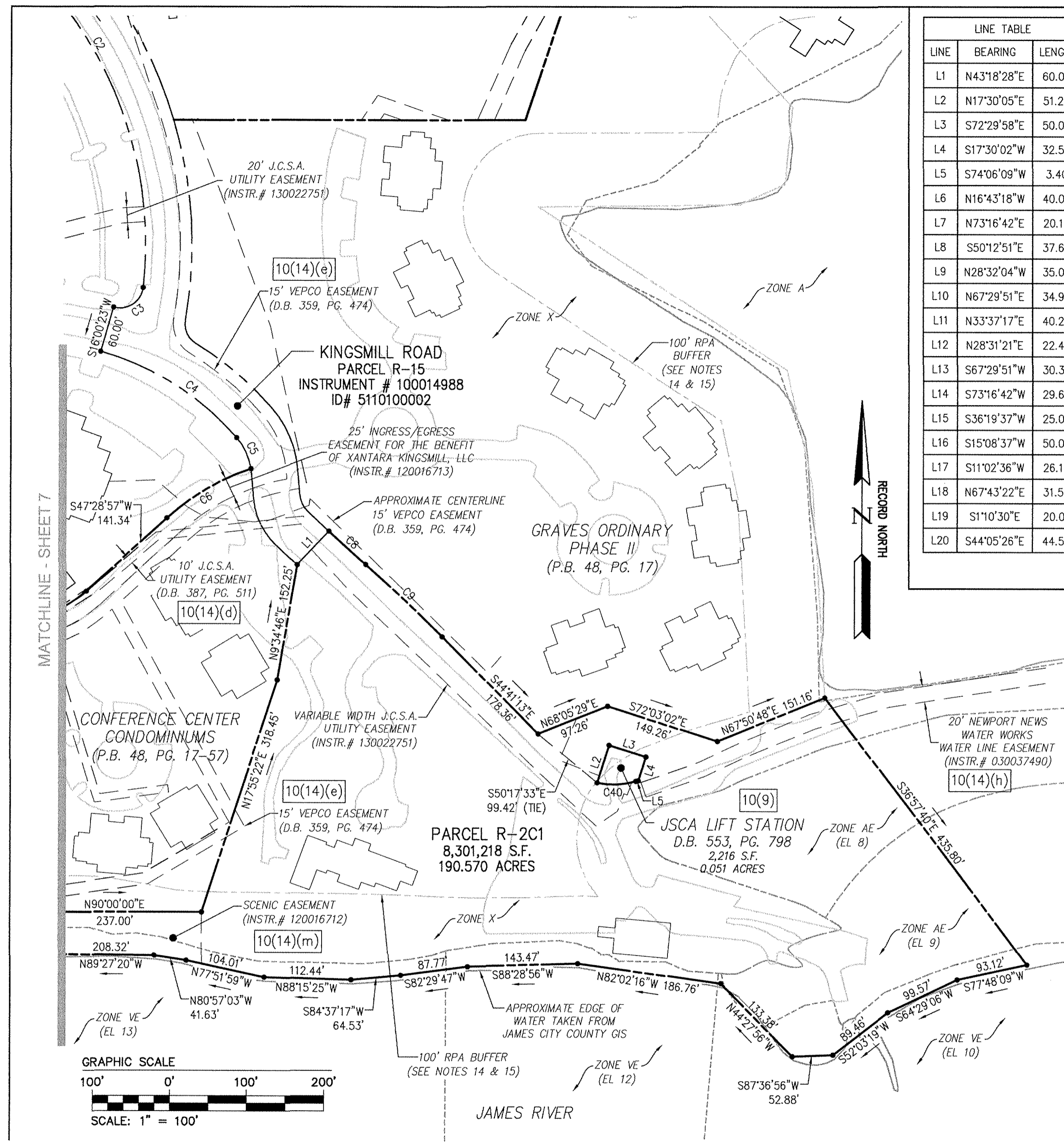


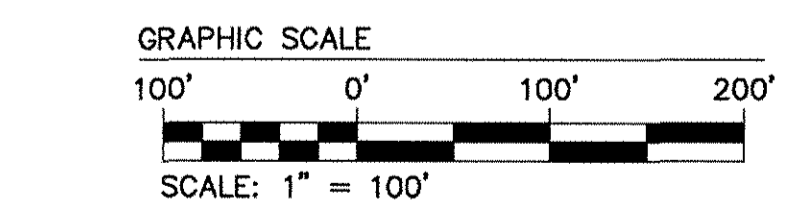
160022664



LINE TABLE			LINE TABLE		
LINE	BEARING	LENGTH	LINE	BEARING	LENGTH
L1	N43°18'28"E	60.00'	L21	N78°16'30"E	54.13'
L2	N17°30'05"E	51.22'	L22	N12°12'02"E	37.86'
L3	S72°29'58"E	50.00'	L23	S47°46'27"E	5.00'
L4	S17°30'02"W	32.55'	L24	S34°09'35"W	53.50'
L5	S74°06'09"W	3.40'	L25	S71°01'07"E	50.00'
L6	N16°43'18"W	40.00'	L26	S36°20'57"E	14.76'
L7	N73°16'42"E	20.15'	L27	N88°44'23"E	39.24'
L8	S50°12'51"E	37.66'	L28	S1°15'37"E	25.92'
L9	N28°32'04"W	35.00'	L29	N88°44'23"E	55.08'
L10	N67°29'51"E	34.90'	L30	S83°10'03"W	13.29'
L11	N33°37'17"E	40.28'	L31	S88°53'58"W	35.69'
L12	N28°31'21"E	22.48'	L32	N80°44'53"W	18.47'
L13	S67°29'51"W	30.34'	L33	N43°43'27"W	24.52'
L14	S73°16'42"W	29.62'	L34	N9°15'07"E	48.54'
L15	S36°19'37"W	25.08'	L35	N47°41'35"E	44.52'
L16	S15°08'37"W	50.00'	L36	N86°08'03"E	24.08'
L17	S11°02'36"W	26.18'	L37	N49°06'47"E	24.61'
L18	N67°43'22"E	31.59'	L38	N86°08'13"E	42.32'
L19	S1°10'30"E	20.01'	L39	N42°20'51"E	35.32'
L20	S44°05'26"E	44.55'	L40	N9°13'42"E	31.05'

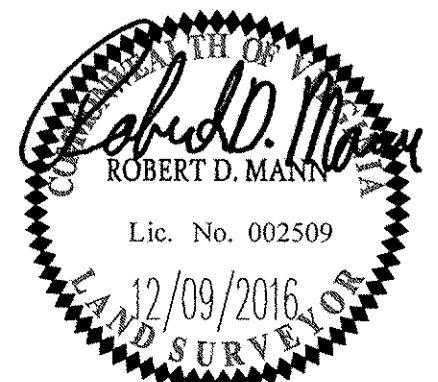
CURVE TABLE						
CURVE #	DELTA	RADIUS	LENGTH	TANGENT	CHORD	CHORD BEARING
C1	108°59'44"	30.00'	57.07'	42.06'	48.85'	N73°30'05"E
C2	58°09'21"	515.00'	522.73'	286.39'	500.58'	S22°55'08"E
C3	99°50'51"	30.00'	52.28'	35.66'	45.91'	S56°04'58"W
C4	32°49'55"	370.00'	212.02'	109.01'	209.13'	S57°34'32"E
C5	32°15'18"	80.30'	45.21'	23.22'	44.61'	S25°01'55"E
C6	23°32'18"	311.00'	127.77'	64.80'	126.87'	S59°29'50"W
C7	110°42'16"	139.00'	268.57'	201.13'	228.70'	N77°10'06"W
C8	1°51'44"	1970.00'	64.03'	32.02'	64.03'	S47°37'24"E
C9	3°52'03"	2030.00'	137.03'	68.54'	137.00'	S46°37'15"E
C10	4°04'49"	725.00'	51.63'	25.83'	51.62'	N36°01'22"E
C11	78°40'07"	175.00'	240.28'	143.41'	221.85'	N5°21'06"W
C12	36°04'05"	300.00'	188.85'	97.67'	185.75'	N26°39'07"W
C13	19°26'31"	247.13'	83.86'	42.34'	83.46'	N82°59'58"E
C14	8°58'42"	300.00'	47.01'	23.55'	46.96'	N68°47'21"E
C15	29°34'42"	125.00'	64.53'	33.00'	63.82'	N79°05'21"E
C16	91°22'48"	125.00'	199.36'	128.05'	178.89'	S40°25'50"E
C17	9°01'53"	175.00'	27.58'	13.82'	27.56'	N3°59'59"W
C18	19°11'44"	162.50'	54.44'	27.48'	54.19'	N43°13'09"E
C19	116°03'33"	83.50'	169.14'	133.78'	141.67'	S88°22'28"E
C20	11°46'11"	140.50'	28.86'	14.48'	28.81'	N44°51'35"W
C21	20°24'06"	232.50'	82.79'	41.84'	82.35'	N40°32'38"W
C22	116°02'08"	108.50'	219.74'	173.76'	184.06'	N88°21'39"W
C23	24°18'27"	137.50'	58.33'	29.61'	57.90'	S45°46'31"W
C24	59°27'21"	175.00'	181.60'	99.93'	173.56'	N56°23'34"W
C25	29°34'40"	175.00'	90.34'	46.20'	89.34'	S79°05'24"W
C26	8°58'38"	250.00'	39.17'	19.63'	39.13'	S68°47'23"W
C27	49°23'05"	400.00'	344.77'	183.91'	334.20'	N32°23'57"W
C28	30°44'39"	265.94'	142.70'	73.11'	140.99'	N41°43'07"W
C29	0°46'41"	525.00'	7.13'	3.57'	7.13'	N26°44'08"W
C30	53°27'35"	200.00'	186.61'	100.72'	179.91'	S49°28'29"E
C31	55°24'59"	275.00'	265.98'	144.43'	255.73'	S50°27'11"E
C32	90°00'00"	145.00'	227.77'	145.00'	205.06'	N56°50'19"E
C33	9°25'00"	425.00'	69.85'	35.00'	69.77'	N16°32'48"E
C34	98°55'49"	30.00'	51.80'	35.08'	45.60'	N70°43'07"E
C35	32°34'35"	750.03'	426.44'	219.16'	420.72'	S76°06'14"E
C36	21°06'07"	763.02'	281.02'	142.12'	279.43'	N78°16'25"E
C37	10°00'00"	1487.00'	259.53'	130.10'	259.20'	S52°46'27"E
C38	2°01'06"	2230.30'	78.56'	39.29'	78.56'	S58°47'00"E
C39	12°03'08"	930.01'	195.63'	98.18'	195.27'	S2°49'05"W
C40	27°35'11"	104.99'	50.55'	25.78'	50.06'	S87°53'43"W
C41	40°21'27"	91.50'	64.45'	33.63'	63.13'	S71°51'51"E
C42	20°31'23"	72.00'	25.79'	13.03'	25.65'	S61°56'58"E
C43	44°01'34"	75.00'	57.63'	30.32'	56.22'	N85°46'28"E
C44	31°17'39"	152.00'	83.02'	42.57'	81.99'	N48°06'46"E

LINE TABLE		
LINE	BEARING	LENGTH
L41	N59°54'40"E	36.23'
L42	N22°01'43"E	23.51'
L43	N59°03'09"E	31.23'
L44	S74°48'06"E	22.93'
L45	N76°15'54"E	20.70'
L46	S50°45'32"E	24.61'
L47	S13°44'06"E	19.51'
L48	S23°17'21"W	18.88'
L49	S50°33'46"E	42.00'
L50	S13°32'20"E	32.81'
L51	N88°06'01"E	41.58'
L52	S42°11'44"E	18.53'
L53	N87°57'26"E	8.62'
L54	S51°41'16"E	20.25'
L55	S72°12'49"E	44.31'
L56	S17°47'11"W	26.92'
L57	S72°12'49"E	21.97'
L58	N32°27'52"E	43.79'



City of Williamsburg & County of James City
 Circuit Court: This PLAT was recorded on
 12-19-2016
 at 3:43 AM/PM PB PG
 Document # 160022664
 MONA A. FOLEY, CLERK
 Clerk

Large/Small Plat(s) Recorded
 herewith as # 160022664



JCC Subdivision Agent
 Approval Not Required

816 Greenbrier Circle, Suite F
 Chesapeake, Virginia 23320
 Phone: (757) 410-7436
 www.aesva.com

Hampton Roads | Central Virginia | Middle Peninsula

PLAT OF BOUNDARY
 PARCEL R-2C1
 KINGSMILL RESORT
 PROPERTY OF
XANTERRA KINGSMILL, LLC
 ROBERTS DISTRICT COUNTY OF JAMES CITY VIRGINIA

Project Contacts: RDM
 Project Number: 7753-46
 Scale: 1"=100' Date: 12/09/2016
 Sheet Number
8

Rev.	Date	Description	Revised By