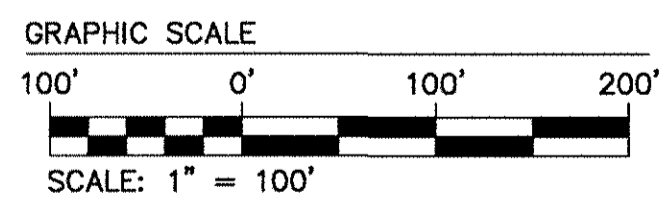
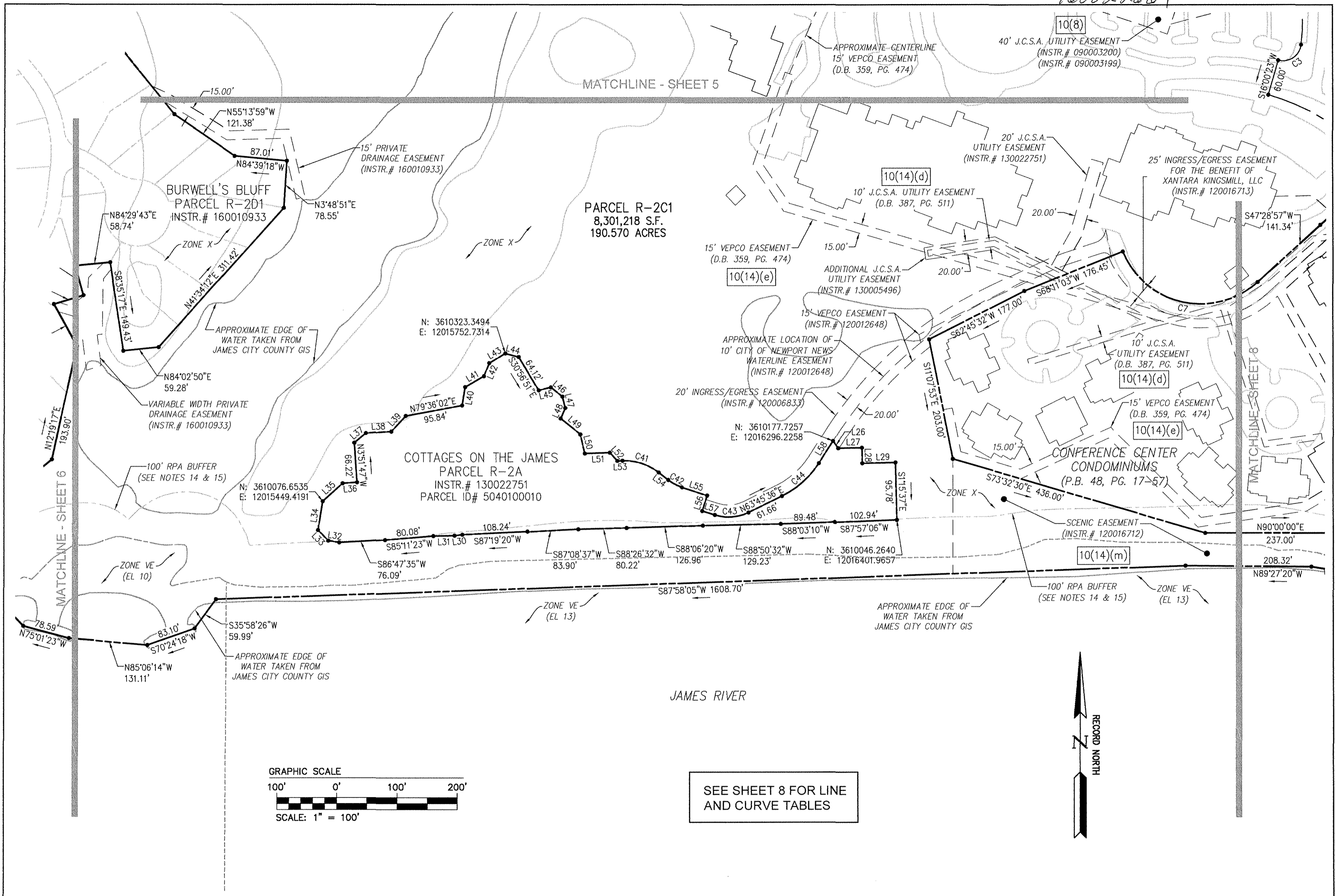


160022664



SEE SHEET 8 FOR LINE AND CURVE TABLES



City of Williamsburg & County of James City  
 Circuit Court: This PLAT was recorded on 12-19-2016  
 at 3:43 AM/PM/PB PG 1  
 Document # 160022664  
 MONA A. FOLEY, CLERK  
Mona A. Foley, Clerk

8 Large Small Plat(s) Recorded  
 herewith as # 160022664

Rev.	Date	Description	Revised By



JCC Subdivision Agent *ec*  
 Approval Not Required

**AES**  
 CONSULTING ENGINEERS

816 Greenbrier Circle, Suite F  
 Chesapeake, Virginia 23320  
 Phone: (757) 410-7436  
 www.aesva.com

Hampton Roads | Central Virginia | Middle Peninsula

PLAT OF BOUNDARY  
 PARCEL R-2C1  
 KINGSMILL RESORT  
 PROPERTY OF  
**XANTERRA KINGSMILL, LLC**  
 ROBERTS DISTRICT COUNTY OF JAMES CITY VIRGINIA

Project Contacts:	RDM
Project Number:	7753-46
Scale:	Date:
1"=100'	12/09/2016
Sheet Number	<b>7</b>