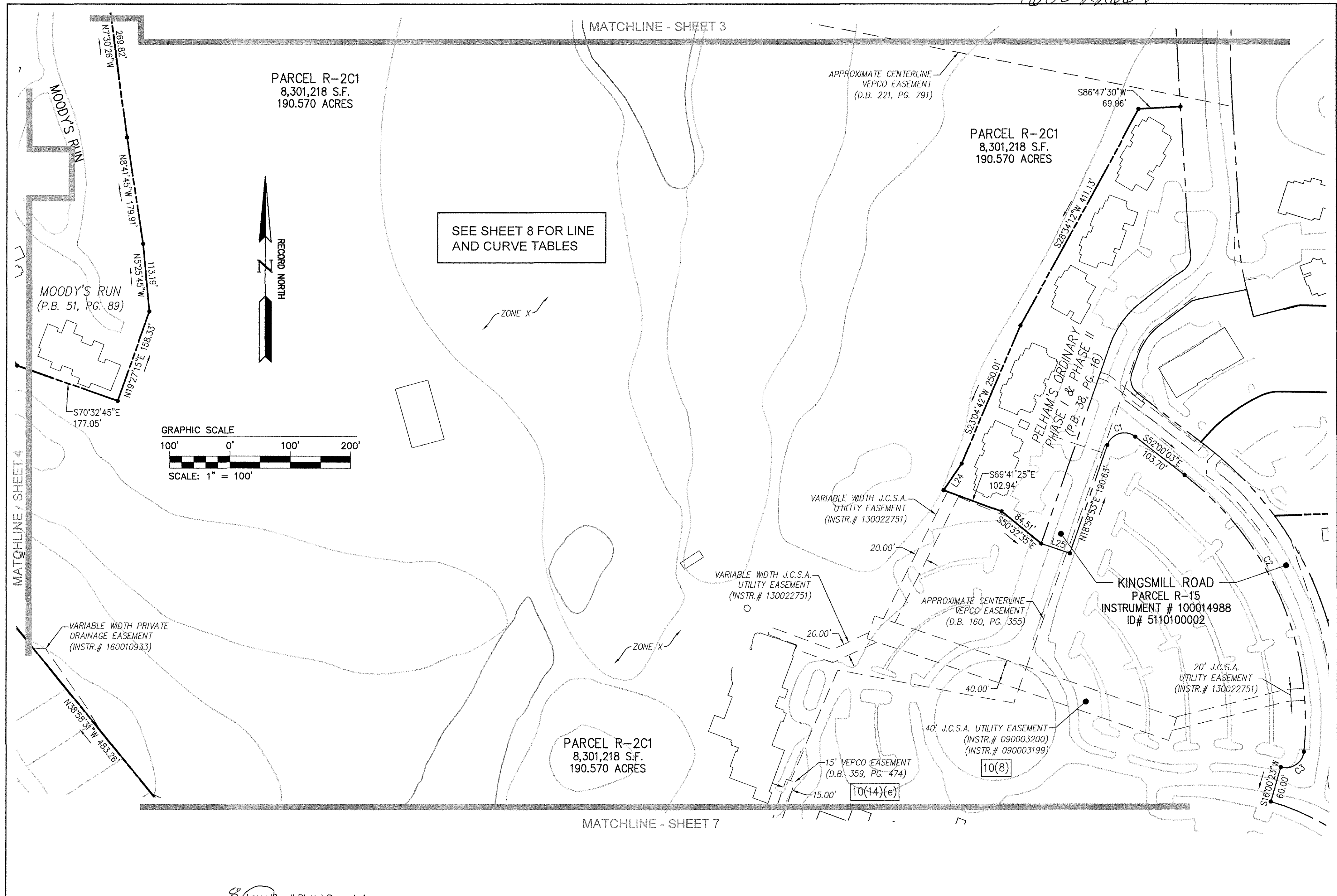
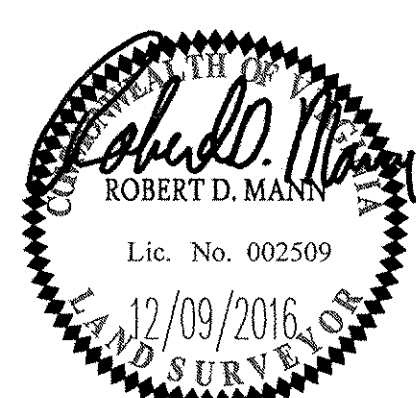


160022664



City of Williamsburg & County of James City  
Circuit Court: This PLAT was recorded on  
at 3:43 AM PM, PG 12-14-2016  
Document # 160022664  
MONA A. FOLEY, CLERK  
Mona A. Foley, Clerk

Rev.	Date	Description	Revised By



JCC Subdivision Agent  
Approval Not Required

**AES**  
CONSULTING ENGINEERS  
Hampton Roads | Central Virginia | Middle Peninsula

816 Greenbrier Circle, Suite F  
Chesapeake, Virginia 23320  
Phone: (757) 410-7436  
www.aesva.com

PLAT OF BOUNDARY  
PARCEL R-2C1  
KINGSMILL RESORT  
PROPERTY OF  
**XANTERRA KINGSMILL, LLC**  
ROBERTS DISTRICT    COUNTY OF JAMES CITY    VIRGINIA

Project Contacts: RDM	
Project Number: 7753-46	
Scale: 1"=100'	Date: 12/09/2016
Sheet Number	
<b>5</b>	