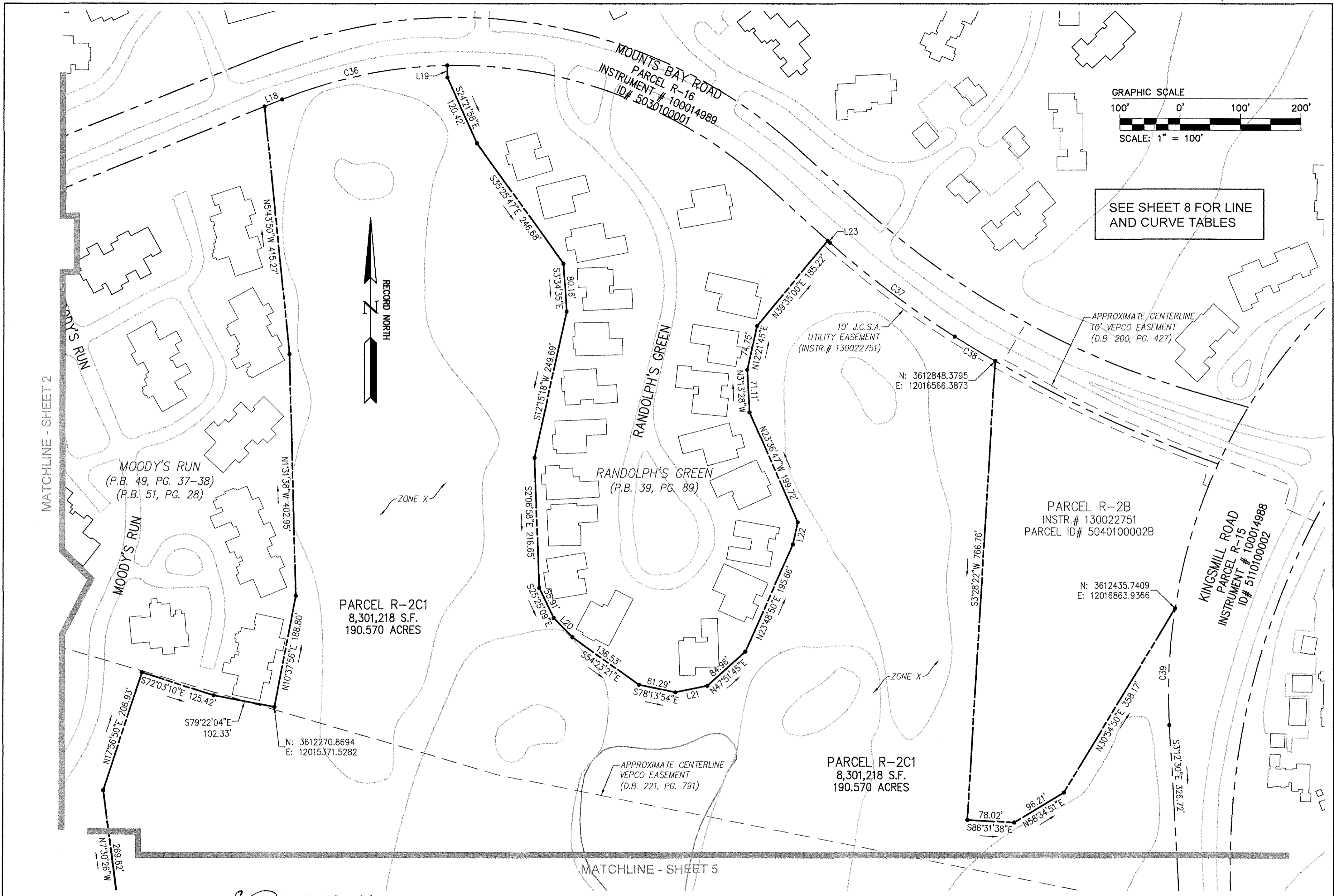


160022664



GRAPHIC SCALE
 100' 0' 100' 200'
 SCALE: 1" = 100'
 SEE SHEET 8 FOR LINE AND CURVE TABLES

City of Williamsburg & County of James City
 Circuit Court: This PLAT was recorded on
 12-19-2016
 at 3:43 AM PM PB PG
 Document # 160022664
 MONA A. FOLEY, CLERK
 Clerk

9 Large/Small Plat(s) Recorded
 herewith as # 160022664

Rev.	Date	Description	Revised By



JCC Subdivision Agent
 Approval Not Required

AES
 CONSULTING ENGINEERS

816 Greenbrier Circle, Suite F
 Chesapeake, Virginia 23320
 Phone: (757) 410-7436
 www.aesva.com

Hampton Roads | Central Virginia | Middle Peninsula

PLAT OF BOUNDARY
 PARCEL R-2C1
 KINGSMILL RESORT
 PROPERTY OF
XANTERRA KINGSMILL, LLC
 ROBERTS DISTRICT COUNTY OF JAMES CITY VIRGINIA

Project Contacts: RDM
 Project Number: 7753-46
 Scale: 1"=100' Date: 12/09/2016
 Sheet Number
3