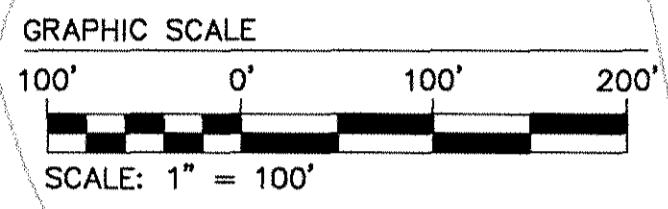
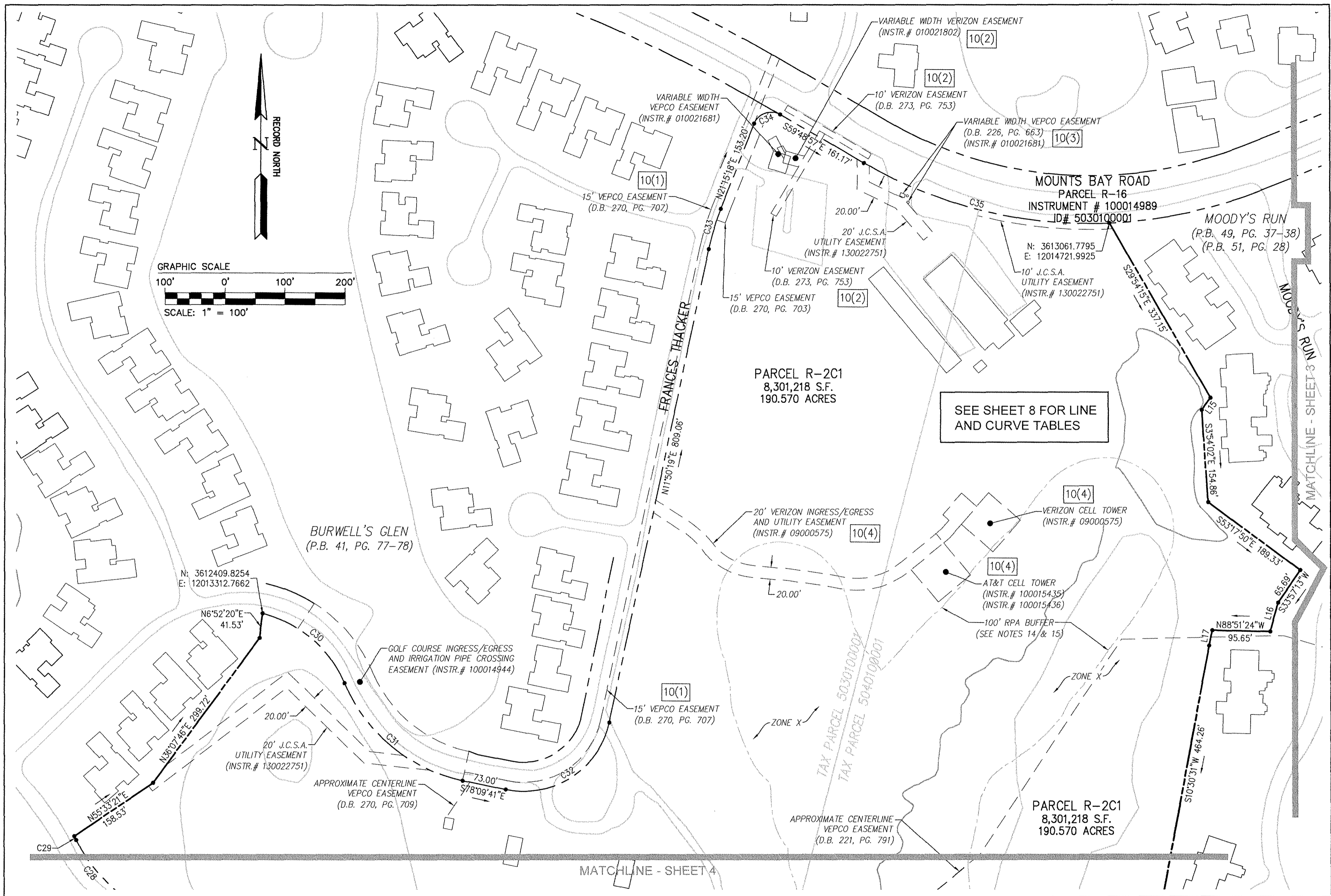


160022664



SEE SHEET 8 FOR LINE AND CURVE TABLES

City of Williamsburg & County of James City  
Circuit Court: This PLAT was recorded on 12-19-2016  
at 3:43 AM/PM, PG 16  
Document # 160022664  
MONA A. FOLEY, CLERK  
Mona A. Foley, Clerk

8 Large/Small Plat(s) Recorded  
herewith as # 160022664

Rev.	Date	Description	Revised By



JCC Subdivision Agent Approval Not Required

AES  
CONSULTING ENGINEERS  
Hampton Roads | Central Virginia | Middle Peninsula

816 Greenbrier Circle, Suite F  
Chesapeake, Virginia 23320  
Phone: (757) 410-7436  
www.aesva.com

PLAT OF BOUNDARY  
PARCEL R-2C1  
KINGSMILL RESORT  
PROPERTY OF  
**XANTERRA KINGSMILL, LLC**  
ROBERTS DISTRICT    COUNTY OF JAMES CITY    VIRGINIA

Project Contacts:	RDM
Project Number:	7753-46
Scale:	Date:
1"=100'	12/09/2016
Sheet Number	
<b>2</b>	