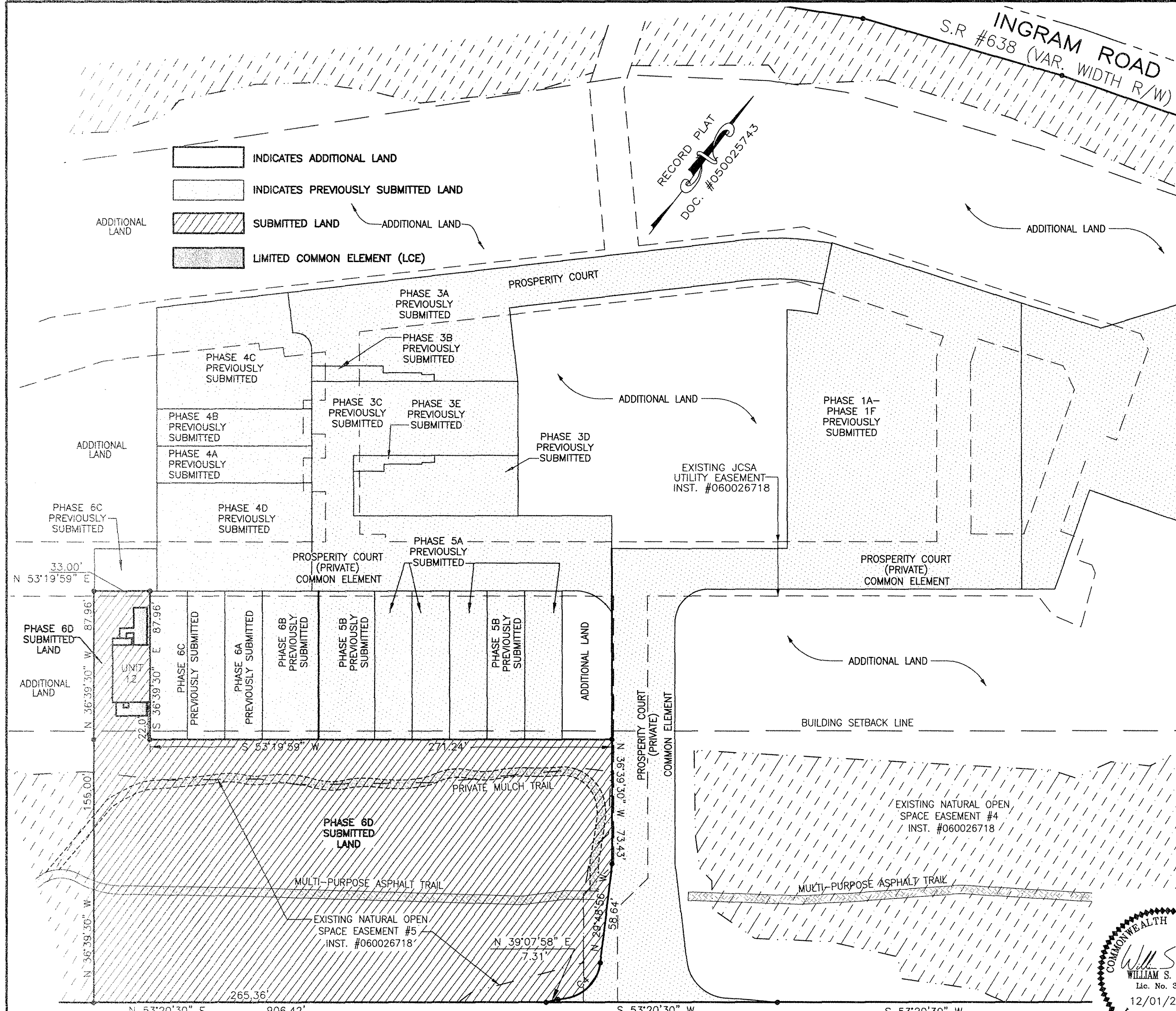
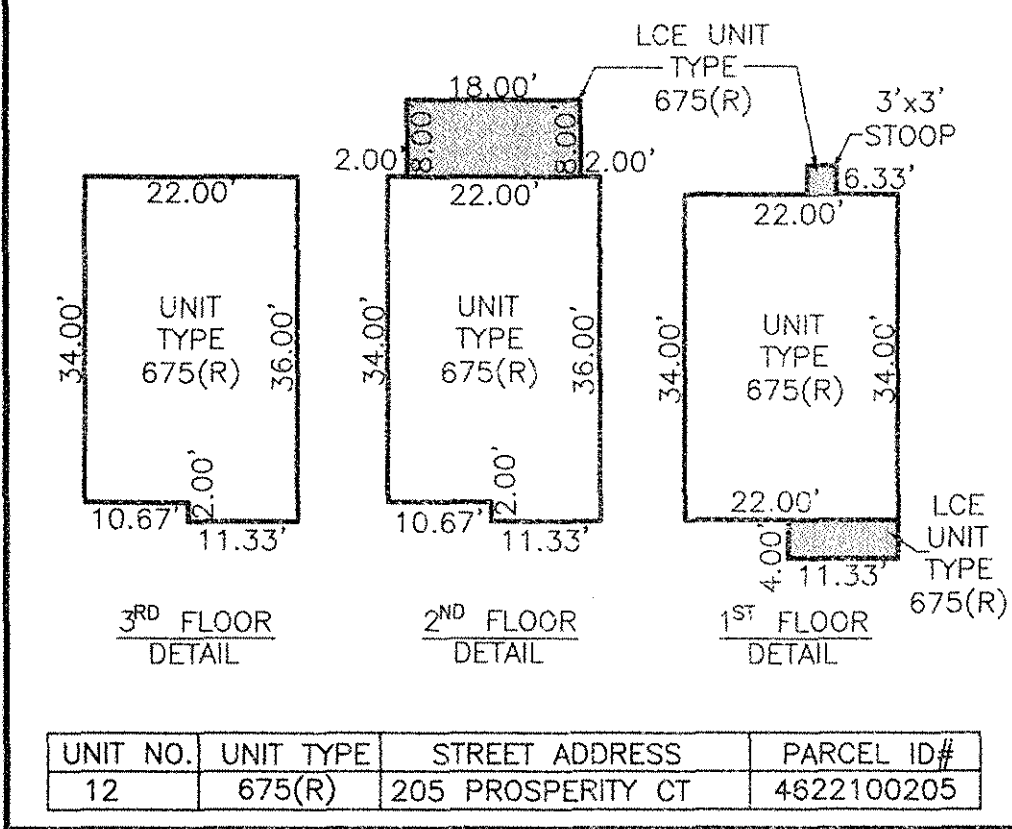


160021929



- INDICATES ADDITIONAL LAND
- INDICATES PREVIOUSLY SUBMITTED LAND
- SUBMITTED LAND
- LIMITED COMMON ELEMENT (LCE)



SURVEYORS CERTIFICATE

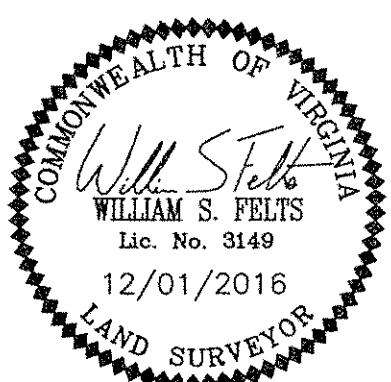
I HEREBY CERTIFY THAT THE PLAN PREVIOUSLY RECORDED FOR GOVERNOR'S GROVE AT FIVE FORKS, A CONDOMINIUM AT INSTRUMENT NO. 160009184 ACCURATELY DEPICT THE UNITS AND RELATED IMPROVEMENTS SHOWN AND THAT THEY COMPLY WITH THE CODE OF VIRGINIA OF 1950, AS AMENDED 55-79.58(B) AND ARE SUBSTANTIALLY COMPLETE.

I HEREBY CERTIFY THAT THIS PLAT IS ACCURATE AND COMPLIES WITH THE PROVISIONS OF SECTION 55-79.58 (A) OF THE CODE OF VIRGINIA 1950 AS AMENDED.

William S. Felts 12/01/16
 WILLIAM S. FELTS LIC. #3149 DATE

JCC Subdivision Agent Approval Not Required
PLAT OF PHASE 6D GOVERNOR'S GROVE AT FIVE FORKS A CONDOMINIUM
 LOCATED IN THE BERKELEY DISTRICT JAMES CITY COUNTY, VIRGINIA

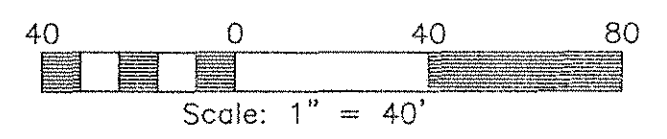
SCALE: 1" = 40'
 DATE: 12/01/2016 SHEET: 2 OF 2 JOB# 06-460



City of Williamsburg & County of James City
 Circuit Court: This PLAT was recorded on
DECEMBER 7, 2016
 at 3:23 AM PM, PB PG
 Document # 160021929
 MONA A. FOLEY, CLERK
Monica Foley Clerk

JOHN TYLER HIGHWAY STATE ROUTE #5
 (VARIABLE WIDTH PUBLIC R/W)

| CURVE TABLE | | | | | |
|-------------|--------|--------|--------|---------------|-----------|
| CURVE | RADIUS | LENGTH | CHORD | CHORD BEARING | DELTA |
| C4 | 24.50' | 36.06' | 32.89' | N 12°20'41" E | 84°19'13" |



2 Large/Small Plat(s) Recorded
 refer to as # 160021929