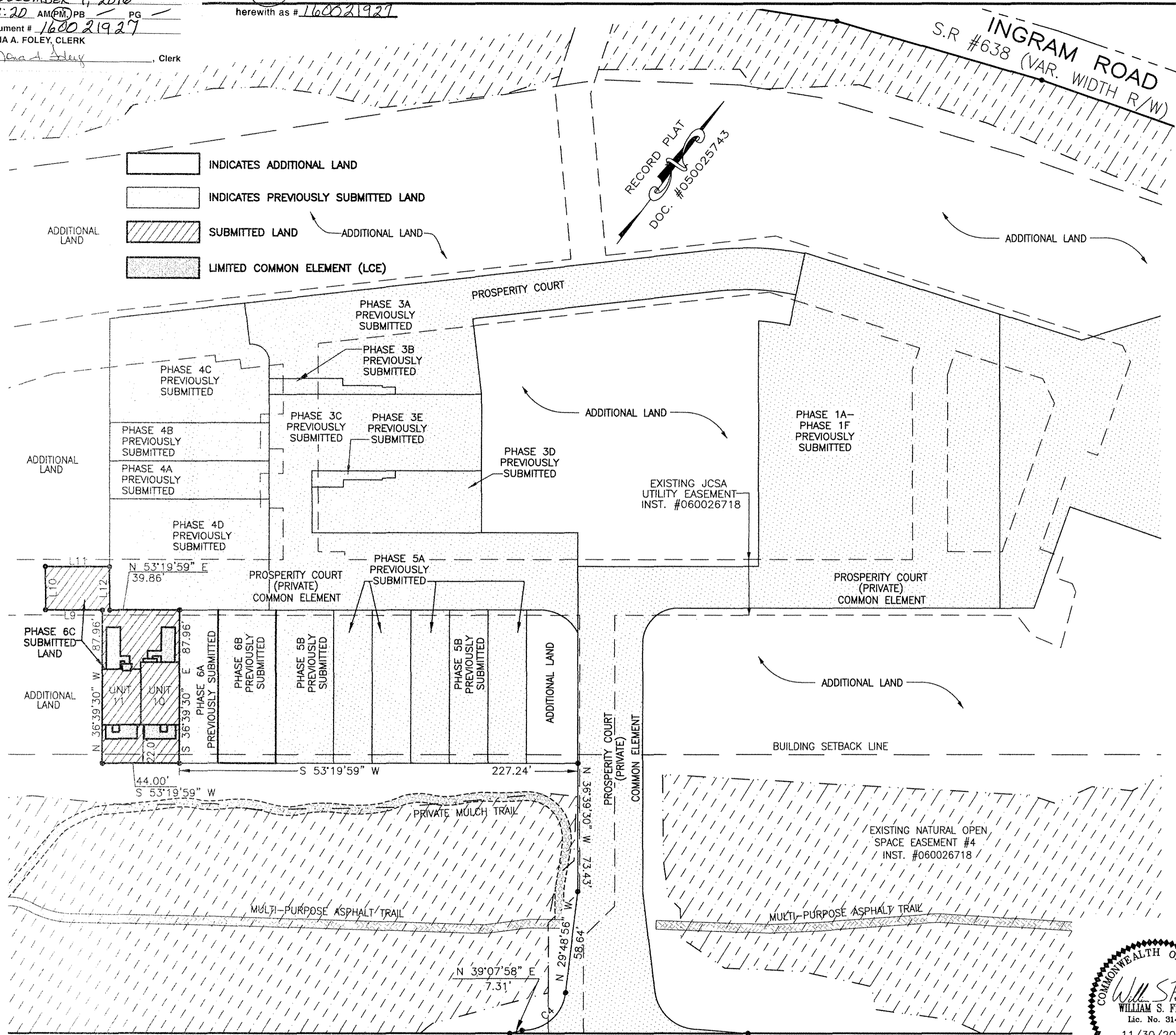
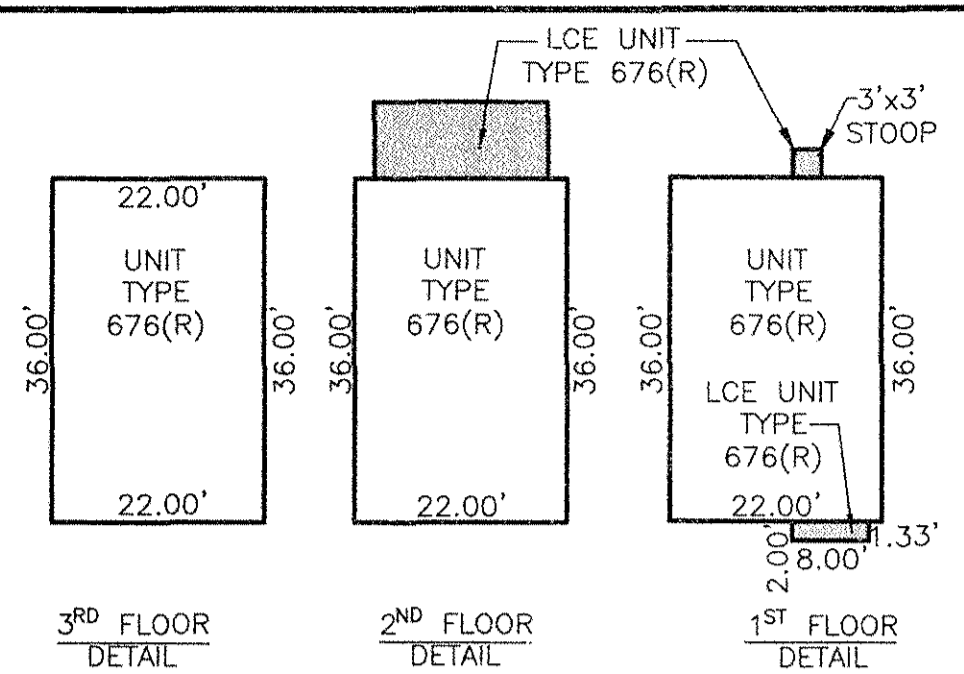


160021927

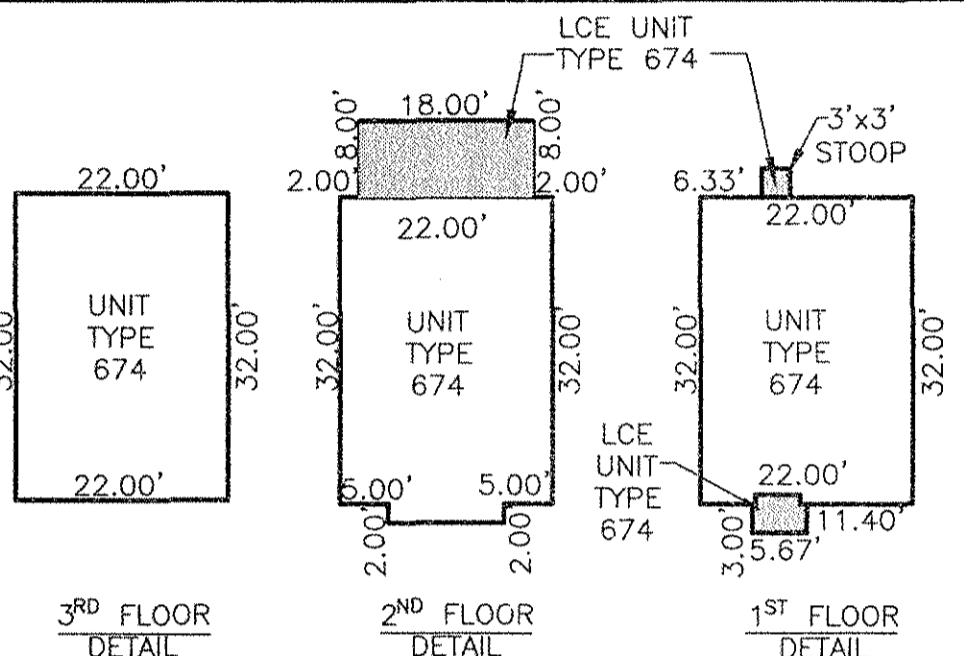
Monica Foley, Clerk



- INDICATES ADDITIONAL LAND
- INDICATES PREVIOUSLY SUBMITTED LAND
- SUBMITTED LAND
- LIMITED COMMON ELEMENT (LCE)



UNIT NO.	UNIT TYPE	STREET ADDRESS	PARCEL ID#
10	676(R)	203 PROSPERITY CT	4622100203



UNIT NO.	UNIT TYPE	STREET ADDRESS	PARCEL ID#
11	674	204 PROSPERITY CT	4622100204

SURVEYORS CERTIFICATE

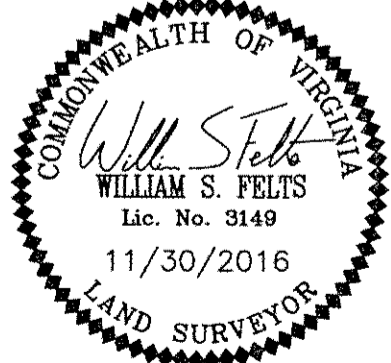
I HEREBY CERTIFY THAT THE PLAN PREVIOUSLY RECORDED FOR GOVERNOR'S GROVE AT FIVE FORKS, A CONDOMINIUM AT INSTRUMENT NO. 160009184 ACCURATELY DEPICT THE UNITS AND RELATED IMPROVEMENTS SHOWN AND THAT THEY COMPLY WITH THE CODE OF VIRGINIA OF 1950, AS AMENDED 55-79.58(B) AND ARE SUBSTANTIALLY COMPLETE.

I HEREBY CERTIFY THAT THIS PLAT IS ACCURATE AND COMPLIES WITH THE PROVISIONS OF SECTION 55-79.58 (A) OF THE CODE OF VIRGINIA 1950 AS AMENDED.

William S. Felts 11/30/16
 WILLIAM S. FELTS LIC. #3149 DATE

JCC Subdivision Agent Approval Not Required
 PLAT OF
PHASE 6C
GOVERNOR'S GROVE AT FIVE FORKS
 A CONDOMINIUM
 LOCATED IN THE BERKELEY DISTRICT
 JAMES CITY COUNTY, VIRGINIA

SCALE: 1" = 40'
 DATE: 11/30/2016 SHEET: 2 OF 2 JOB# 06-460



LandTech Resources, Inc.
 Engineering & Surveying Consultants

3925 Midlands Road, Williamsburg, VA 23188
 Phone: (757) 565-1677 Fax: (757) 565-0782
 web: landtechresources.com

NO.	DIRECTION	DISTANCE
L9	S 53°19'59" W	32.55'
L10	S 36°39'30" E	25.00'
L11	S 53°19'59" W	36.70'
L12	S 36°39'30" E	25.00'

JOHN TYLER HIGHWAY
STATE ROUTE #5
 (VARIABLE WIDTH PUBLIC R/W)

CURVE	RADIUS	LENGTH	CHORD	CHORD BEARING	DELTA
C4	24.50'	36.06'	32.89'	N 12°20'41" E	84°19'13"