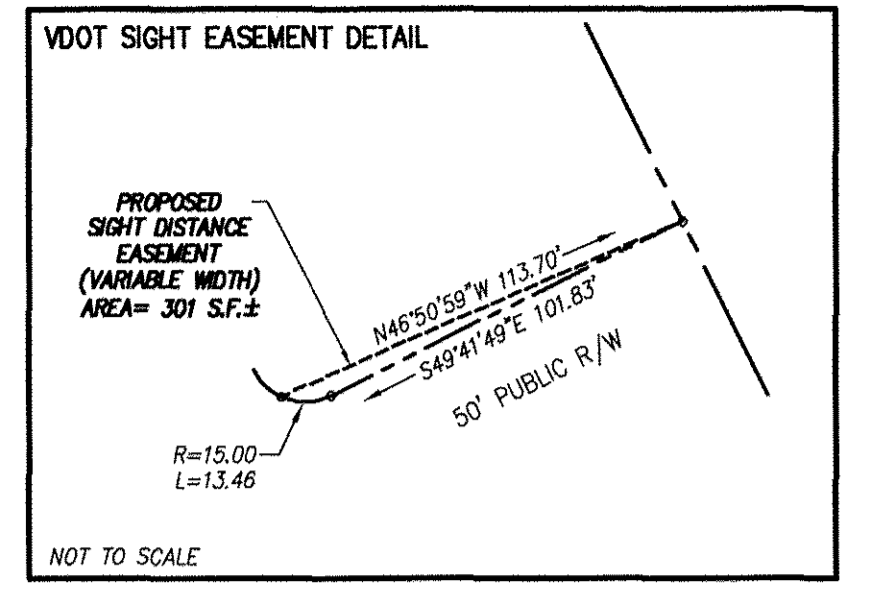
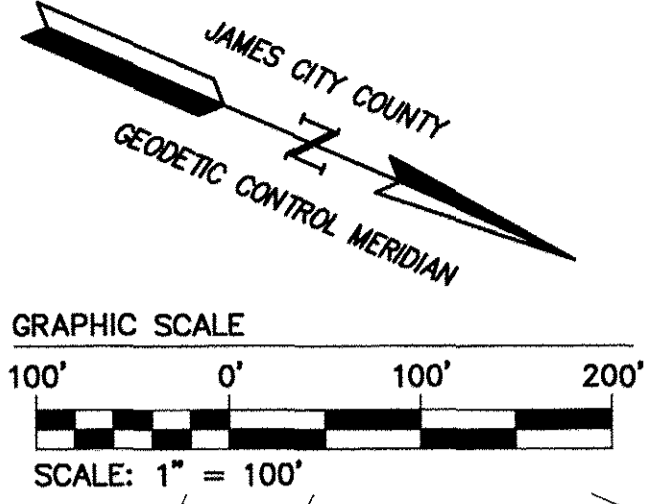
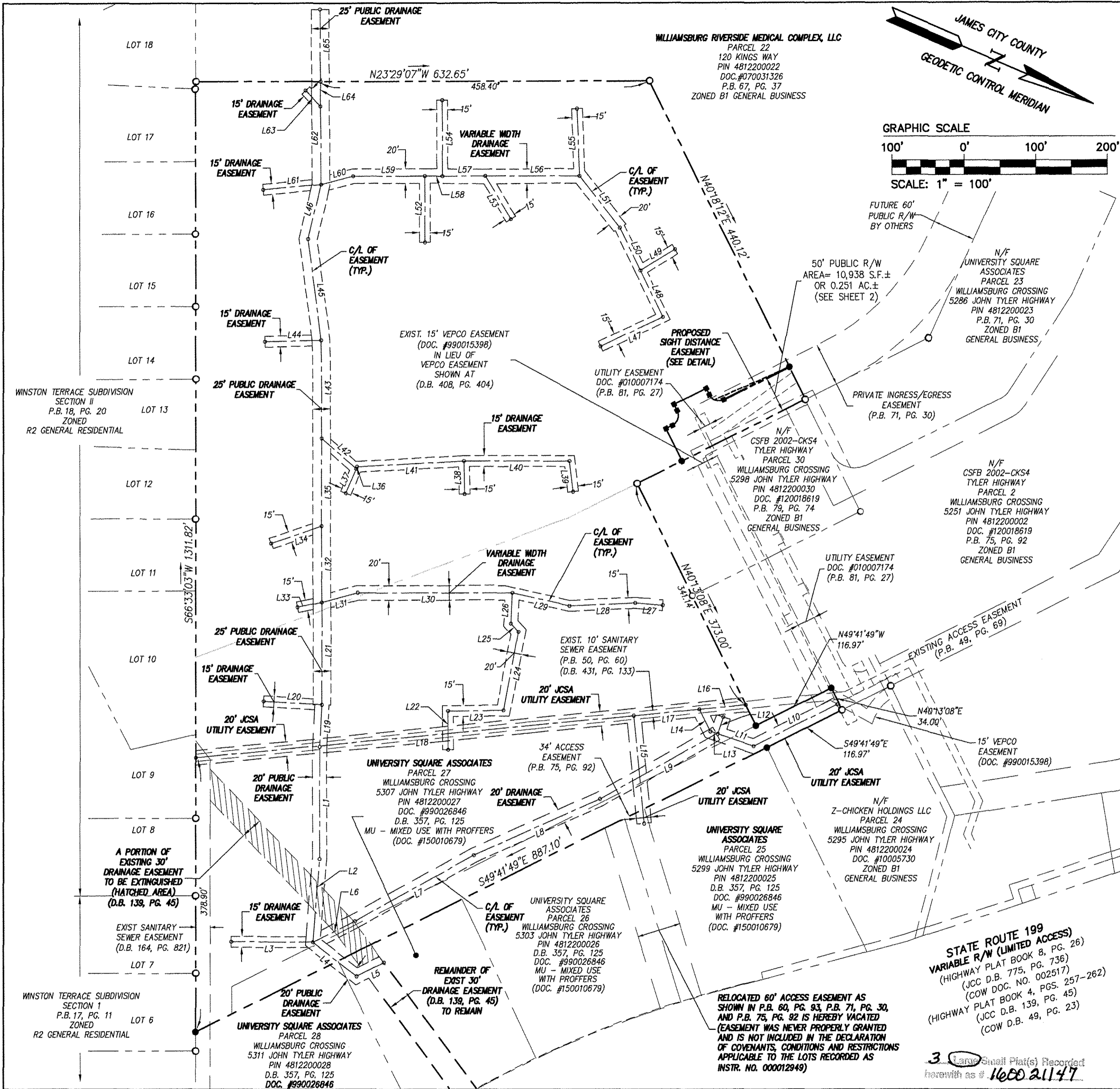


160021147

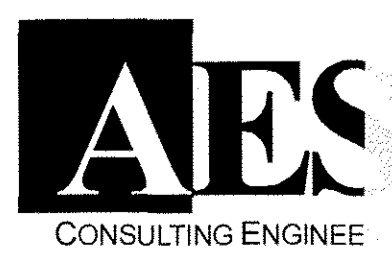
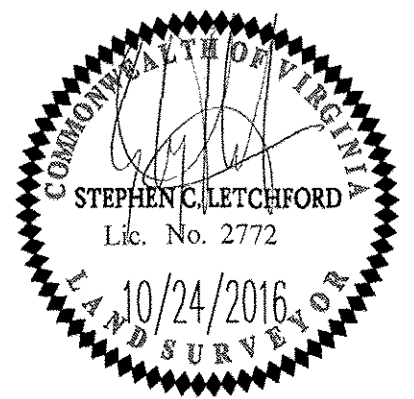


LINE	BEARING	LENGTH
L1	N66°33'03"E	155.00'
L2	N71°09'34"E	115.59'
L3	N23°07'10"W	113.80'
L4	N13°55'35"E	77.36'
L5	N49°43'59"W	42.84'
L6	N49°43'59"W	66.18'
L7	N52°19'13"W	188.29'
L8	N47°12'17"W	192.69'
L9	N52°30'56"W	185.09'
L10	N49°41'49"W	129.87'
L11	N4°41'13"W	52.41'
L12	S85°16'37"W	24.58'
L13	N4°41'13"W	10.83'
L14	N40°16'01"E	34.08'
L15	N61°07'16"E	149.50'
L16	N28°50'58"W	64.46'
L17	N28°50'58"W	91.98'
L18	N28°50'58"W	613.39'
L19	N70°11'55"E	57.68'
L20	S19°44'08"E	82.03'
L21	N66°26'42"E	141.62'
L22	N66°32'50"E	53.54'
L23	S23°43'06"E	76.86'
L24	N77°33'34"E	110.70'
L25	N23°13'00"E	15.71'
L26	N69°38'43"E	42.84'
L27	N18°28'15"W	38.31'
L28	N26°02'01"W	91.54'
L29	N10°39'29"W	81.90'
L30	N23°26'25"W	214.75'
L31	N38°05'03"W	52.38'
L32	N66°26'42"E	104.93'
L33	S34°29'13"E	35.00'
L34	S41°57'01"E	74.39'
L35	N66°26'42"E	121.54'

LINE	BEARING	LENGTH
L36	N89°40'36"W	2.96'
L37	S89°40'36"E	36.74'
L38	N65°52'01"E	45.46'
L39	N59°52'59"E	42.46'
L40	N23°27'10"W	147.31'
L41	N26°26'59"W	148.60'
L42	N17°15'35"E	64.52'
L43	N66°26'42"E	134.80'
L44	S24°34'30"E	78.49'
L45	N58°59'20"E	141.12'
L46	N80°17'28"E	77.89'
L47	S48°26'25"E	95.34'
L48	N40°42'32"E	71.61'
L49	N54°23'51"W	56.11'
L50	N40°42'32"E	65.22'
L51	N28°34'53"E	91.14'
L52	N66°30'08"E	91.63'
L53	N35°33'38"E	69.43'
L54	S66°30'08"W	104.23'
L55	S64°30'04"W	92.70'
L56	N23°29'52"W	131.69'
L57	N23°29'52"W	59.30'
L58	N23°29'52"W	24.34'
L59	N23°29'52"W	99.61'
L60	N37°28'47"W	46.53'
L61	N28°28'34"W	81.45'
L62	N66°11'58"E	107.75'
L63	S22°32'47"W	29.92'
L64	N66°11'58"E	34.15'
L65	N66°11'58"E	99.46'

NOTE: THIS SHEET IS FOR EASEMENT PURPOSES ONLY

Rev.	Date	Description	Revised by
4	10-31-16	REVISED SOURCE OF TITLE AND PLAT TITLE BLOCK	JFS
3	10-24-16	REVISED PER VDOT COMMENT	RSB
2	2-05-16	REVISED TO ADD VDOT SIGNATURE BLOCK AND ADDED GENERAL NOTE #16	JFS
1	1-29-16	REVISED PER COUNTY COMMENTS DATED 10-28-15	JFS



City of Williamsburg & County of James City
 Circuit Court: This PLAT was recorded on
NOVEMBER 22, 2016
 at 2:04 AM (PM) PB PG
 Document # **160021147**
 MONA A. FOLEY, CLERK

PLAT OF LOT LINE EXTINGUISHMENT
 BEING PARCELS 20 AND 29 OF
 WILLIAMSBURG CROSSING
 OWNED BY FRANCISCUS AT PROMENADE LLC

Project Contacts:	SCL/JFS
Project Number:	8642-19
Scale:	NOTED
Date:	9-09-15
Sheet Number	3 OF 3