

160017400

150008767

CURVE TABLE						
LOT	DELTA	RADIUS	LENGTH	TANGENT	CHORD	CHORD BEARING
CA4 A	21°49'47"	309.00'	117.73'	59.59'	117.02'	N54°50'35"W
77 A	3°21'47"	309.00'	18.14'	9.07'	18.14'	N67°26'22"W
77 B	43°28'39"	191.00'	144.94'	76.16'	141.49'	N47°22'56"W
78	57°44'51"	191.00'	192.51'	105.33'	184.46'	N03°13'48"E
CA4 B	4°51'59"	191.00'	16.22'	8.12'	16.22'	N34°32'13"E
CA4 C	33°34'41"	50.00'	29.30'	15.09'	28.88'	N53°45'33"E
79 A	7°49'55"	50.00'	6.83'	3.42'	6.83'	N74°27'51"E
79 B	67°44'40"	50.00'	59.12'	33.56'	55.73'	N44°30'29"E
80	28°57'18"	50.00'	25.27'	12.91'	25.00'	N03°50'30"W
81	60°00'13"	50.00'	52.36'	28.87'	50.00'	N48°19'16"W
82	28°57'18"	50.00'	25.27'	12.91'	25.00'	S87°11'59"W
83	77°09'41"	50.00'	67.34'	39.89'	62.36'	S34°08'29"W
85	12°16'06"	241.00'	51.61'	25.90'	51.51'	S30°50'10"W
86	20°48'08"	241.00'	87.50'	44.24'	87.02'	S14°18'03"W
87	22°30'34"	241.00'	94.68'	47.96'	94.07'	S07°21'18"E
CA4 D	11°36'23"	241.00'	48.82'	24.49'	48.74'	S24°24'47"E
88	21°08'46"	241.00'	88.95'	44.99'	88.44'	S40°47'21"E
89	12°28'04"	241.00'	52.44'	26.33'	52.34'	S57°35'46"E
90 A	5°17'28"	241.00'	22.26'	11.14'	22.25'	S66°28'32"E
90 B	6°04'56"	259.00'	27.49'	13.76'	27.48'	S66°04'48"E
CA4 E	19°06'38"	259.00'	86.39'	43.60'	85.99'	S53°29'01"E

RIGHT OF WAY CURVE TABLE						
CURVE	DELTA	RADIUS	LENGTH	TANGENT	CHORD	CHORD BEARING
C8	25°11'34"	309.00'	135.87'	69.05'	134.78'	N56°31'29"W
C9	106°05'29"	191.00'	353.67'	253.89'	305.27'	N16°04'31"W
C10	41°24'36"	50.00'	36.13'	18.90'	35.36'	N57°40'31"E
C11	26°49'10"	50.00'	229.36'	75.00'	N53°01'47"W	
C12	41°24'36"	50.00'	36.14'	18.90'	35.36'	S16°15'56"W
C13	106°05'29"	241.00'	446.26'	320.36'	385.18'	S16°04'31"E
C14	25°11'34"	259.00'	113.88'	57.88'	112.97'	S56°31'29"E

EASEMENT LINE TABLE		
LINE	BEARING	LENGTH
L1	S27°46'33"W	56.48'
L2	S04°27'08"E	125.77'
L3	S51°38'28"E	157.93'

INDICATES AREA OF NATURAL OPEN SPACE TO REMAIN UNDISTURBED AND TO BE DEDICATED TO JAMES CITY COUNTY.

INDICATES AREA OF PRIVATE NATURAL OPEN SPACE TO REMAIN UNDISTURBED AND TO BE DEDICATED BY EASEMENT TO JAMES CITY COUNTY.

NOTE: FLOORS 72-80 SHALL MAINTAIN A MINIMUM FINISH FLOOR ABOVE 57 FT MSL (UNLESS OTHERWISE NOTED) TO AVOID FLOOD HAZARD DURING A DAM BREAK FROM THE UPSTREAM FACILITY

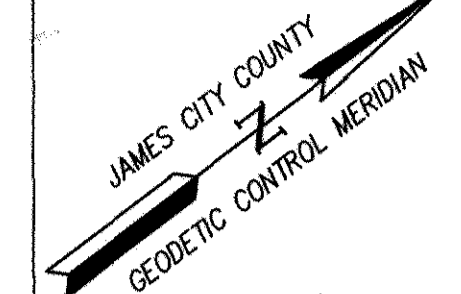
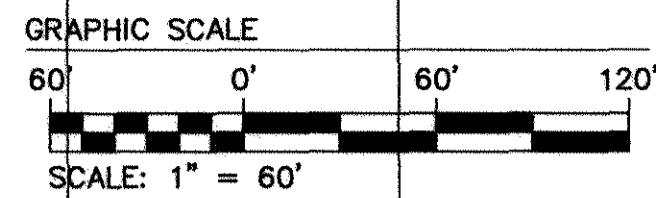
NOTE: CONSERVATION EASEMENT SIGNS TO BE INSTALLED AT THE INTERSECTION OF PROPERTY LINES AND EASEMENT AND AS SHOWN.

NOTE: 15' SEPARATION FROM 100' RPA BUFFER FOR INITIAL PRINCIPAL RESIDENTIAL DWELLING CONSTRUCTION (TYP.) LOT AREAS INCLUDE AREA OF PRIVATE NATURAL OPEN SPACE.

CA1 - COMMON AREA 1

N/F ELIZABETH O. BUSH  
D.B. 702, PG. 627  
D.B. 697, PG. 970 (PLAT)  
TP#(47-2)(1-54)

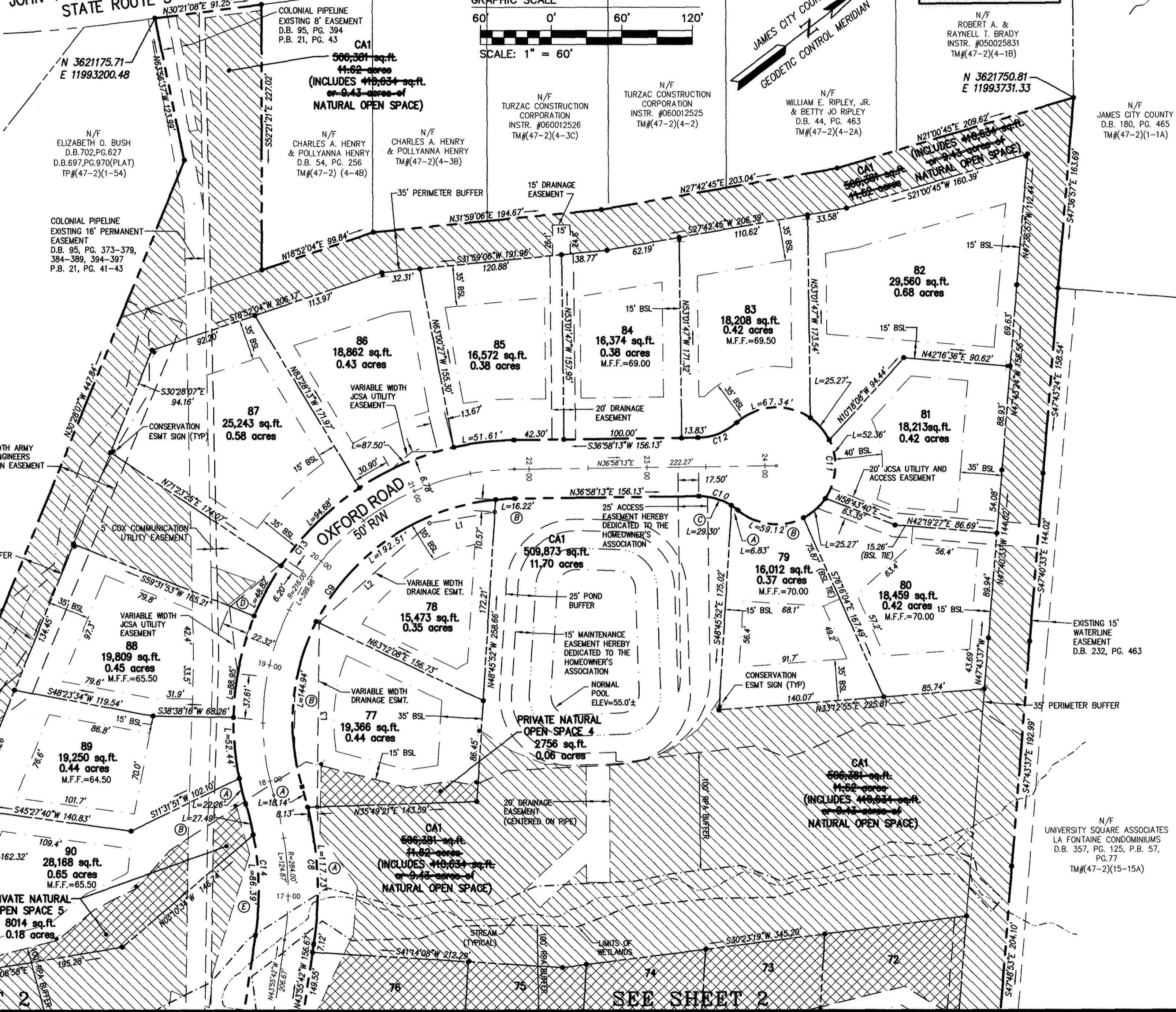
JOHN TYLER MEMORIAL HIGHWAY  
STATE ROUTE 5



SEE SHEET 1 FOR CA1 AREA AND NATURAL OPEN SPACE INCLUDED IN CA1.

N/F ROBERT A. & RAYNELL T. BRADY  
INSTR. #050025831  
TM#(47-2)(4-1B)

N/F JAMES CITY COUNTY  
D.B. 180, PG. 465  
TM#(47-2)(1-1A)



City of Williamsburg & County of James City  
Circuit Court: This PLAT was recorded on  
10-3-2016  
at 8:45 AM PM, PG  
Document # 160017400  
MONA A. FOLEY, CLERK  
Mona Foley, Clerk

**CONSULTING ENGINEERS**  
WILLIAMSBURG • RICHMOND • GLOUCESTER

City of Williamsburg & County of James City  
Circuit Court: This PLAT was recorded on  
May 11, 2015  
at 3:26 PM PM, PG  
Document # 150008767  
BETSY B. WOOLRIDGE, CLERK  
Betsy Woolridge, Dep. Clerk

3 Large Small Plat(s) Recorded  
herewith as # 150008767

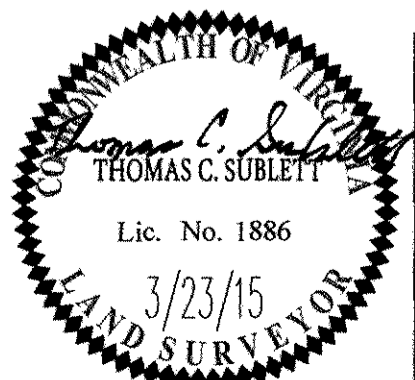
**PLAT OF CORRECTION**

**PLAT OF SUBDIVISION**

**MARYWOOD**

PHASE II  
LOTS 64-90  
PREPARED FOR CENTEX HOMES

JAMESTOWN DISTRICT    JAMES CITY COUNTY    VIRGINIA



No.	DATE	REVISION / COMMENT / NOTE	REVISED BY	REVIEWED BY
5	9/15/16	PLAT OF CORRECTION	JFS	
4	3/23/15	REVIEWED PLAT AND UPDATED NOTES	JAG	
3	8/26/14	REVIEWED PLAT AND UPDATED NOTES	JFS	
2	4/3/09	REVISED UTILITY EASEMENTS PER JCSA COMMENTS	JFS	
1	2/9/09	REVISED PER COUNTY COMMENTS	JFS	

Designed	Drawn
JAG/MJR	JFS
Scale	Date
1"=60'	12/04/07
Project No.	9272
Drawing No.	3 OF 3