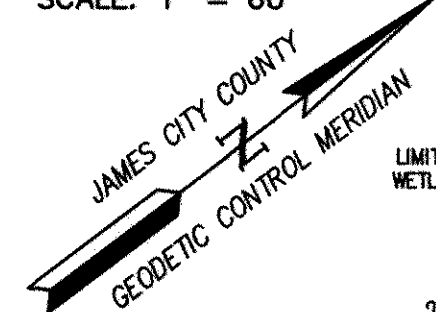
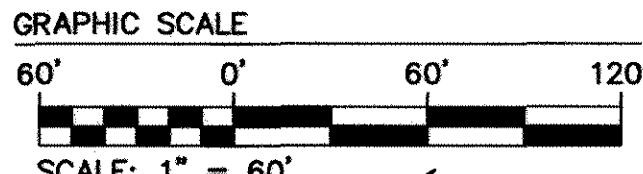
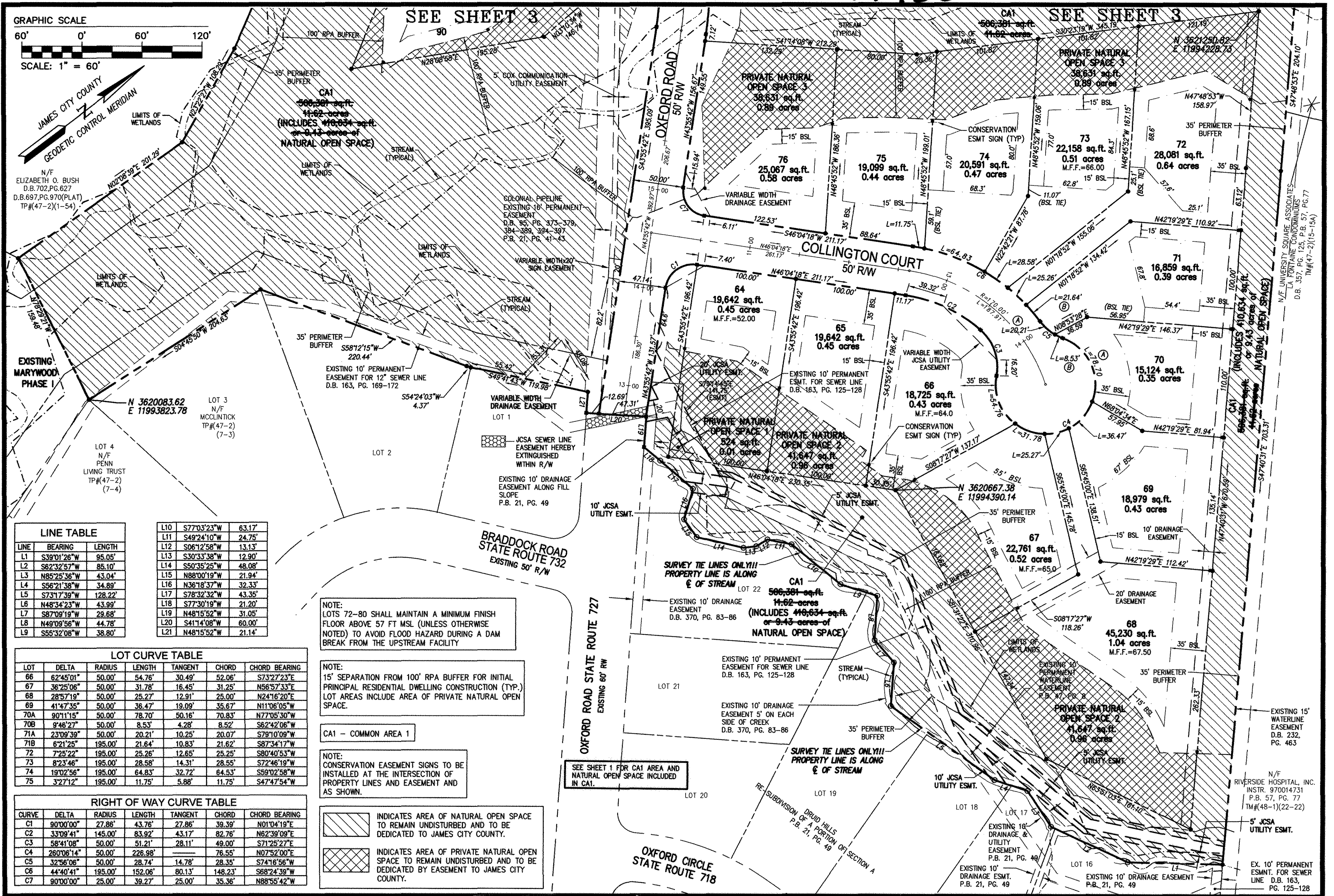


160017400

150008767



N/F ELIZABETH O. BUSH  
D.B. 702, PG. 627  
D.B. 697, PG. 970 (PLAT)  
TP#(47-2)(1-54)

**LINE TABLE**

LINE	BEARING	LENGTH
L1	S39°01'26"W	95.05'
L2	S62°32'57"W	85.10'
L3	N85°25'36"W	43.04'
L4	S56°21'38"W	34.89'
L5	S73°17'39"W	128.22'
L6	N48°34'23"W	43.99'
L7	S87°09'19"W	29.68'
L8	N49°09'56"W	44.78'
L9	S55°32'08"W	38.80'

L10	S77°03'23"W	63.17'
L11	S49°24'10"W	24.75'
L12	S06°12'58"W	13.13'
L13	S30°33'38"W	12.90'
L14	S50°35'25"W	48.08'
L15	N88°00'19"W	21.94'
L16	N36°18'37"W	32.33'
L17	S78°32'32"W	43.35'
L18	S77°30'19"W	21.20'
L19	N48°15'52"W	31.05'
L20	S41°14'08"W	60.00'
L21	N48°15'52"W	21.14'

**LOT CURVE TABLE**

LOT	DELTA	RADIUS	LENGTH	TANGENT	CHORD	CHORD BEARING
66	62°45'01"	50.00'	54.78'	30.49'	52.06'	S73°27'23"E
67	36°25'06"	50.00'	31.78'	16.45'	31.25'	N56°57'33"E
68	28°57'19"	50.00'	25.27'	12.91'	25.00'	N24°16'20"E
69	41°47'35"	50.00'	36.47'	19.09'	35.67'	N11°06'05"W
70A	90°11'15"	50.00'	78.70'	50.16'	70.83'	N77°05'30"W
70B	9°48'27"	50.00'	8.53'	4.28'	8.52'	S62°42'06"W
71A	23°09'39"	50.00'	20.21'	10.25'	20.07'	S79°10'09"W
71B	62°1'25"	195.00'	21.64'	10.83'	21.62'	S87°34'17"W
72	7°25'22"	195.00'	25.26'	12.65'	25.25'	S80°40'53"W
73	8°23'46"	195.00'	28.58'	14.31'	28.55'	S72°46'19"W
74	19°02'56"	195.00'	64.83'	32.72'	64.53'	S59°02'58"W
75	3°27'12"	195.00'	11.75'	5.88'	11.75'	S47°47'54"W

**RIGHT OF WAY CURVE TABLE**

CURVE	DELTA	RADIUS	LENGTH	TANGENT	CHORD	CHORD BEARING
C1	90°00'00"	27.86'	43.76'	27.86'	39.39'	N01°04'19"E
C2	33°09'41"	145.00'	83.92'	43.17'	82.76'	N82°39'09"E
C3	58°41'08"	50.00'	51.21'	28.11'	49.00'	S71°25'27"E
C4	26°06'14"	50.00'	226.98'	76.55'	107.52'00"E	
C5	32°56'06"	50.00'	28.74'	14.78'	28.35'	S74°16'56"W
C6	44°40'41"	195.00'	152.06'	80.13'	148.23'	S68°24'39"W
C7	90°00'00"	25.00'	39.27'	25.00'	35.36'	N88°55'42"W

NOTE: LOTS 72-80 SHALL MAINTAIN A MINIMUM FINISH FLOOR ABOVE 57 FT MSL (UNLESS OTHERWISE NOTED) TO AVOID FLOOD HAZARD DURING A DAM BREAK FROM THE UPSTREAM FACILITY

NOTE: 15' SEPARATION FROM 100' RPA BUFFER FOR INITIAL PRINCIPAL RESIDENTIAL DWELLING CONSTRUCTION (TYP.) LOT AREAS INCLUDE AREA OF PRIVATE NATURAL OPEN SPACE.

CA1 - COMMON AREA 1

NOTE: CONSERVATION EASEMENT SIGNS TO BE INSTALLED AT THE INTERSECTION OF PROPERTY LINES AND EASEMENT AND AS SHOWN.

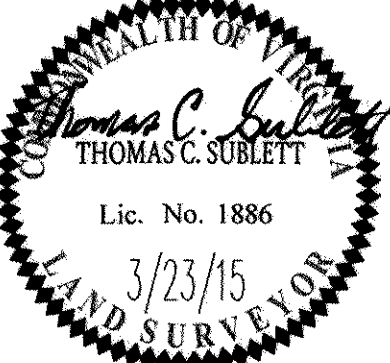
- INDICATES AREA OF NATURAL OPEN SPACE TO REMAIN UNDISTURBED AND TO BE DEDICATED TO JAMES CITY COUNTY.
- INDICATES AREA OF PRIVATE NATURAL OPEN SPACE TO REMAIN UNDISTURBED AND TO BE DEDICATED BY EASEMENT TO JAMES CITY COUNTY.

City of Williamsburg & County of James City  
Circuit Court: This PLAT was recorded on  
10-3-2016  
at 8:45 AM PM, PB PG  
Document # 160017400  
MONA A. FOLEY, CLERK

City of Williamsburg & County of James City  
Circuit Court: This PLAT was recorded on  
May 11, 2015  
at 3:36 AM PM, PB PG  
Document # 150008767  
BETSY B. WOOLRIDGE, CLERK  
Amy Storey, Dep. Clerk

**PLAT OF CORRECTION**  
**PLAT OF SUBDIVISION**  
**MARYWOOD**  
PHASE II  
LOTS 64-90  
PREPARED FOR CENTEX HOMES

JAMESTOWN DISTRICT JAMES CITY COUNTY VIRGINIA



No.	DATE	REVISION / COMMENT / NOTE	REVISED BY	REVIEWED BY
5	9/15/16	PLAT OF CORRECTION	JFS	
4	3/23/15	REVIEWED PLAT AND UPDATED NOTES	JAG	
3	8/26/14	REVIEWED PLAT AND UPDATED NOTES	JFS	
2	4/3/09	REVISED UTILITY EASEMENTS PER JCSA COMMENTS	JFS	
1	2/9/09	REVISED PER COUNTY COMMENTS	JFS	

Designed	JAG/MJR	Drawn	JFS
Scale	1"=60'	Date	12/04/07
Project No.	9272	Drawing No.	2 OF 3