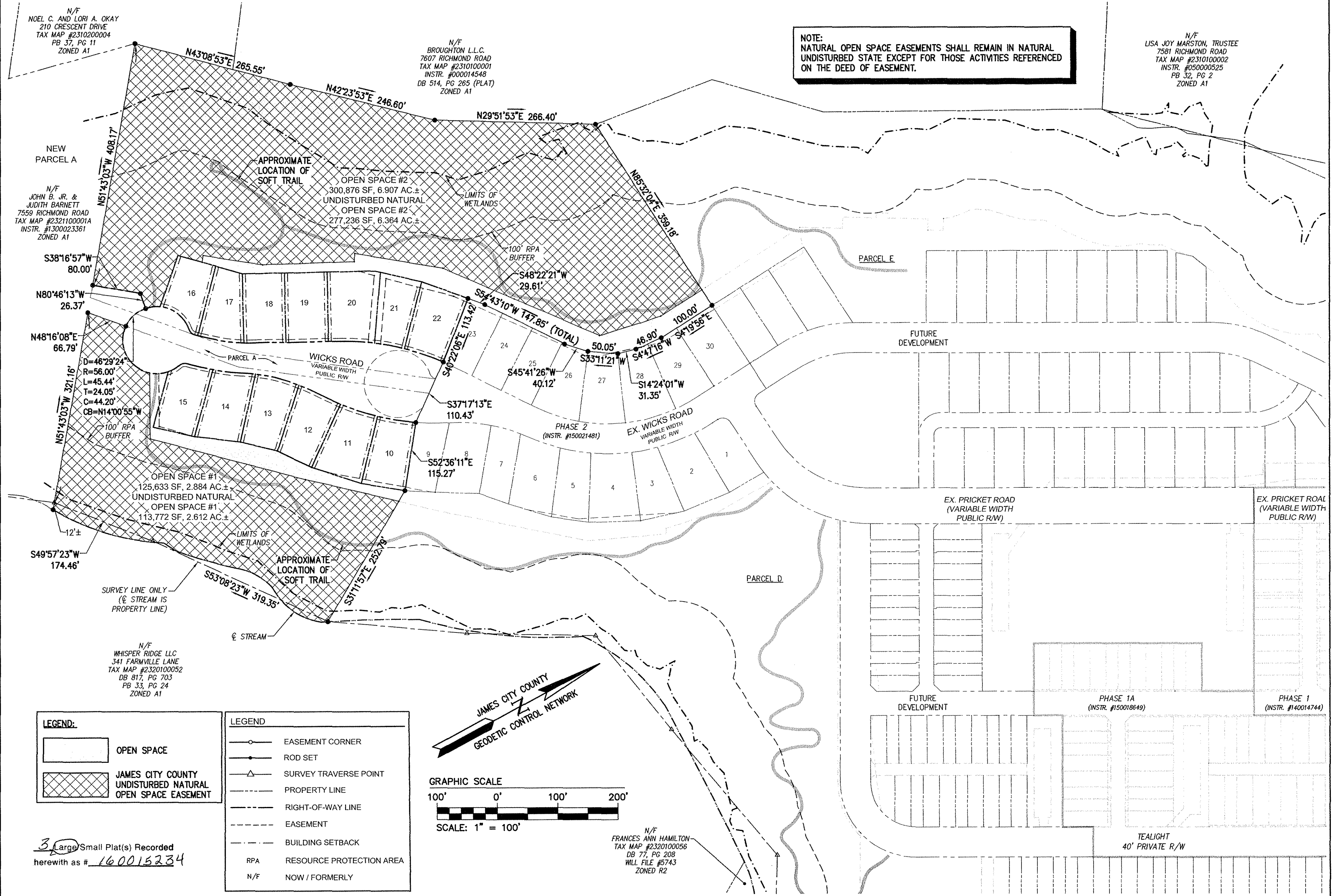
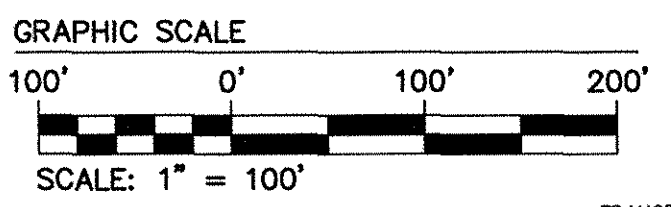


NOTE:
NATURAL OPEN SPACE EASEMENTS SHALL REMAIN IN NATURAL UNDISTURBED STATE EXCEPT FOR THOSE ACTIVITIES REFERENCED ON THE DEED OF EASEMENT.



LEGEND:
 OPEN SPACE
 JAMES CITY COUNTY UNDISTURBED NATURAL OPEN SPACE EASEMENT

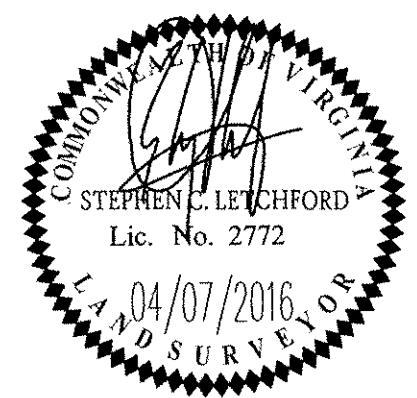
LEGEND:
 EASEMENT CORNER
 ROD SET
 SURVEY TRAVERSE POINT
 PROPERTY LINE
 RIGHT-OF-WAY LINE
 EASEMENT
 BUILDING SETBACK
 RPA RESOURCE PROTECTION AREA
 N/F NOW / FORMERLY



3 Large/Small Plat(s) Recorded herewith as # 160015234

City of Williamsburg & County of James City
Circuit Court: This PLAT was recorded on 8-25-2016
at 1:39 AM PM PB PG
Document # 160015234
MONA A. FOLEY, CLERK
Mona A. Foley Clerk

Rev.	Date	Description	JAG
1	04/07/16	REVISIONS PER JCC COMMENTS	JAG
			Revised By



AES
CONSULTING ENGINEERS
Hampton Roads | Central Virginia | Middle Peninsula
5248 Olde Towne Road, Suite 1
Williamsburg, Virginia 23188
Phone: (757) 253-0040
Fax: (757) 220-8994
www.aesva.com

REF: JCC 8-009-2016
 PLAT OF SUBDIVISION
 AND BOUNDARY LINE EXTINGUISHMENT
VILLAGE AT CANDLE STATION
 PHASE 3, LOTS 10-22 AND
 OPEN SPACE #1 AND #2
 FOR: CANDLE DEVELOPMENT, LLC
 STONEHOUSE DISTRICT JAMES CITY COUNTY VIRGINIA

Project Contacts: JAG/SCL
 Project Number: W10059-00
 Scale: 1"=100' Date: 01/29/16
 Sheet Number
2 of 3

S:\085\11005900-Candle Station\Map\085\11005900-Phase 3\100-000.dwg, 8/22/2016 1:27:51 PM