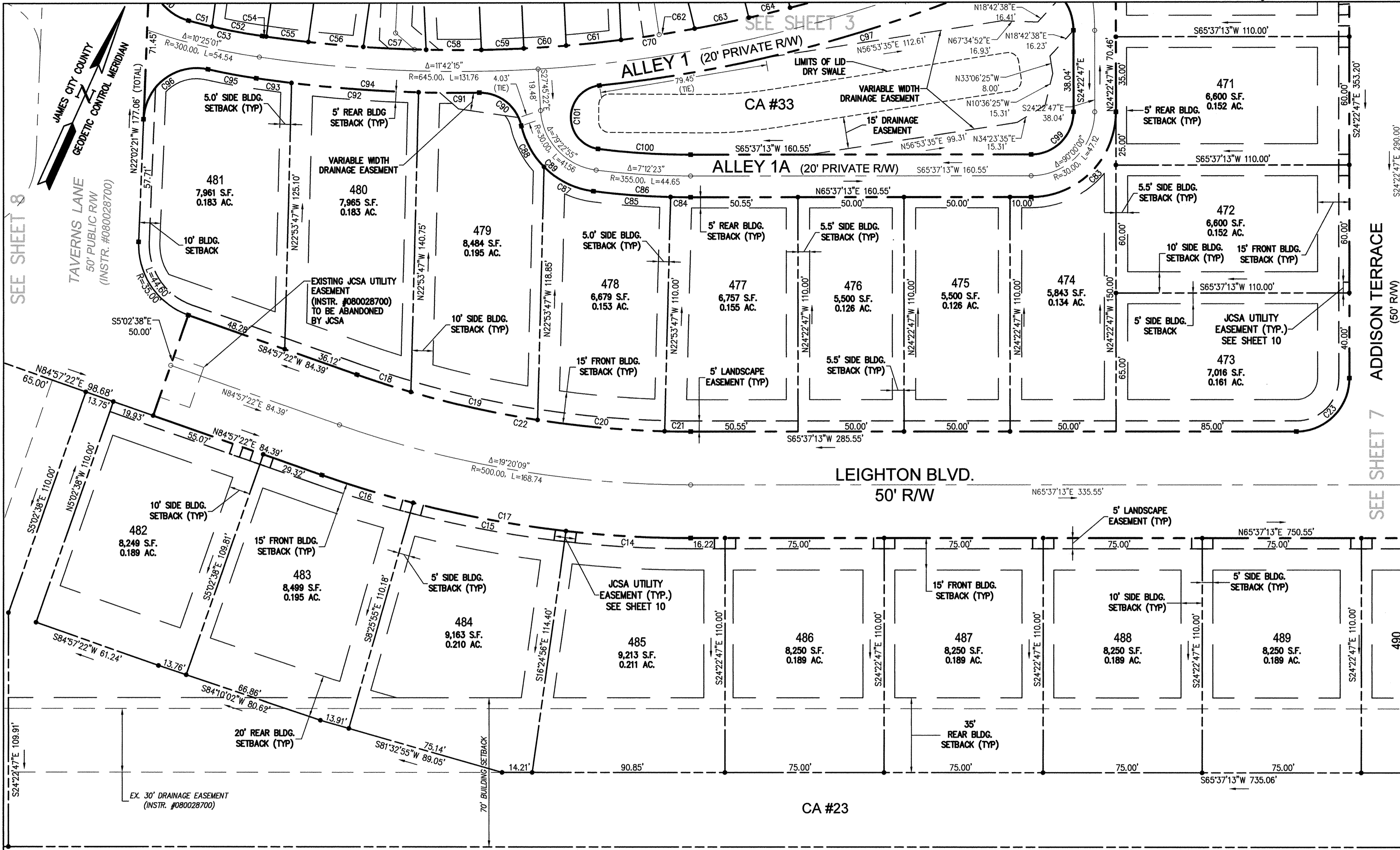


160014811



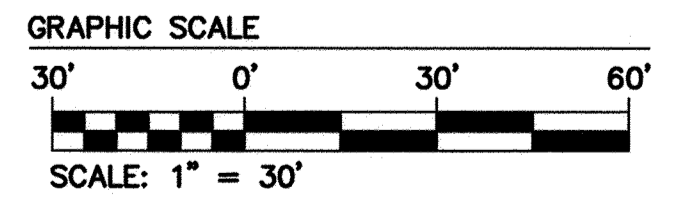
SEE SHEET 8

SEE SHEET 7

N/F
 GEORGE M. HANKINS, JR. TRUSTEE
 AND
 SHARON H. DUNN, TRUSTEE
 TAX MAP PARCEL # (12-4)(1-11)
 INSTRUMENT #970020151
 D.B. 24, PG. 372
 WILL FILE 00718-05W
 WILL FILE 98718-06W
 ZONE A1

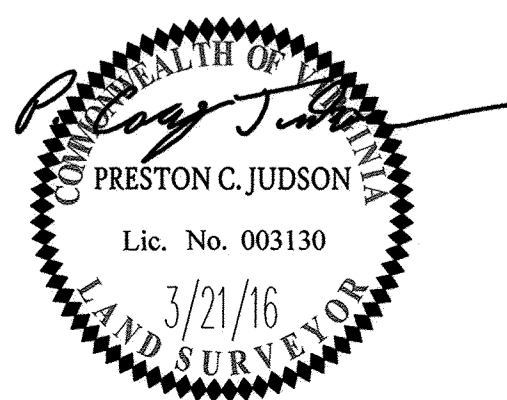
NOTE:
 SEE SHEET 10 FOR
 PROPOSED SIDEWALK
 AND JCSA UTILITY
 EASEMENT LOCATIONS

NOTE:
 SEE SHEET 11 FOR
 CURVE TABLE



Large Small Plat(s) Recorded
 herewith as # 160014811

City of Williamsburg & County of James City Circuit Court: This PLAT was recorded on 8-19-2016			
at 2:41 PM, PB	PG		
Document # <u>160014811</u>			
MONA A. FOLEY, CLERK			
<i>Mona A. Foley</i> , Clerk			
1	5-9-16	REVISED PER COUNTY COMMENTS DATED 4-1-16	JFS
Rev.	Date	Description	Revised By



5248 Olde Towne Road, Suite 1
 Williamsburg, Virginia 23188
 Phone: (757) 253-0040
 Fax: (757) 220-8994
 www.aesva.com

PLAT OF SUBDIVISION
WHITE HALL
SECTION 4, LOTS 400-494

STONEHOUSE DISTRICT | JAMES CITY COUNTY | VIRGINIA

Project Contacts:	PCJ/JFS
Project Number:	9048-20B
Scale:	Date:
1"=30'	3/21/2016
Sheet Number	
6 OF 11	

S:\081904\0308 - White Hall Sec 4\Survey\Plan\Map048-20B SUBD.dwg, 7/5/2016 3:10:33 PM, HP DesignJet 4000 HPGL2, RT, p3