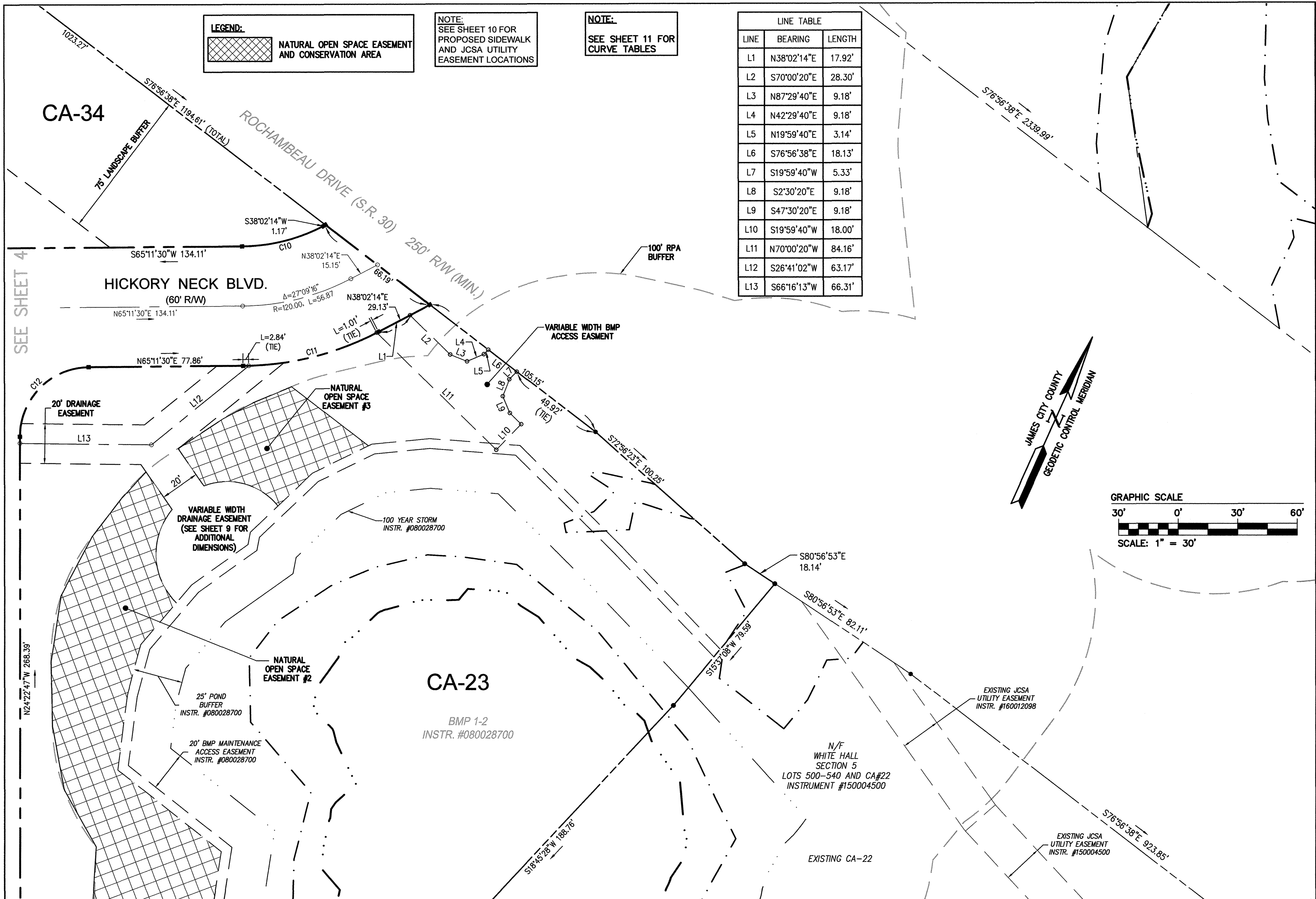


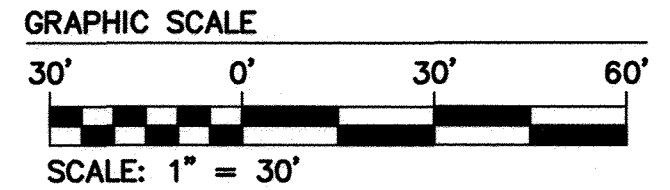
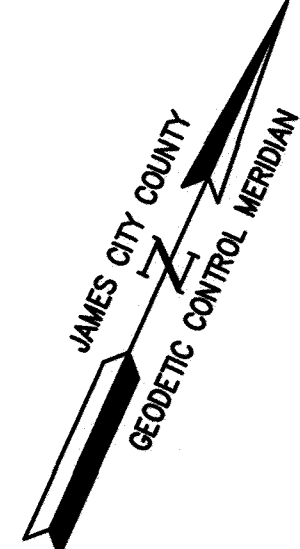
160014811



LEGEND:
 NATURAL OPEN SPACE EASEMENT AND CONSERVATION AREA

NOTE:
 SEE SHEET 10 FOR PROPOSED SIDEWALK AND JCSA UTILITY EASEMENT LOCATIONS

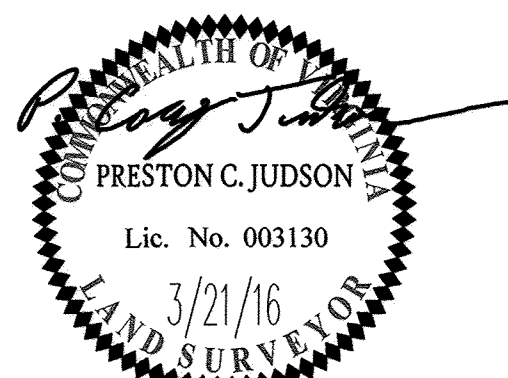
NOTE:
 SEE SHEET 11 FOR CURVE TABLES



S:\0805048108 - White Hall Sec 4\Survey\Plans\CA-23-208 SUBD.dwg, 7/5/2016 3:12:33 PM, HP DesignJet 4000 HPCL2_RTL.pcl

1	5-9-16	REVISED PER COUNTY COMMENTS DATED 4-1-16	JFS
Rev.	Date	Description	Revised By

City of Williamsburg & County of James City
 Circuit Court: This PLAT was recorded on
8-19-2016
 at 2:41 AM/PM, PB PG
 Document # 160014811
 MONA A. FOLEY, CLERK
Mona A. Foley, Clerk



Large/Small Plat(s) Recorded
 herewith as # 160014811

5248 Olde Towne Road, Suite 1
 Williamsburg, Virginia 23188
 Phone: (757) 253-0040
 Fax: (757) 220-8994
 www.aesva.com

Hampton Roads | Central Virginia | Middle Peninsula

PLAT OF SUBDIVISION
WHITE HALL
SECTION 4, LOTS 400-494

STONEHOUSE DISTRICT JAMES CITY COUNTY VIRGINIA

Project Contacts:	PCJ/JFS
Project Number:	9048-20B
Scale:	Date:
1"=30'	3/21/2016
Sheet Number	
5 OF 11	