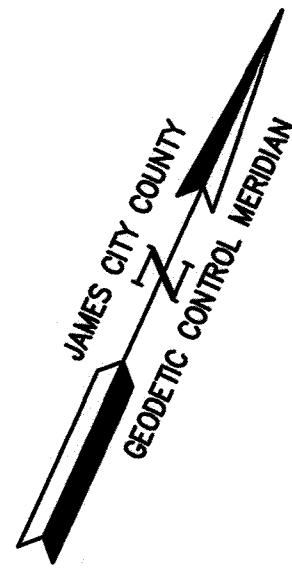
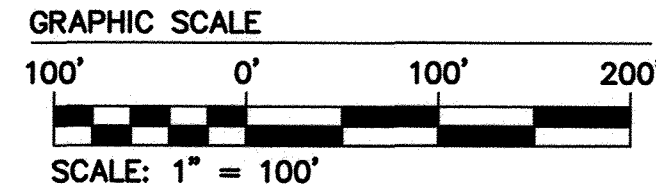


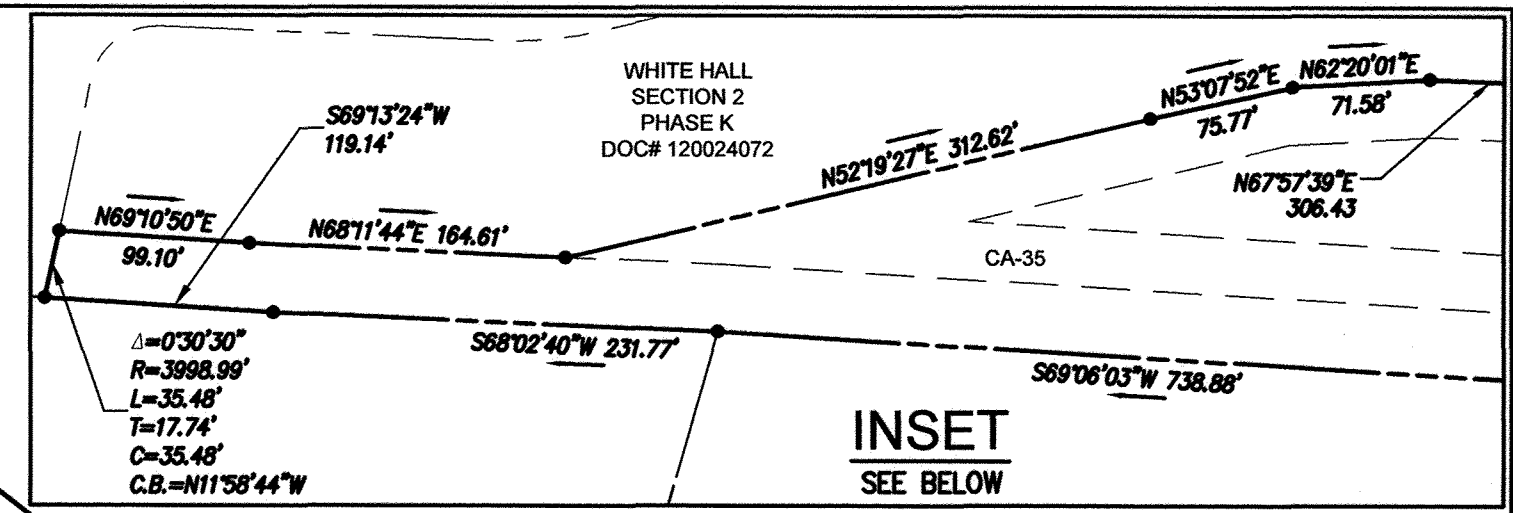
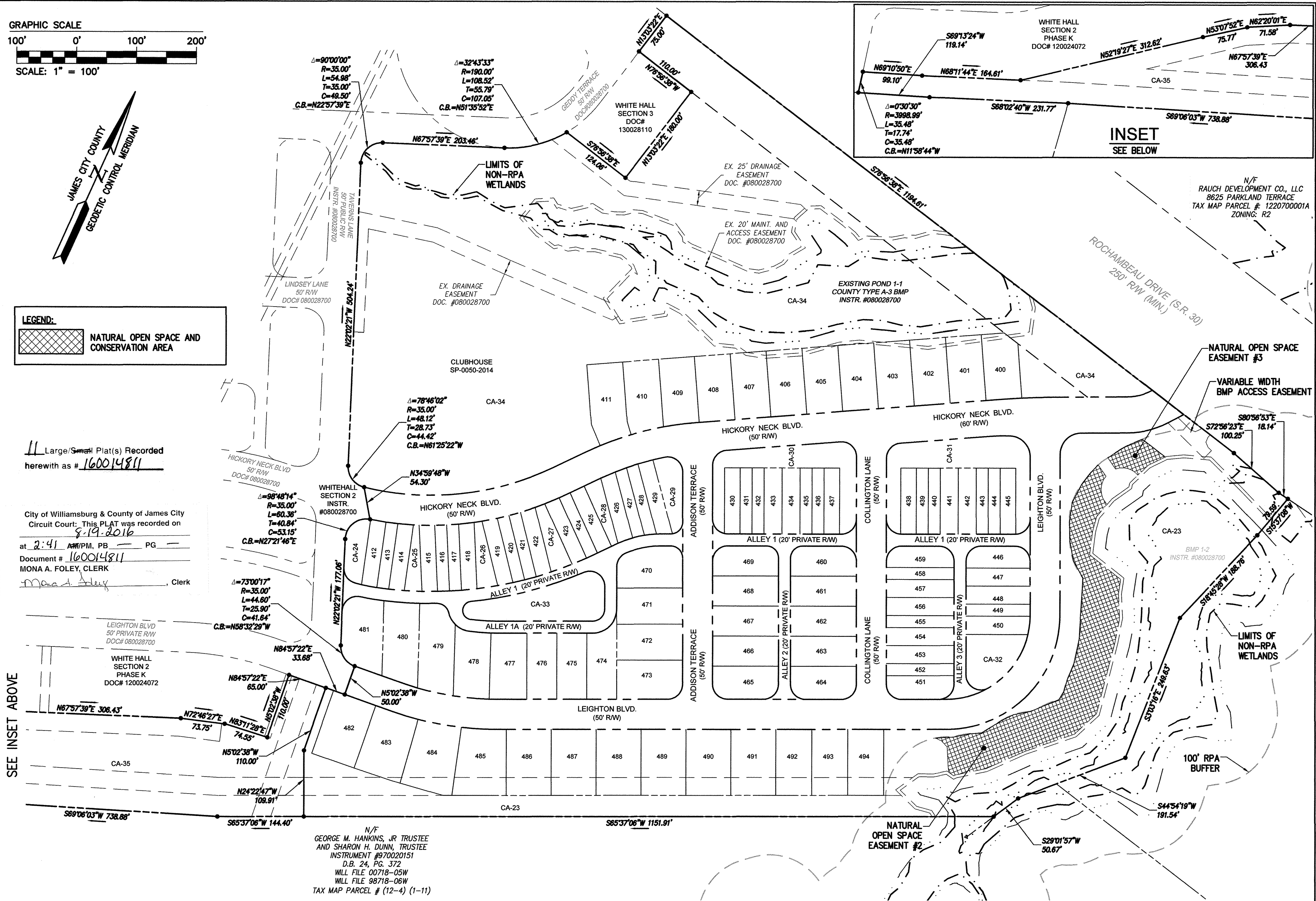
160014811



LEGEND:
 NATURAL OPEN SPACE AND CONSERVATION AREA

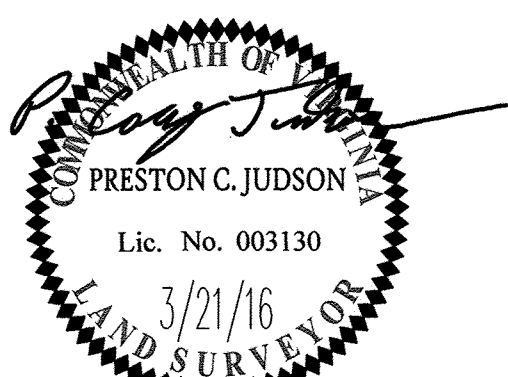
Large Small Plat(s) Recorded herewith as # 160014811

City of Williamsburg & County of James City Circuit Court: This PLAT was recorded on 8-19-2016 at 2:41 AM/PM, PB PG Document # 160014811 MONA A. FOLEY, CLERK



SEE INSET ABOVE

N/F GEORGE M. HANKINS, JR TRUSTEE AND SHARON H. DUNN, TRUSTEE INSTRUMENT #970020151 D.B. 24, PG. 372 WILL FILE 00718-05W WILL FILE 98718-06W TAX MAP PARCEL # (12-4) (1-11)



AES
 CONSULTING ENGINEERS
 5248 Olde Towne Road, Suite 1
 Williamsburg, Virginia 23188
 Phone: (757) 253-0040
 Fax: (757) 220-8994
 www.aesva.com
 Hampton Roads | Central Virginia | Middle Peninsula

PLAT OF SUBDIVISION
WHITE HALL
SECTION 4, LOTS 400-494
 STONEHOUSE DISTRICT JAMES CITY COUNTY VIRGINIA

Project Contacts: PCJ/JFS	
Project Number: 9048-20B	
Scale: 1"=100'	Date: 3/21/2016
Sheet Number	
2 OF 11	

Rev.	Date	Description	Revised By
1	5-9-16	REVISED PER COUNTY COMMENTS DATED 4-1-16	JFS

S:\0809048108 - White Hall Sec 4\Survey\Plat\160014811.dwg, 7/2/2016 3:03:39 PM, HP Designjet 4000 HPGL2, RTI, PC3