
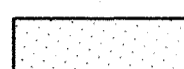


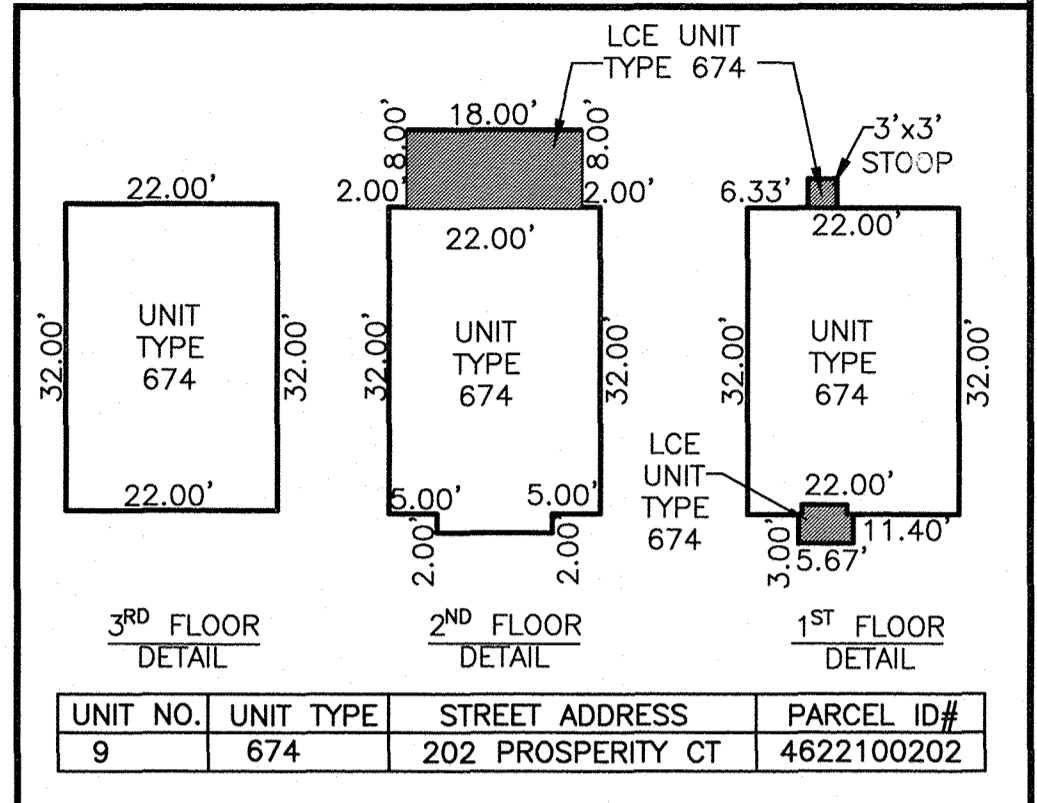
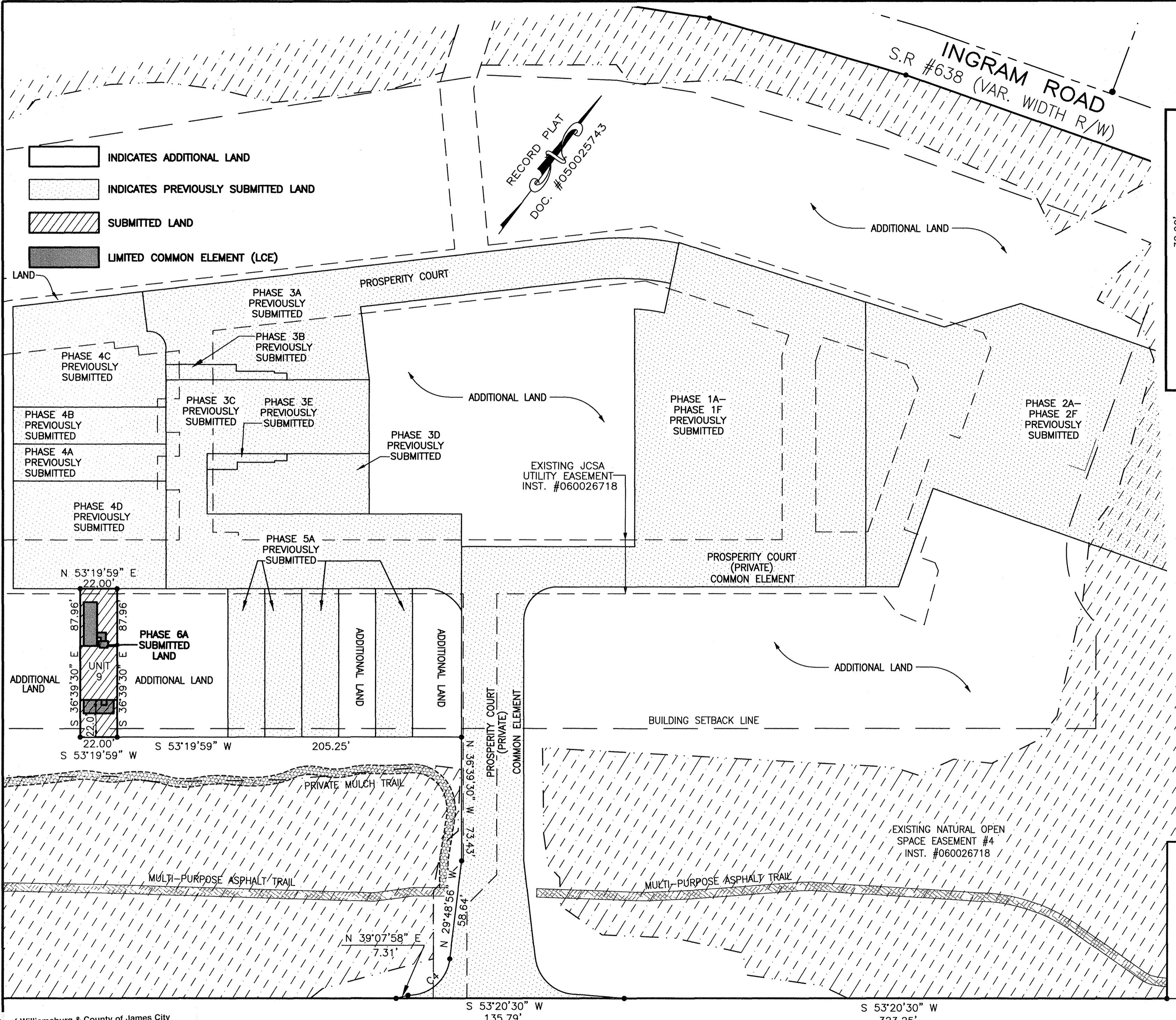


160012737

-  INDICATES ADDITIONAL LAND
-  INDICATES PREVIOUSLY SUBMITTED LAND
-  SUBMITTED LAND
-  LIMITED COMMON ELEMENT (LCE)

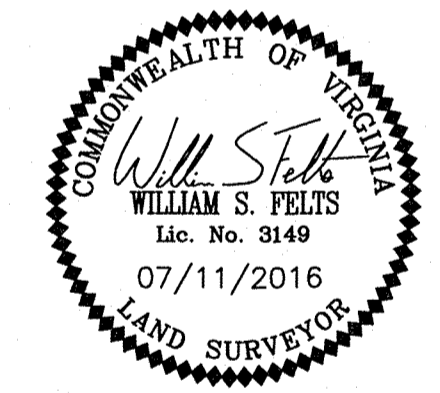


SURVEYORS CERTIFICATE

I HEREBY CERTIFY THAT THE PLAN PREVIOUSLY RECORDED FOR GOVERNOR'S GROVE AT FIVE FORKS, A CONDOMINIUM AT INSTRUMENT NO. 160009184 ACCURATELY DEPICT THE UNITS AND RELATED IMPROVEMENTS SHOWN AND THAT THEY COMPLY WITH THE CODE OF VIRGINIA OF 1950, AS AMENDED 55-79.58(B) AND ARE SUBSTANTIALLY COMPLETE.

I HEREBY CERTIFY THAT THIS PLAT IS ACCURATE AND COMPLIES WITH THE PROVISIONS OF SECTION 55-79.58 (A) OF THE CODE OF VIRGINIA 1950 AS AMENDED.

William S. Felts 07/11/16
 WILLIAM S. FELTS LIC. #3149 DATE



JCC Subdivision Agent Approval Not Required

PH
 14 July 2016
 PLAT OF
 PHASE 6A
 GOVERNOR'S GROVE AT FIVE FORKS
 A CONDOMINIUM
 LOCATED IN THE BERKELEY DISTRICT
 JAMES CITY COUNTY, VIRGINIA
 DATE: 07/11/2016 SCALE: 1" = 40' JOB# 06-460
 SHEET: 2 OF 2

LandTech Resources, Inc.
 Engineering & Surveying Consultants
 3925 Midlands Road, Williamsburg, VA 23188
 Phone: (757) 565-1677 Fax: (757) 565-0782
 web: landtechresources.com

City of Williamsburg & County of James City
 Circuit Court: This PLAT was recorded on
 7-18-2016
 at 2:33 AM/PM, PB PG
 Document # 160012737
 MONA A. FOLEY, CLERK
Monna A. Foley, Clerk

2 Large/Small Plat(s) Recorded herewith as # 160012737
JOHN TYLER HIGHWAY
STATE ROUTE #5
 (VARIABLE WIDTH PUBLIC R/W)

CURVE TABLE					
CURVE	RADIUS	LENGTH	CHORD	CHORD BEARING	DELTA
C4	24.50'	36.06'	32.89'	N 12°20'41" E	84°19'13"