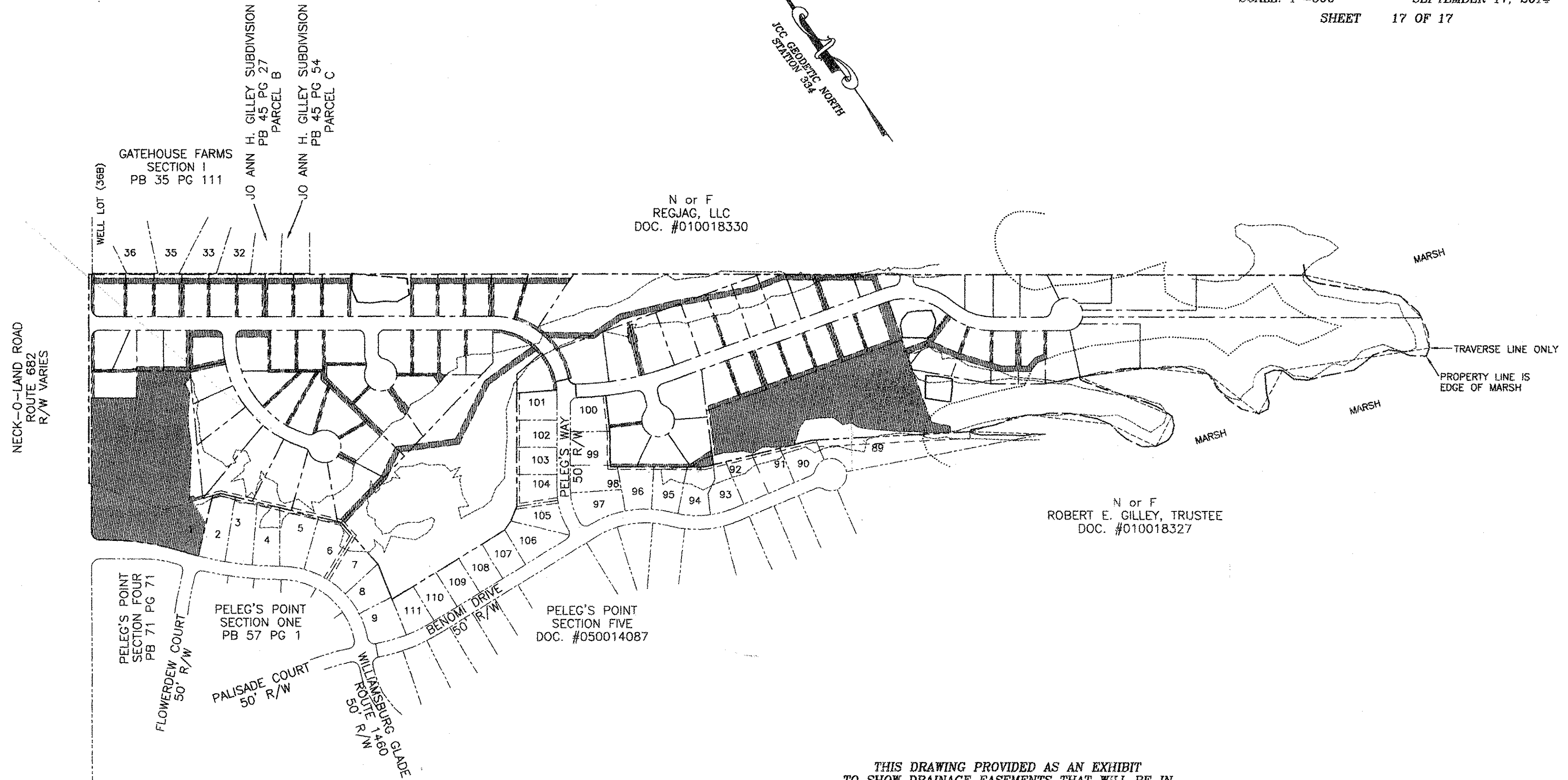
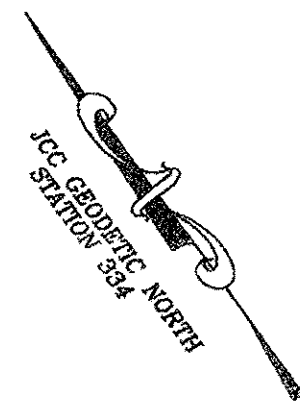


PELEG'S POINT
SECTION SIX
 JAMESTOWN DISTRICT
 JAMES CITY COUNTY, VIRGINIA

ALPA A.D. POTTS & ASSOCIATES, INC.
 11524 JEFFERSON AVENUE
 NEWPORT NEWS, VIRGINIA 23601

SCALE: 1"=300' SEPTEMBER 17, 2014
 SHEET 17 OF 17



N or F
 REGJAG, LLC
 DOC. #010018330

N or F
 ROBERT E. GILLEY, TRUSTEE
 DOC. #010018327

THIS DRAWING PROVIDED AS AN EXHIBIT
 TO SHOW DRAINAGE EASEMENTS THAT WILL BE IN
 EFFECT AFTER PLAT RECORDATION.
 OTHER EASEMENTS NOT SHOWN FOR CLARITY

 NEW DRAINAGE EASEMENTS
 (INCLUDES SLOPE & DRAINAGE EASEMENTS AND
 DRAINAGE, POND ACCESS & MAINTENANCE EASEMENTS)

EASEMENTS THAT ARE ONLY POND ACCESS & MAINTENANCE EASEMENTS NOT SHOWN

17 Large/Grass Plat(s) Recorded
 herewith as # 160011190

City of Williamsburg & County of James City
 Circuit Court: This PLAT was recorded on
 6-21-2016
 at 3:57 AM/PM, PB PG
 Document # 160011190
 MONA A. FOLEY, CLERK

Monica Foley, Clerk

