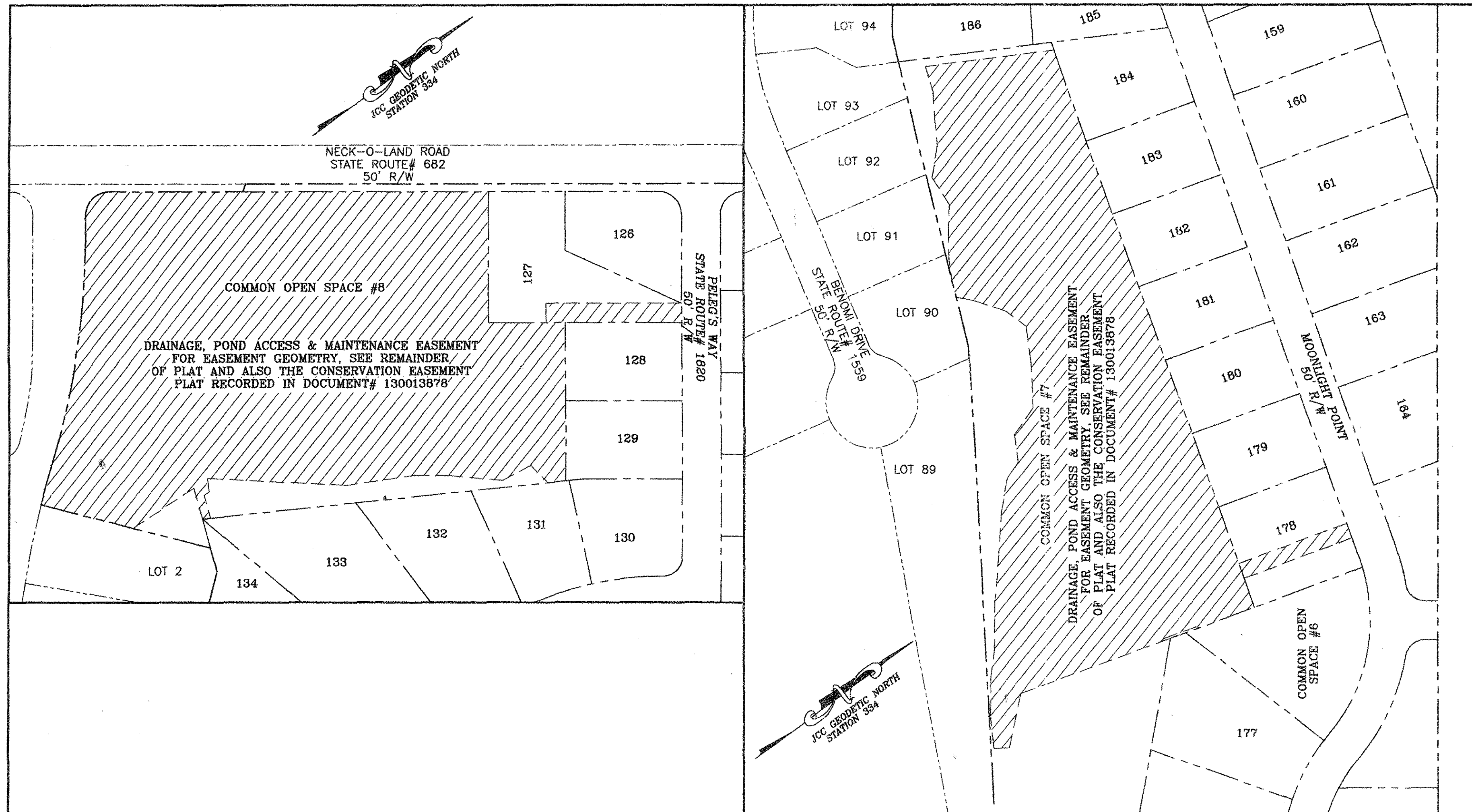


PELEG'S POINT
SECTION SIX
 JAMESTOWN DISTRICT
 JAMES CITY COUNTY, VIRGINIA

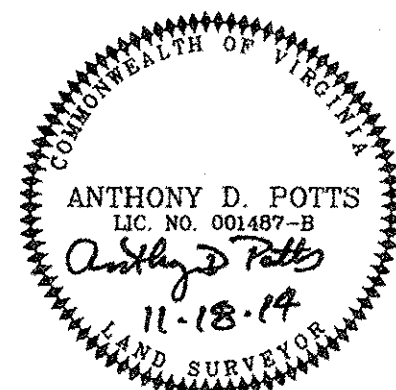
ADPA A.D. POTTS & ASSOCIATES, INC.
 11524 JEFFERSON AVENUE
 NEWPORT NEWS, VIRGINIA 23601

SCALE: 1"=100' SEPTEMBER 17, 2014
 SHEET 16 OF 17

THIS DRAWING PROVIDED AS AN EXHIBIT
 TO SHOW DRAINAGE, POND ACCESS & MAINTENANCE EASEMENTS
 THAT WILL BE IN EFFECT AFTER PLAT RECORDATION.
 OTHER EASEMENTS NOT SHOWN FOR CLARITY



EASEMENT DETAILS



17 Large/Small Plat(s) Recorded
 herewith as # 16001190

City of Williamsburg & County of James City
 Circuit Court: This PLAT was recorded on
6-21-2016
 at 3:57 AM/PM, PB PG
 Document # 16001190
 MONA A. FOLEY, CLERK
Maat Jey, Clerk

