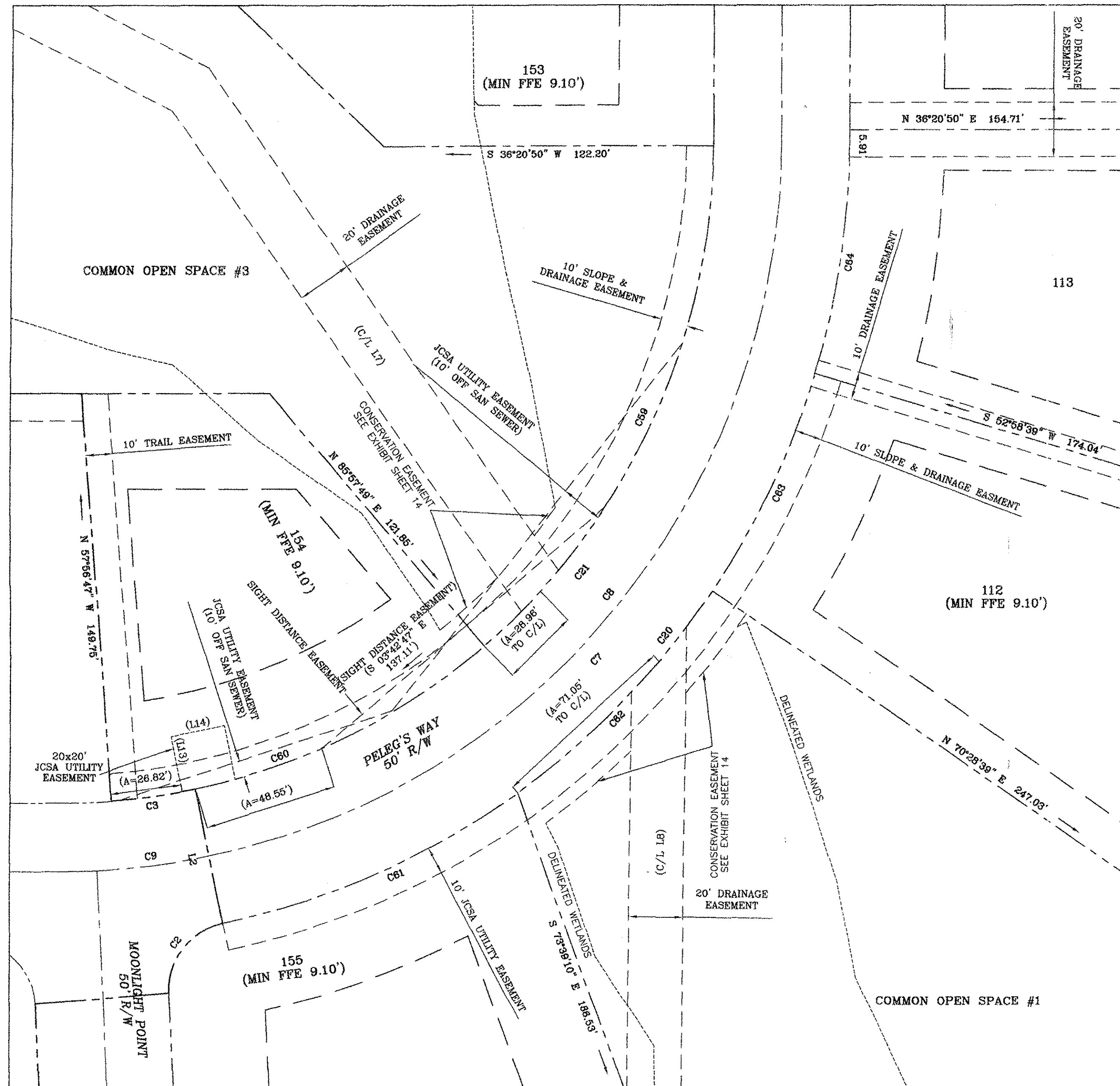


PELEG'S POINT SECTION SIX

JAMESTOWN DISTRICT
JAMES CITY COUNTY, VIRGINIA

ADPA A.D. POTTS & ASSOCIATES, INC.
11524 JEFFERSON AVENUE
NEWPORT NEWS, VIRGINIA 23601

SCALE: 1"=30' SEPTEMBER 17, 2014
SHEET 15 OF 17



EASEMENT DETAILS

17 Large/Small Plat(s) Recorded
herewith as # 16001190

City of Williamsburg & County of James City
Circuit Court: This PLAT was recorded on
6-21-2016

at 3:57 AM/PM, PB PG

Document # 16001190

MONA A. FOLEY, CLERK

Mona A. Foley, Clerk

