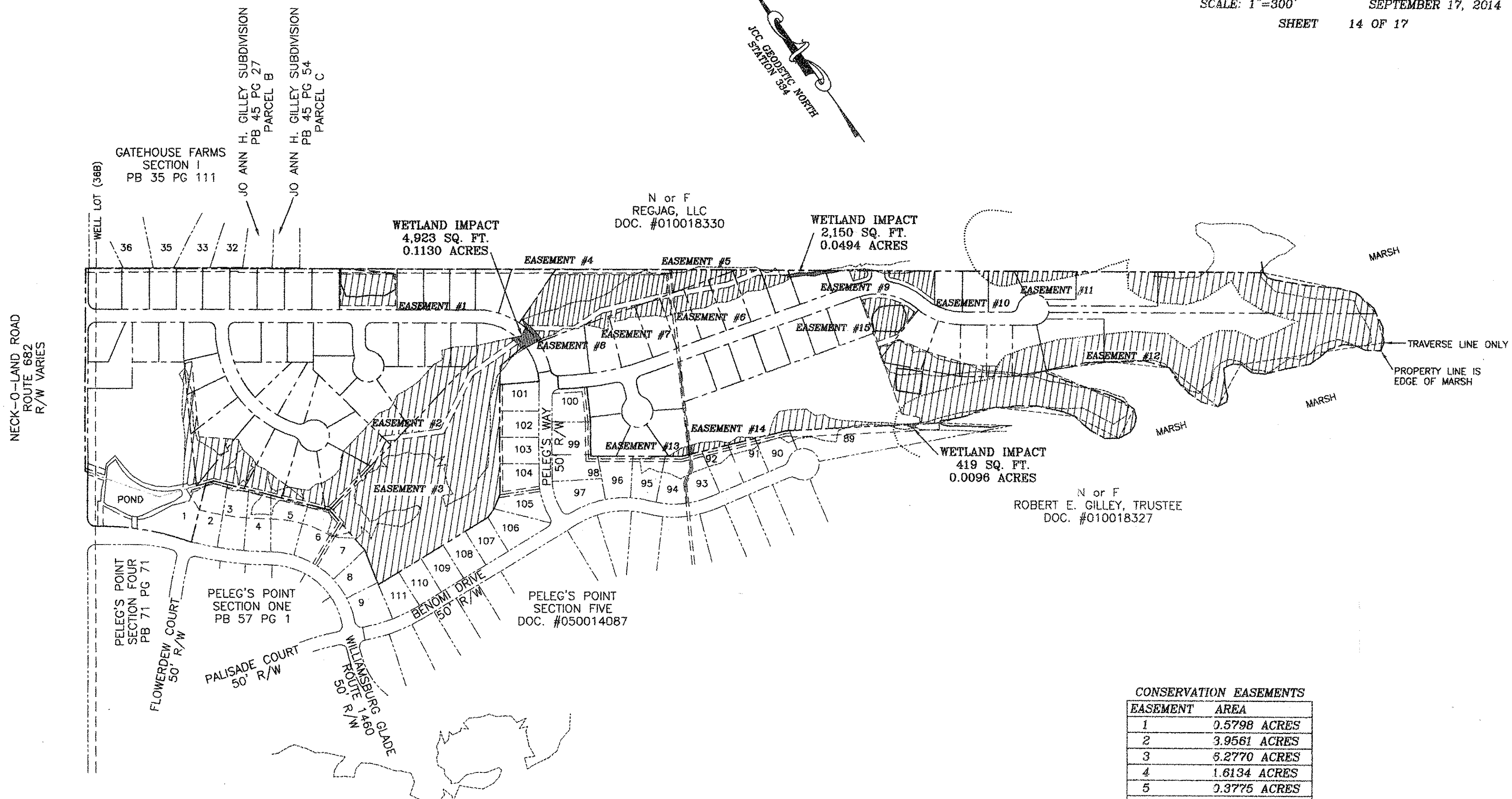
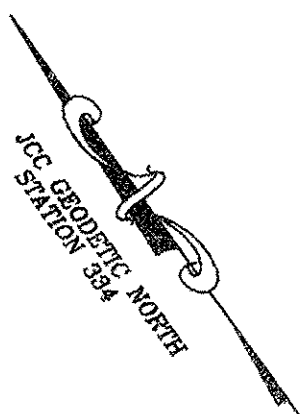


**PELEG'S POINT
SECTION SIX
JAMESTOWN DISTRICT
JAMES CITY COUNTY, VIRGINIA**

A.P.A. A.D. POTTS & ASSOCIATES, INC.
11524 JEFFERSON AVENUE
NEWPORT NEWS, VIRGINIA 23601

SCALE: 1"=300' SEPTEMBER 17, 2014
SHEET 14 OF 17



CONSERVATION EASEMENTS

EASEMENT	AREA
1	0.5798 ACRES
2	3.9561 ACRES
3	5.2770 ACRES
4	1.6134 ACRES
5	0.3775 ACRES
6	0.5126 ACRES
7	0.3487 ACRES
8	0.0351 ACRES
9	0.0451 ACRES
10	0.2362 ACRES
11	0.3331 ACRES
12	11.0454 ACRES
13	0.0349 ACRES
14	0.1159 ACRES
15	0.4718 ACRES
TOTAL	25.9826 ACRES

EASEMENT AREA REQUIRED FOR BMP POINTS COMPLIANCE
PROPOSED PELEG'S POINT SECTION 6 - 25.85 ACRES

ALL CONSERVATION EASEMENT AREAS SHOWN
ARE EXCLUSIVE OF ANY EXISTING EASEMENTS OR
PROPOSED PELEG'S POINT SECTION 6 EASEMENTS.

CONSERVATION EASEMENT
 WETLANDS IMPACT
DEQ PERMIT WP4-07-1052
USACE PERMIT NA0-06-2158/07-V1052

THIS DRAWING PROVIDED AS AN EXHIBIT.
FOR EASEMENT GEOMETRY SEE CONSERVATION
EASEMENT RECORDED IN DOCUMENT# 130013878

17 Large/Small Plat(s) Recorded
herewith as # 160011190

City of Williamsburg & County of James City
Circuit Court: This PLAT was recorded on
6-21-2016
at 3:57 AM/PM, PB — PG —
Document # 160011190
MONA A. FOLEY, CLERK
Mona A. Foley, Clerk

