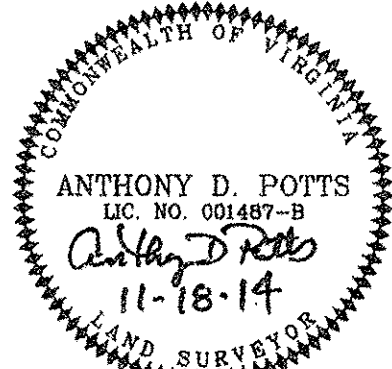
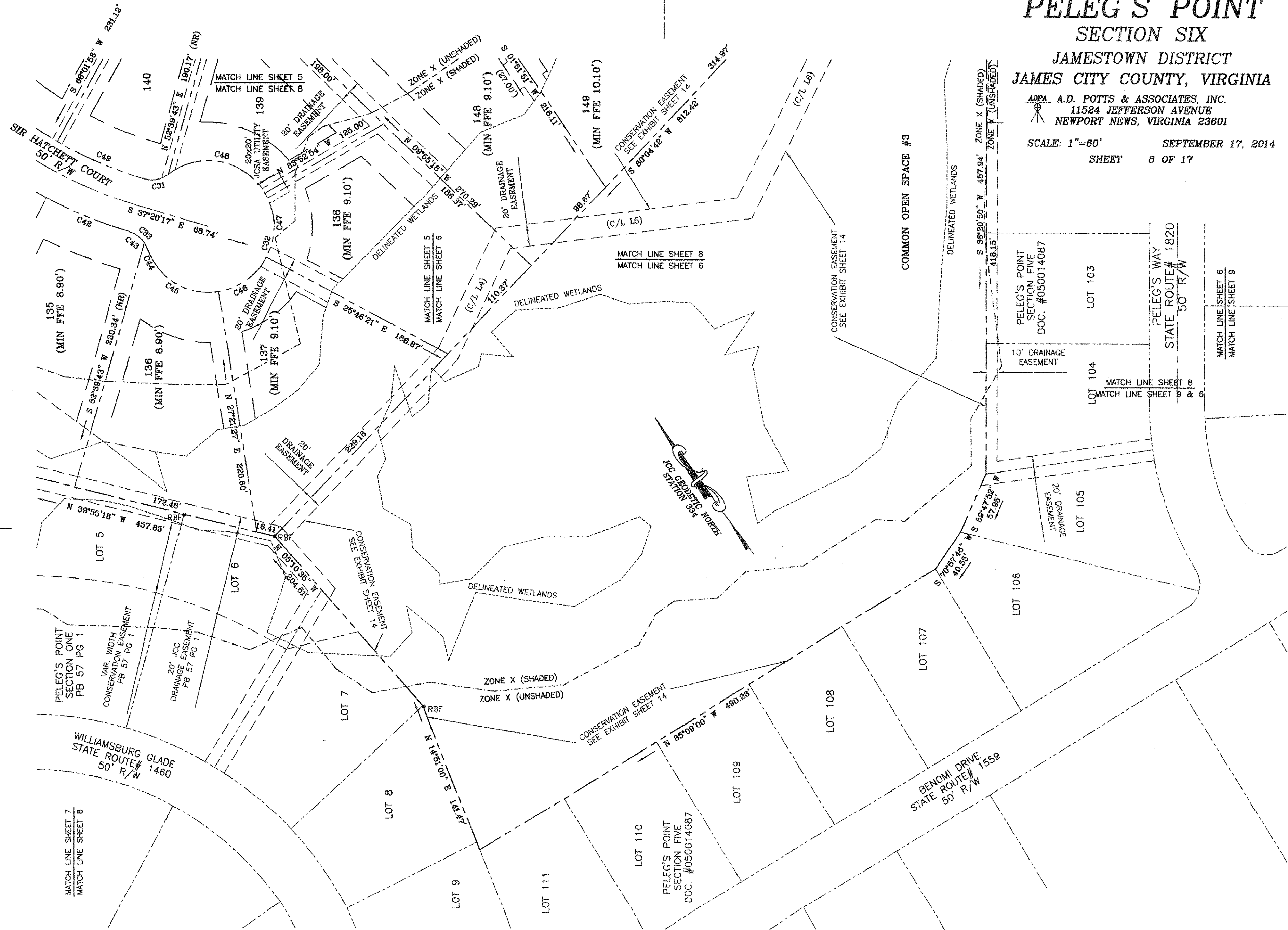


# PELEG'S POINT SECTION SIX

JAMESTOWN DISTRICT  
JAMES CITY COUNTY, VIRGINIA

A.D.P.A. A.D. POTTS & ASSOCIATES, INC.  
11524 JEFFERSON AVENUE  
NEWPORT NEWS, VIRGINIA 23601

SCALE: 1"=60' SEPTEMBER 17, 2014  
SHEET 8 OF 17



17 Large/Small Plat(s) Recorded  
herewith as # 16001190

City of Williamsburg & County of James City  
Circuit Court: This PLAT was recorded on  
6-21-2016  
at 3:57 AM/PM, PB PG  
Document # 16001190  
MONA A. FOLEY, CLERK

