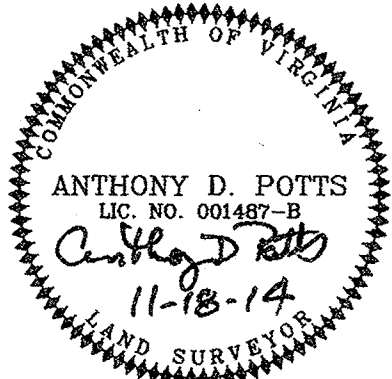
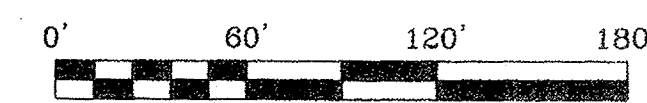
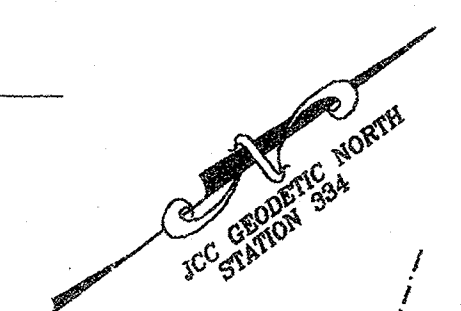
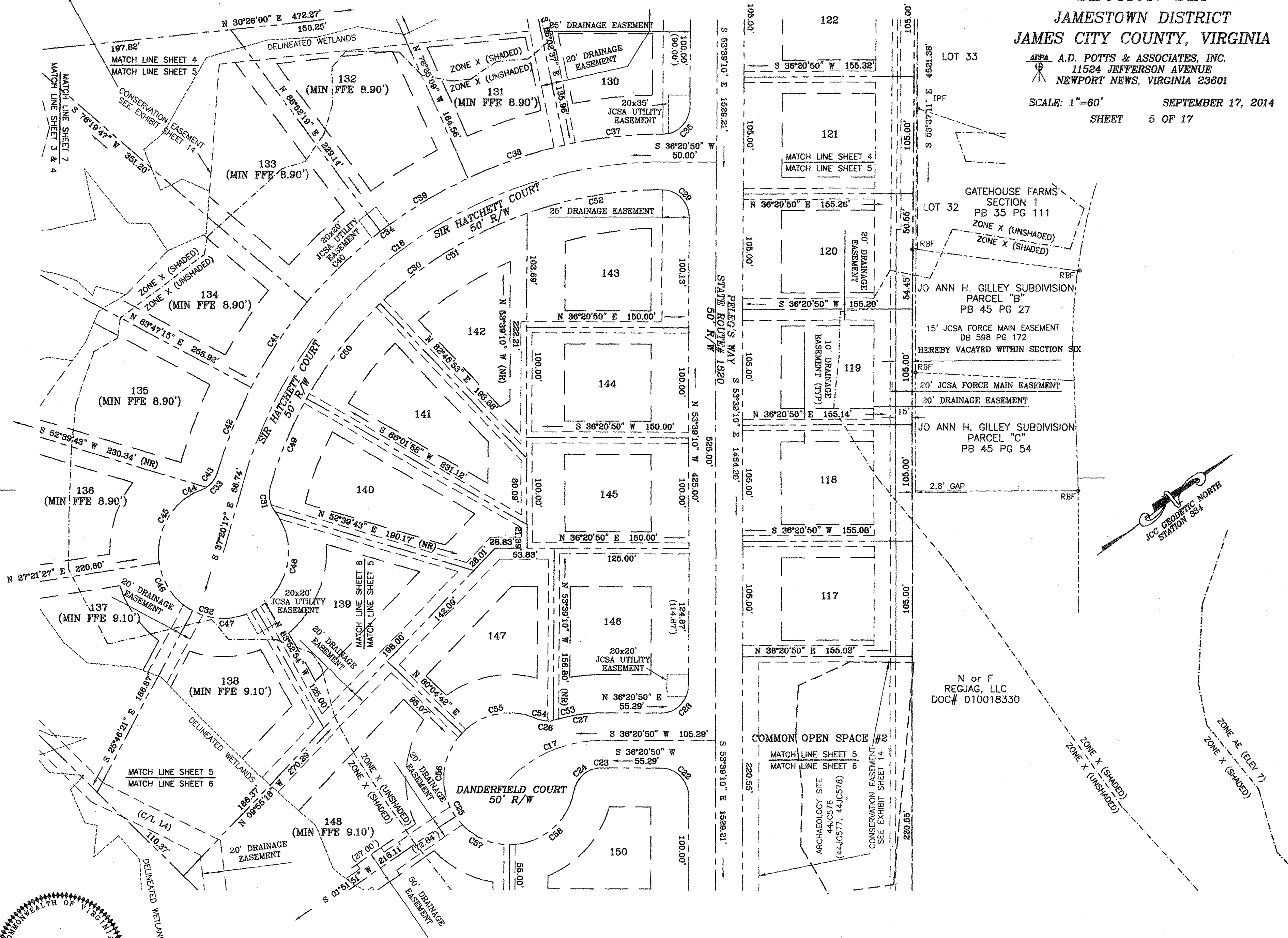


PELEG'S POINT SECTION SIX JAMESTOWN DISTRICT JAMES CITY COUNTY, VIRGINIA

APPA A.D. POTTS & ASSOCIATES, INC.
11524 JEFFERSON AVENUE
NEWPORT NEWS, VIRGINIA 23601

SCALE: 1"=60' SEPTEMBER 17, 2014
SHEET 5 OF 17



City of Williamsburg & County of James City
Circuit Court: This PLAT was recorded on
6-21-2016
at 3:57 AM/PM, PB PG
Document # 16001190
MONA A. FOLEY, CLERK
Mona A. Foley, Clerk

17 Large/Small Plat(s) Recorded
herewith as # 16001190