

160010933

NOTE: A 5' PERIMETER PRIVATE DRAINAGE EASEMENT SHALL BE DEDICATED ALONG PROPERTY LINES TO KCSA FOR MAINTENANCE OF DRAINAGE SWALES.

NOTE: JCSA HAS INGRESS/EGRESS AND MAINTENANCE RIGHTS FOR ALL JCSA UTILITIES LOCATED WITHIN THE RIGHT-OF-WAY.

FOR EASEMENT LINE AND CURVE TABLES, SEE SHEET 11.

11 Large/Small Plat(s) Recorded herewith as # 160010933

City of Williamsburg & County of James City Circuit Court: This PLAT was recorded on 6-16-2016 at 12:08 AM/PM, PB PG Document # 160010933 MONA A. FOLEY, CLERK

XANTERRA KINGSMILL, LLC KINGSMILL RESORT SUBDIVISION PARCEL R-2C1

DOCK LANDING VARIABLE WIDTH PRIVATE RIGHT-OF-WAY

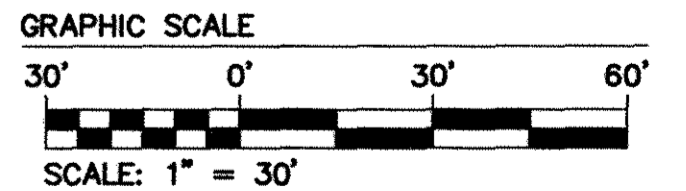
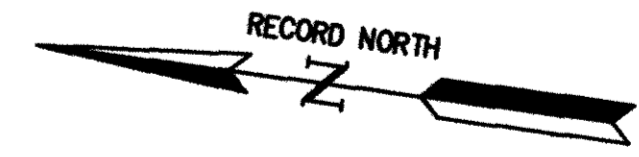
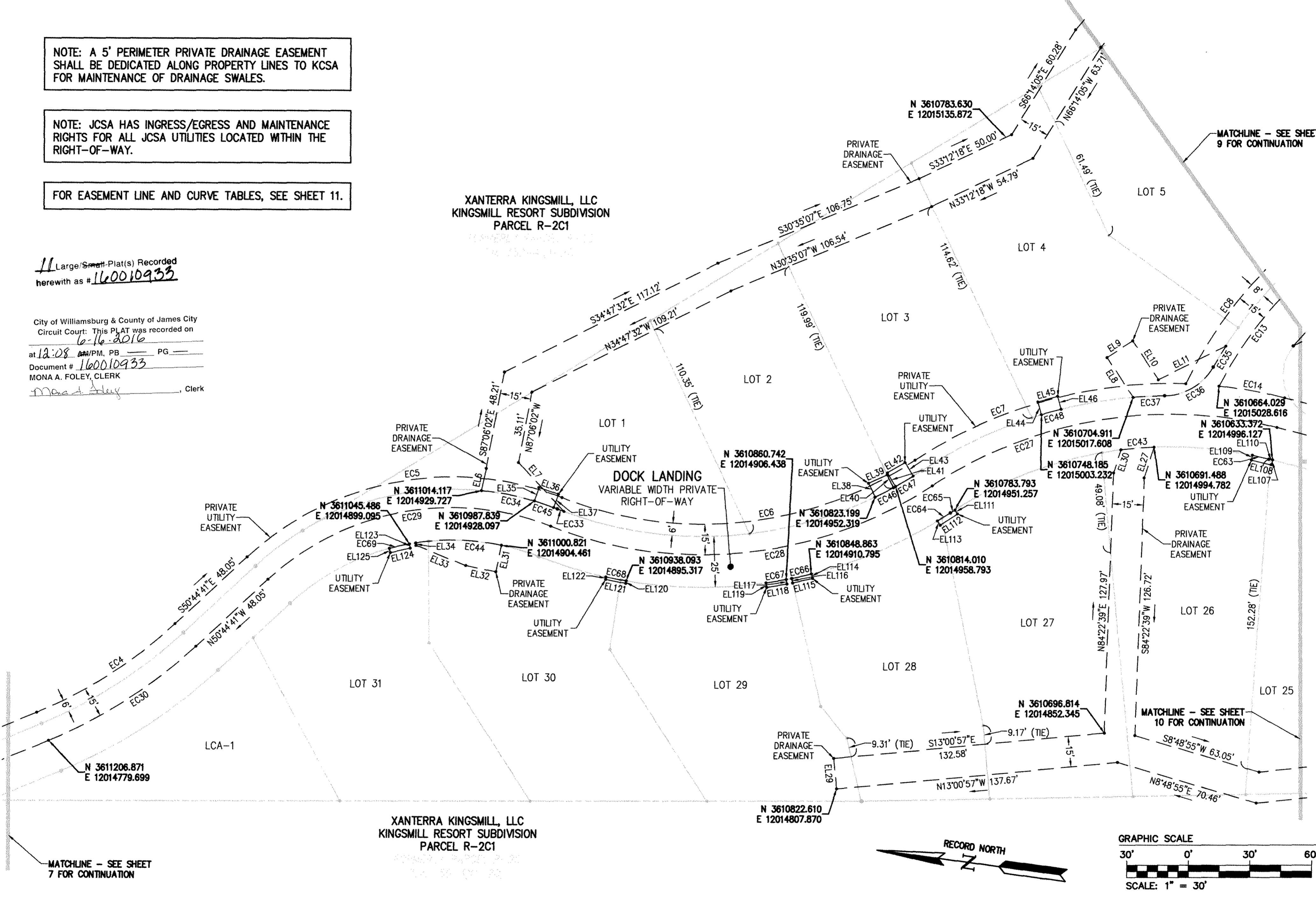
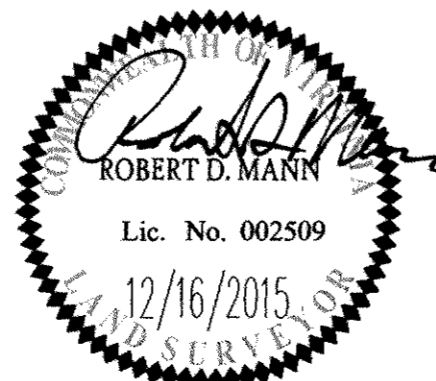


Table with 4 columns: Rev., Date, Description, Revised By.



AES CONSULTING ENGINEERS logo and contact information: 816 Greenbrier Circle, Suite F, Chesapeake, Virginia 23320, Phone: (757) 410-7436, www.aesva.com

PLAT OF SUBDIVISION BURWELL'S BLUFF AT KINGSMILL ON THE JAMES FOR XANTERRA KINGSMILL, LLC. ROBERTS DISTRICT, JAMES CITY COUNTY, VIRGINIA

Project Contacts: RDM, Project Number: 7753-39, Scale: 1" = 30', Date: 10/05/15, Sheet Number: 8 OF 11