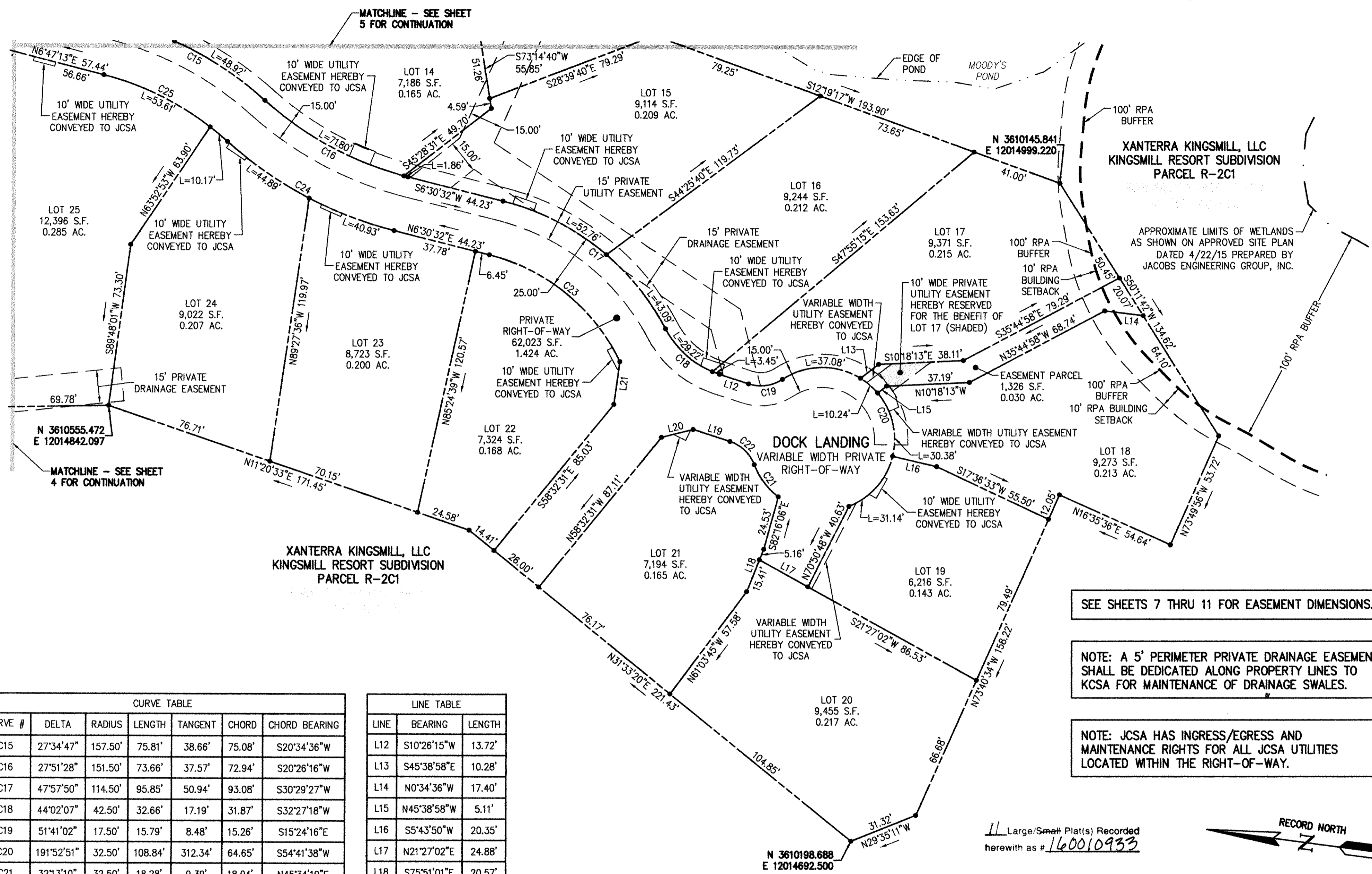


160010933



MATCHLINE - SEE SHEET 5 FOR CONTINUATION

MATCHLINE - SEE SHEET 4 FOR CONTINUATION

XANTERRA KINGSMILL, LLC
KINGSMILL RESORT SUBDIVISION
PARCEL R-2C1

SEE SHEETS 7 THRU 11 FOR EASEMENT DIMENSIONS.

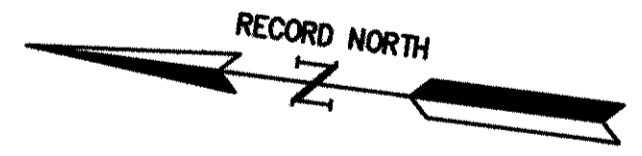
NOTE: A 5' PERIMETER PRIVATE DRAINAGE EASEMENT SHALL BE DEDICATED ALONG PROPERTY LINES TO KCSA FOR MAINTENANCE OF DRAINAGE SWALES.

NOTE: JCSA HAS INGRESS/EGRESS AND MAINTENANCE RIGHTS FOR ALL JCSA UTILITIES LOCATED WITHIN THE RIGHT-OF-WAY.

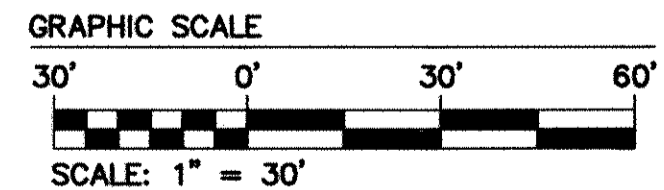
CURVE TABLE						
CURVE #	DELTA	RADIUS	LENGTH	TANGENT	CHORD	CHORD BEARING
C15	27°34'47"	157.50'	75.81'	38.66'	75.08'	S20°34'36"W
C16	27°51'28"	151.50'	73.66'	37.57'	72.94'	S20°26'16"W
C17	47°57'50"	114.50'	95.85'	50.94'	93.08'	S30°29'27"W
C18	44°02'07"	42.50'	32.66'	17.19'	31.87'	S32°27'18"W
C19	51°41'02"	17.50'	15.79'	8.48'	15.26'	S15°24'16"E
C20	191°52'51"	32.50'	108.84'	312.34'	64.65'	S54°41'38"W
C21	32°13'10"	32.50'	18.28'	9.39'	18.04'	N45°34'19"E
C22	51°14'40"	17.50'	15.65'	8.39'	15.14'	N36°03'35"E
C23	50°13'52"	89.50'	78.46'	41.95'	75.98'	N31°37'28"E
C24	27°51'28"	176.50'	85.82'	43.77'	84.97'	N20°26'16"E
C25	27°34'47"	132.50'	63.78'	32.52'	63.17'	N20°34'36"E

LINE TABLE		
LINE	BEARING	LENGTH
L12	S10°26'15"W	13.72'
L13	S45°38'58"E	10.28'
L14	N0°34'36"W	17.40'
L15	N45°38'58"W	5.11'
L16	S5°43'50"W	20.35'
L17	N21°27'02"E	24.88'
L18	S75°51'01"E	20.57'
L19	N10°26'15"E	17.42'
L20	N21°39'12"W	14.68'
L21	N89°59'31"E	19.46'

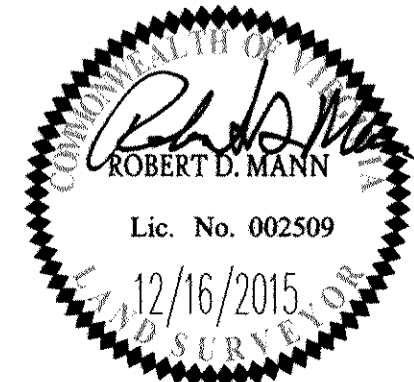
11 Large/Small Plat(s) Recorded
herewith as # 160010933



City of Williamsburg & County of James City
Circuit Court: This PLAT was recorded on
6-16-2016
at 12:08 AM/PM, PB PG
Document # 160010933
MONA A. FOLEY, CLERK
Mona Foley, Clerk



Rev.	Date	Description	Revised By



AES
CONSULTING ENGINEERS
816 Greenbrier Circle, Suite F
Chesapeake, Virginia 23320
Phone: (757) 410-7436
www.aesva.com
Hampton Roads | Central Virginia | Middle Peninsula

PLAT OF SUBDIVISION
BURWELL'S BLUFF
AT
KINGSMILL ON THE JAMES
FOR
XANTERRA KINGSMILL, LLC
ROBERTS DISTRICT JAMES CITY COUNTY VIRGINIA

Project Contacts: RDM
Project Number: 7753-39
Scale: 1" = 30'
Date: 10/05/15
Sheet Number
6 OF 11