

160010933

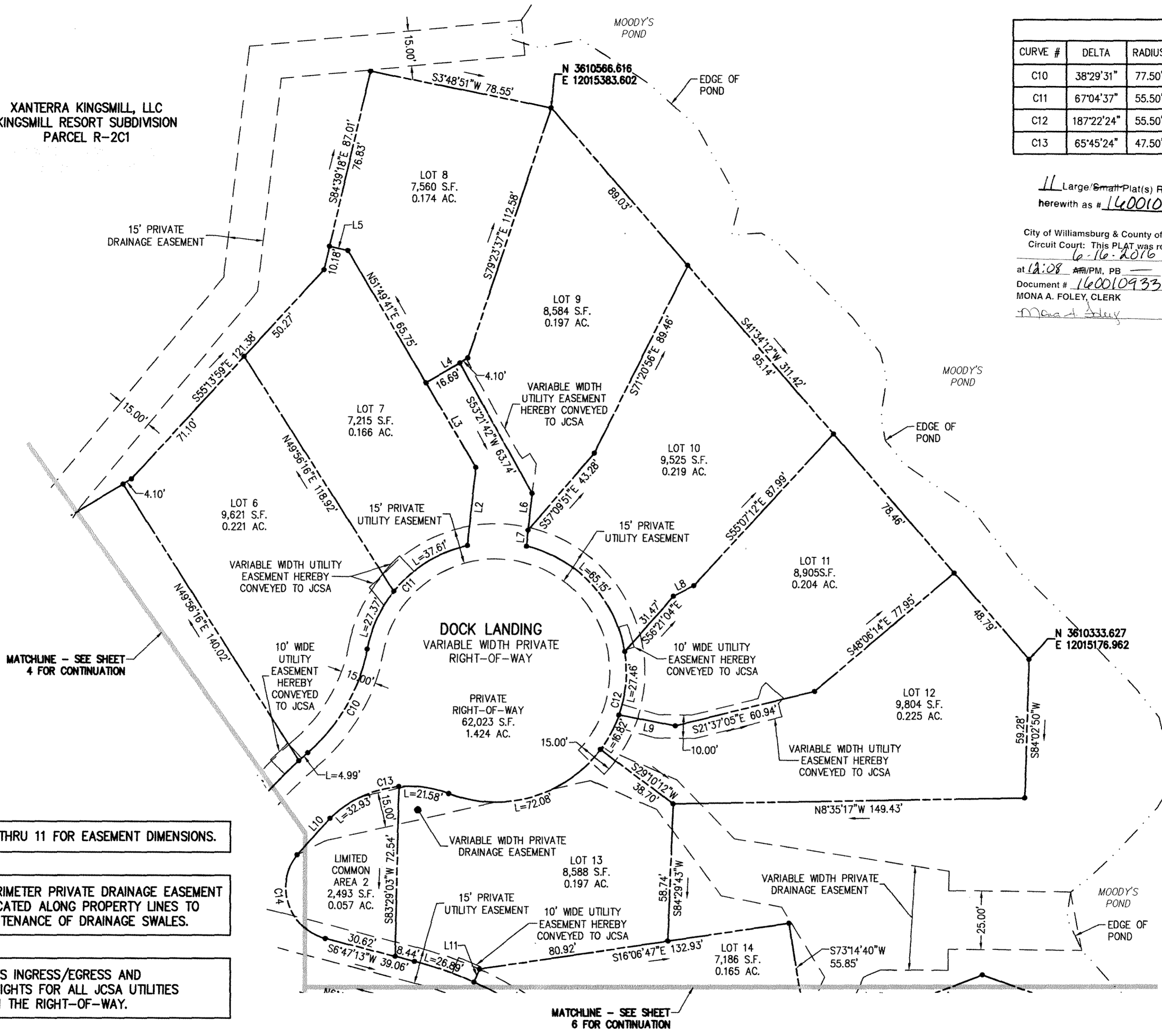
XANTERRA KINGSMILL, LLC  
KINGSMILL RESORT SUBDIVISION  
PARCEL R-2C1

CURVE TABLE						
CURVE #	DELTA	RADIUS	LENGTH	TANGENT	CHORD	CHORD BEARING
C10	38°29'31"	77.50'	52.07'	27.06'	51.09'	S68°04'29"E
C11	67°04'37"	55.50'	64.97'	36.79'	61.33'	S53°46'57"E
C12	187°22'24"	55.50'	181.50'	861.36'	110.77'	N80°23'47"W
C13	65°45'24"	47.50'	54.51'	30.70'	51.57'	N19°35'17"W

Large/Small Plat(s) Recorded  
herewith as # 160010933

City of Williamsburg & County of James City  
Circuit Court: This PLAT was recorded on  
6-16-2016  
at 12:08 PM, PB PG  
Document # 160010933  
MONA A. FOLEY, CLERK  
Mona A. Foley, Clerk

LINE TABLE		
LINE	BEARING	LENGTH
L2	N88°28'21"E	33.65'
L3	N51°49'41"E	41.86'
L4	S38°34'01"E	20.79'
L5	N4°46'06"E	7.95'
L6	S88°28'21"W	15.85'
L7	S88°28'21"W	6.84'
L8	S35°13'56"E	9.69'
L9	S3°19'06"W	24.45'
L10	N55°52'27"W	20.82'
L11	S75°15'01"E	6.02'

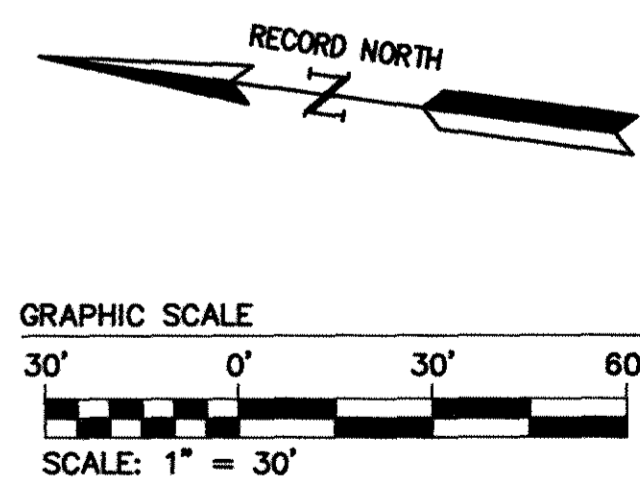


XANTERRA KINGSMILL, LLC  
KINGSMILL RESORT SUBDIVISION  
PARCEL R-2C1

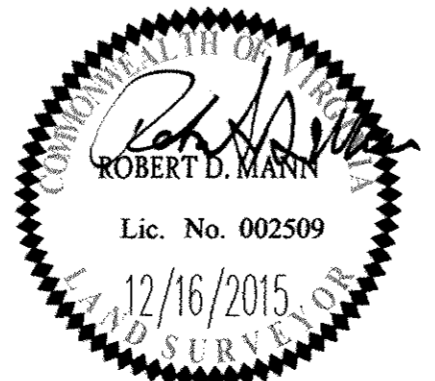
SEE SHEETS 7 THRU 11 FOR EASEMENT DIMENSIONS.

NOTE: A 5' PERIMETER PRIVATE DRAINAGE EASEMENT SHALL BE DEDICATED ALONG PROPERTY LINES TO KCSA FOR MAINTENANCE OF DRAINAGE SWALES.

NOTE: JCSA HAS INGRESS/EGRESS AND MAINTENANCE RIGHTS FOR ALL JCSA UTILITIES LOCATED WITHIN THE RIGHT-OF-WAY.



Rev.	Date	Description	Revised By



**AES**  
CONSULTING ENGINEERS  
816 Greenbrier Circle, Suite F  
Chesapeake, Virginia 23320  
Phone: (757) 410-7436  
www.aesva.com  
Hampton Roads | Central Virginia | Middle Peninsula

PLAT OF SUBDIVISION  
**BURWELL'S BLUFF**  
AT  
**KINGSMILL ON THE JAMES**  
FOR  
XANTERRA KINGSMILL, LLC  
ROBERTS DISTRICT JAMES CITY COUNTY VIRGINIA

Project Contacts: RDM  
Project Number: 7753-39  
Scale: 1" = 30' Date: 10/05/15  
Sheet Number  
**5 OF 11**