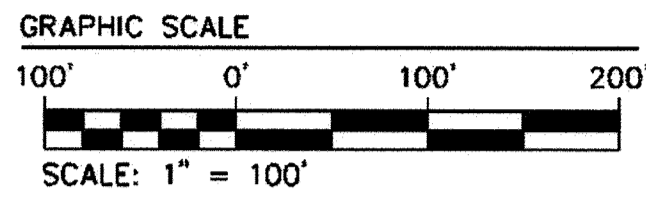


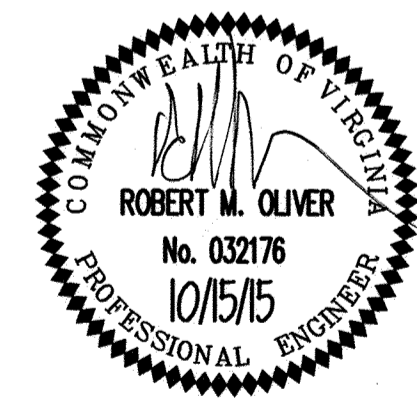
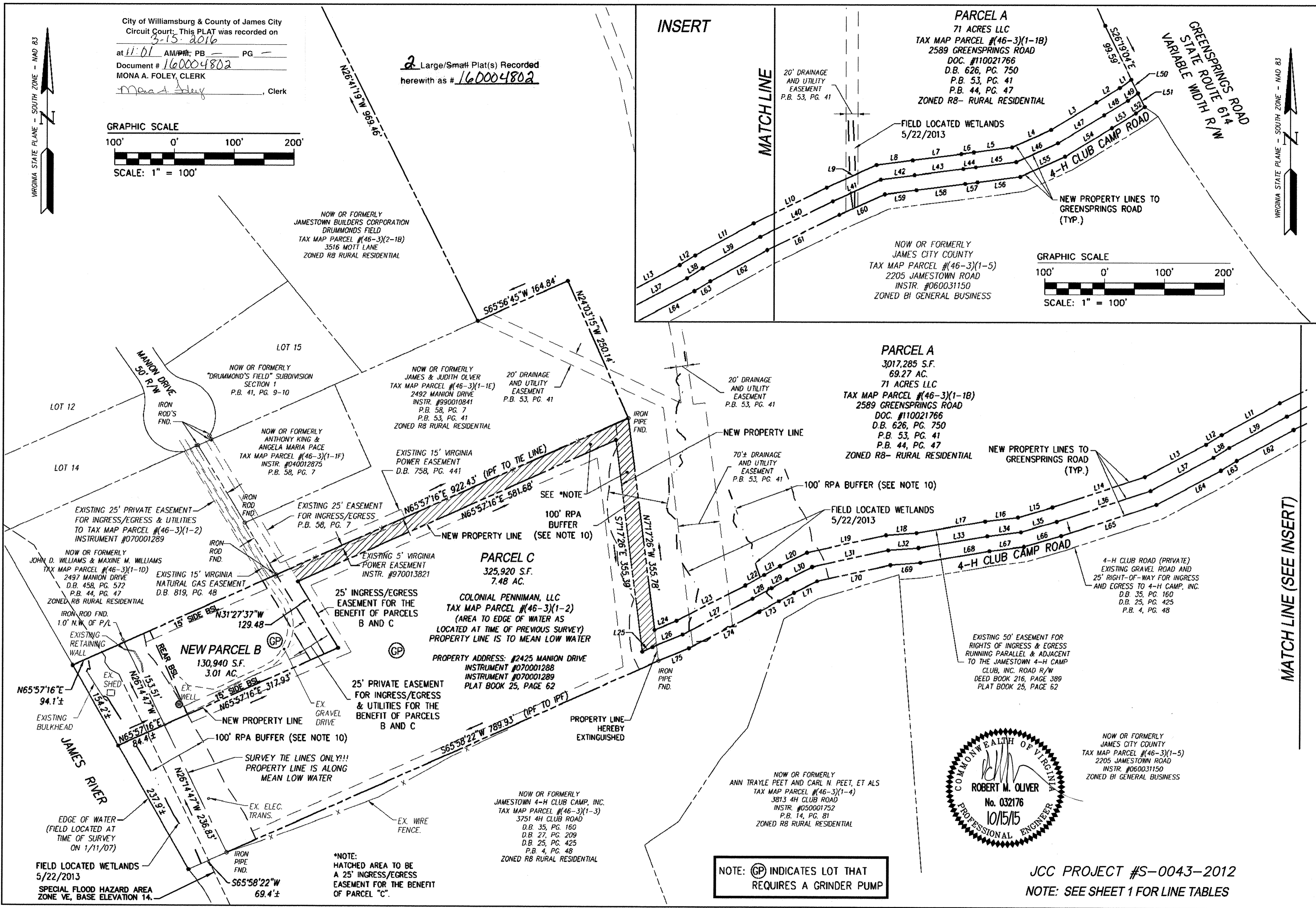
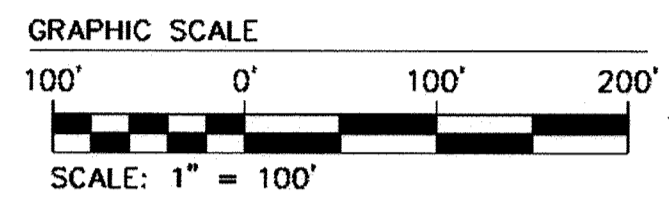
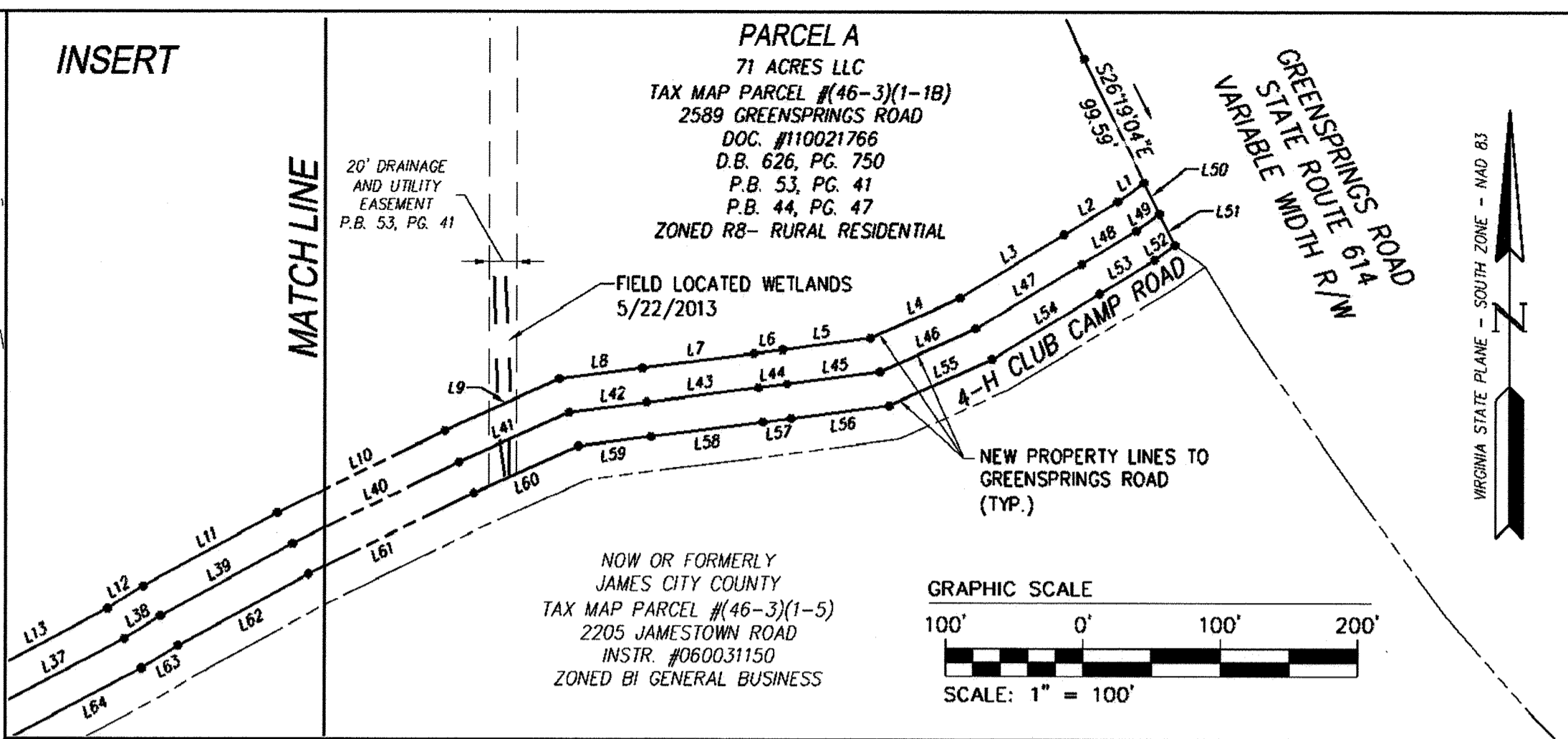
160004802

City of Williamsburg & County of James City  
Circuit Court: This PLAT was recorded on  
3-15-2012  
at 11:01 AM/P.M.; PB \_\_\_\_\_ PG \_\_\_\_\_  
Document # 160004802  
MONA A. FOLEY, CLERK  
Mona A. Foley, Clerk



2 Large/Small Plat(s) Recorded  
herewith as # 160004802

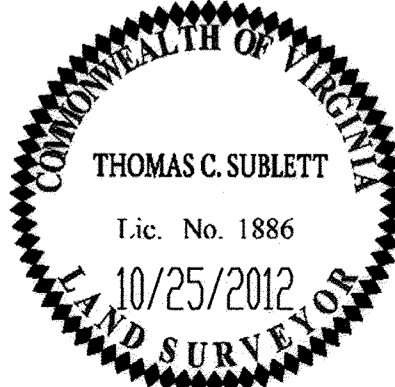
INSERT



NOTE: (GP) INDICATES LOT THAT  
REQUIRES A GRINDER PUMP

JCC PROJECT #S-0043-2012  
NOTE: SEE SHEET 1 FOR LINE TABLES

Rev.	Date	Description	Revised by
4	12-1-15	REVISED PER COMMENTS DATED 12-01-15	
3	11-9-15	REVISED PER COMMENTS DATED 11-05-15	
2	10-12-15	REVISED PER COMMENTS DATED 12-12-14	
1	12-02-14	REVISED PER COUNTY COMMENTS DATED 11-16-2012	JFS



**AES**  
CONSULTING ENGINEERS  
5248 Olde Towne Road, Suite 1  
Williamsburg, Virginia 23188  
Phone: (757) 253-0040  
Fax: (757) 220-8884  
www.aesva.com  
Hampton Roads | Central Virginia | Middle Peninsula

PLAT OF SUBDIVISION AND BOUNDARY LINE EXTINGUISHMENT  
SHOWING PARCEL A, PARCEL B, AND PARCEL C  
STANDING IN THE NAME OF COLONIAL PENNIMAN LLC  
AND 71 ACRES LLC  
JAMESTOWN DISTRICT JAMES CITY COUNTY VIRGINIA

Project Contacts:	
Project Number:	
Scale: 1"=100'	Date: 10/25/12
Sheet Number <b>2 OF 2</b>	