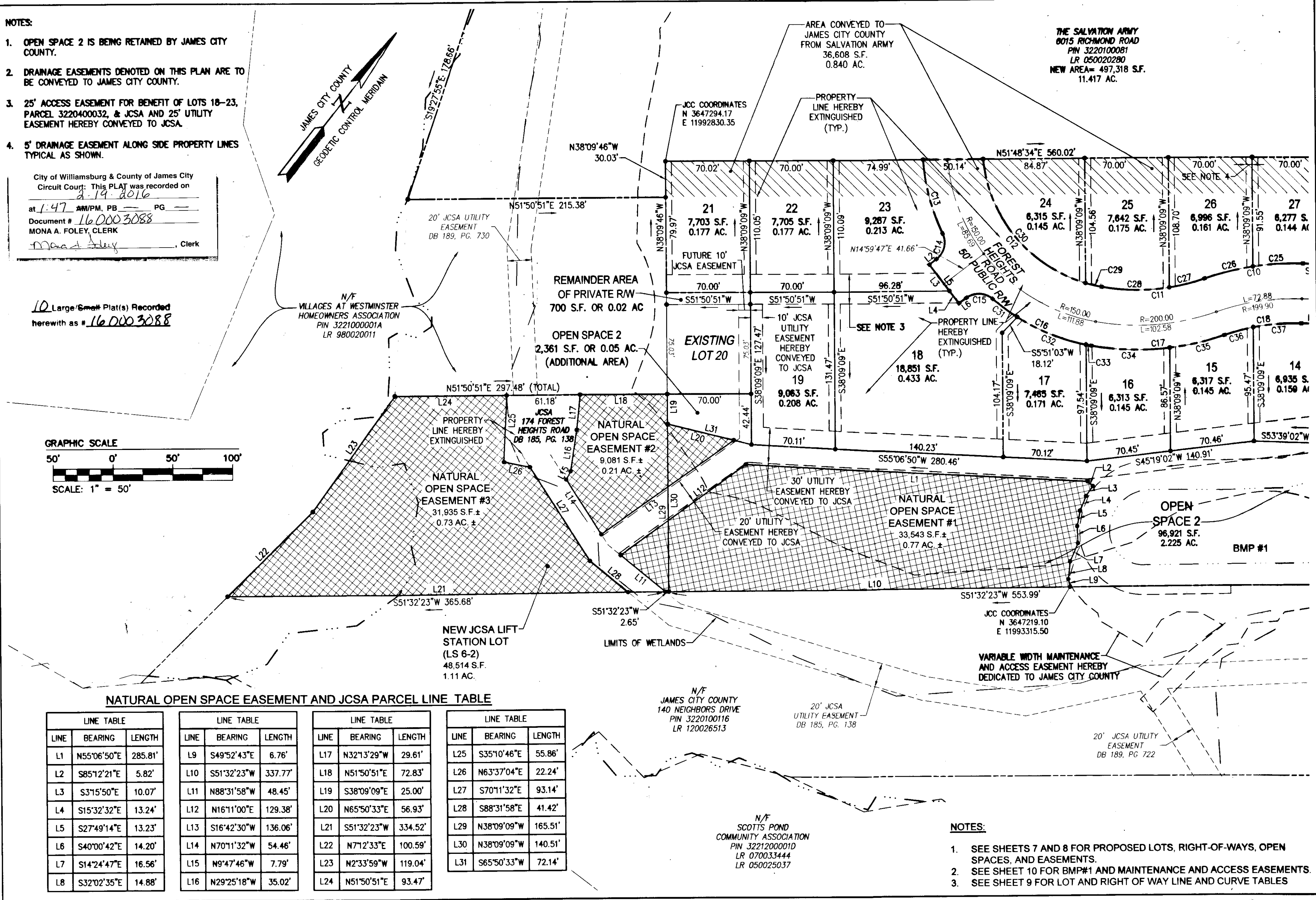
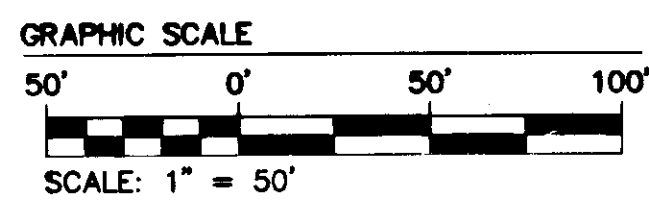


NOTES:

- OPEN SPACE 2 IS BEING RETAINED BY JAMES CITY COUNTY.
- DRAINAGE EASEMENTS DENOTED ON THIS PLAN ARE TO BE CONVEYED TO JAMES CITY COUNTY.
- 25' ACCESS EASEMENT FOR BENEFIT OF LOTS 18-23, PARCEL 3220400032, & JCSA AND 25' UTILITY EASEMENT HEREBY CONVEYED TO JCSA.
- 5' DRAINAGE EASEMENT ALONG SIDE PROPERTY LINES TYPICAL AS SHOWN.

City of Williamsburg & County of James City
 Circuit Court: This PLAT was recorded on
 2-19-2016
 at 1:47 AM/PM, PB PG
 Document # 160003088
 MONA A. FOLEY, CLERK
 Clerk

10 Large/Small Plat(s) Recorded
 herewith as # 160003088



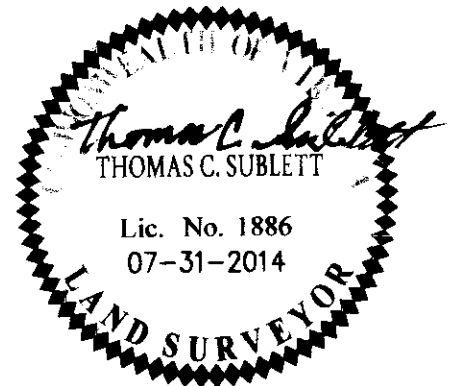
NATURAL OPEN SPACE EASEMENT AND JCSA PARCEL LINE TABLE

LINE	BEARING	LENGTH	LINE	BEARING	LENGTH	LINE	BEARING	LENGTH	LINE	BEARING	LENGTH
L1	N55°06'50"E	285.81'	L9	S49°52'43"E	6.76'	L17	N32°13'29"W	29.61'	L25	S35°10'46"E	55.86'
L2	S85°12'21"E	5.82'	L10	S51°32'23"W	337.77'	L18	N51°50'51"E	72.83'	L26	N63°37'04"E	22.24'
L3	S3°15'50"E	10.07'	L11	N88°31'58"W	48.45'	L19	S38°09'09"E	25.00'	L27	S70°11'32"E	93.14'
L4	S15°32'32"E	13.24'	L12	N16°11'00"E	129.38'	L20	N65°50'33"E	56.93'	L28	S88°31'58"E	41.42'
L5	S27°49'14"E	13.23'	L13	S16°42'30"W	136.06'	L21	S51°32'23"W	334.52'	L29	N38°09'09"W	165.51'
L6	S40°00'42"E	14.20'	L14	N70°11'32"W	54.46'	L22	N7°12'33"E	100.59'	L30	N38°09'09"W	140.51'
L7	S14°24'47"E	16.56'	L15	N9°47'46"W	7.79'	L23	N2°33'59"W	119.04'	L31	S65°50'33"W	72.14'
L8	S32°02'35"E	14.88'	L16	N29°25'18"W	35.02'	L24	N51°50'51"E	93.47'			

NOTES:

- SEE SHEETS 7 AND 8 FOR PROPOSED LOTS, RIGHT-OF-WAYS, OPEN SPACES, AND EASEMENTS.
- SEE SHEET 10 FOR BMP#1 AND MAINTENANCE AND ACCESS EASEMENTS.
- SEE SHEET 9 FOR LOT AND RIGHT OF WAY LINE AND CURVE TABLES

Rev.	Date	Description	Revised By
2	5/07/15	REVISED PER COUNTY COMMENTS	JFS
1	1/14/15	REVISED PER COUNTY COMMENTS	JFS



AES
 CONSULTING ENGINEERS
 5248 Olde Towne Road, Suite 1
 Williamsburg, Virginia 23188
 Phone: (757) 253-0040
 Fax: (757) 220-8994
 www.aesva.com
 Hampton Roads | Central Virginia | Middle Peninsula

PLAT OF BOUNDARY LINE EXTINGUISHMENT, ADJUSTMENT AND SUBDIVISION OF LOTS 10 - 19, 21 - 33, 6015 RICHMOND ROAD AND RIGHT-OF-WAY DEDICATION
 PHASE 2 OF
FOREST HEIGHTS NEIGHBORHOOD
 PREPARED FOR:
JAMES CITY COUNTY HOUSING & COMMUNITY DEVELOPMENT
 POWHATAN DISTRICT JAMES CITY COUNTY VIRGINIA

Project Contacts: TCS/JFS
 Project Number: W10119-E-03
 Scale: NOTED Date: 07-31-2014
 Sheet Number
8 of 10