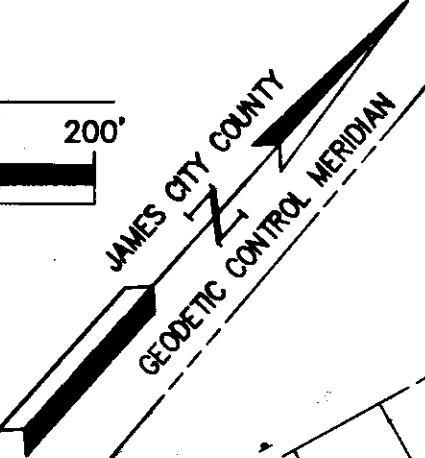
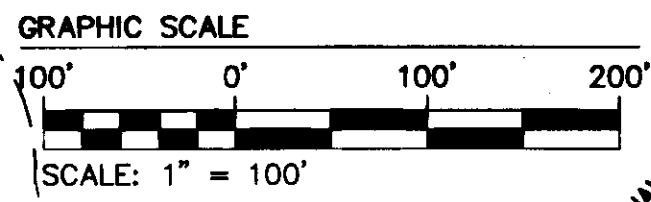


160001776



LINE	BEARING	LENGTH
L1	N56°21'48"E	13.33'
L2	N60°09'43"E	66.43'
L3	N48°34'48"E	22.34'
L4	N25°34'08"E	28.06'
L5	N30°31'37"W	61.00'
L6	S78°10'32"W	37.25'
L7	S73°56'25"W	63.21'
L8	N45°01'58"W	10.84'
L9	N52°44'52"E	56.43'
L10	N3°28'48"E	13.15'
L11	N38°18'29"W	5.33'

LINE	BEARING	LENGTH
L12	N58°06'09"W	11.66'
L13	N31°46'37"E	57.02'
L14	N21°38'56"E	79.75'
L15	N9°27'32"E	21.21'
L16	N86°30'08"E	28.95'
L17	N10°35'17"W	17.37'
L18	N33°34'35"E	31.00'
L19	N7°11'54"E	23.49'
L20	N2°58'19"W	39.43'
L21	N26°52'29"W	39.92'
L22	N38°26'13"E	13.84'

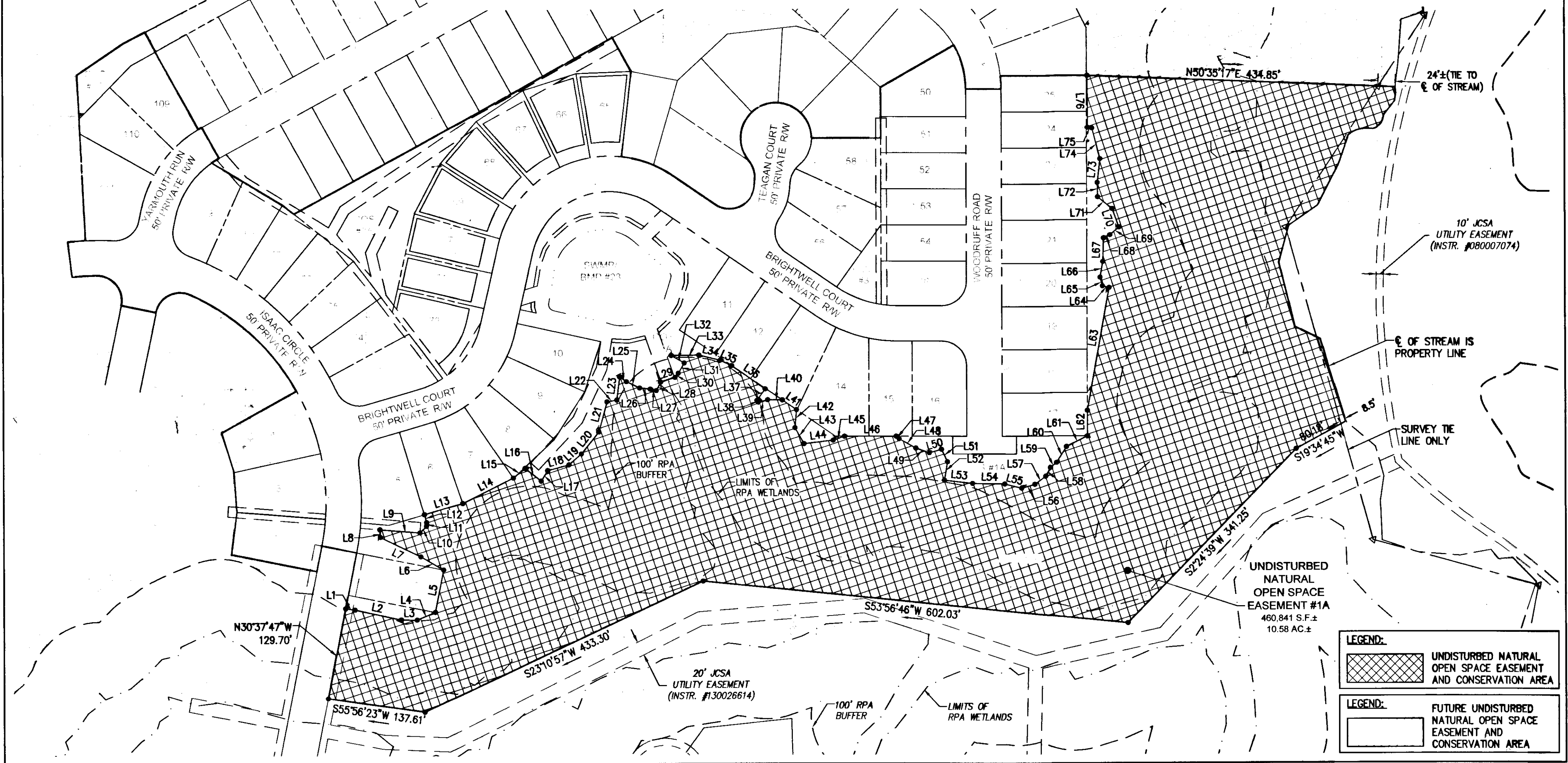
LINE	BEARING	LENGTH
L23	N33°55'21"W	33.02'
L24	N84°40'46"E	11.61'
L25	N73°45'31"E	20.68'
L26	N55°25'50"E	15.21'
L27	N61°42'17"E	8.54'
L28	N14°06'11"W	13.55'
L29	N30°40'18"E	21.14'
L30	N3°54'42"W	7.64'
L31	N11°33'37"W	16.69'
L32	S78°12'48"W	21.24'
L33	N47°36'08"E	38.95'

LINE	BEARING	LENGTH
L34	N61°56'15"E	31.10'
L35	N73°53'47"E	17.66'
L36	N83°03'24"E	57.76'
L37	S6°17'09"E	19.92'
L38	S75°58'21"E	3.14'
L39	N33°36'12"E	13.60'
L40	N48°44'46"E	20.71'
L41	N82°39'49"E	24.19'
L42	S36°57'18"E	25.65'
L43	S71°00'03"E	25.89'
L44	N41°27'26"E	41.52'

LINE	BEARING	LENGTH
L45	N29°00'47"E	16.79'
L46	N48°13'48"E	72.74'
L47	N87°36'06"E	5.39'
L48	N77°37'28"E	27.06'
L49	N67°12'51"E	20.11'
L50	N31°59'56"E	17.77'
L51	S67°20'47"E	19.46'
L52	S32°47'21"E	26.56'
L53	N54°41'17"E	39.86'
L54	N49°11'50"E	45.49'
L55	N62°31'54"E	24.56'

LINE	BEARING	LENGTH
L56	N31°18'58"E	19.38'
L57	N12°14'29"E	19.09'
L58	N12°51'36"W	13.83'
L59	N8°54'41"E	10.92'
L60	N9°29'05"W	26.44'
L61	N21°04'56"E	33.19'
L62	N41°46'12"W	36.10'
L63	N31°38'08"W	175.97'
L64	S61°37'59"W	9.59'
L65	N56°52'57"W	12.76'
L66	N31°37'49"W	22.50'

LINE	BEARING	LENGTH
L67	N39°35'44"W	33.30'
L68	N21°49'29"E	10.07'
L69	N6°52'30"E	16.53'
L70	N61°23'38"W	27.70'
L71	S87°47'21"W	26.31'
L72	N42°57'14"W	20.19'
L73	N35°31'38"W	33.60'
L74	N55°51'17"W	44.95'
L75	S57°00'05"W	6.40'
L76	N41°55'35"W	73.25'



**LEGEND:**

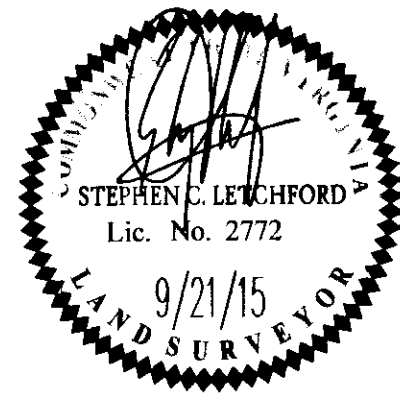
UNDISTURBED NATURAL OPEN SPACE EASEMENT AND CONSERVATION AREA

**LEGEND:**

FUTURE UNDISTURBED NATURAL OPEN SPACE EASEMENT AND CONSERVATION AREA

1	09/21/15	REVISED PER COUNTY COMMENTS	RMS
Rev.	Date	Description	Revised By

City of Williamsburg & County of James City  
 Circuit Court: This PLAT was recorded on  
 9-2-2016  
 at 10:16 AM/PM, PB PG  
 Document # 160001776  
 MONA A. FOLEY, CLERK  
 [Signature] Clerk



7 Large/Small Plat(s) Recorded  
 herewith as # 160001776

**FAES**  
 CONSULTING ENGINEERS  
 Hampton Roads | Central Virginia | Middle Peninsula

614 Moorefield Park Drive  
 Richmond, Virginia 23236-3655  
 Phone: (804) 330-8040  
 Fax: (804) 330-9840  
 www.aesva.com

PLAT OF SUBDIVISION  
 LOTS 1-25, 50-58, 65-79 AND 109-111  
**COLONIAL HERITAGE**  
**PHASE VI - SECTION 1A**  
 OWNER / DEVELOPER: COLONIAL HERITAGE, L.L.C.

STONEHOUSE DISTRICT      JAMES CITY COUNTY      VIRGINIA

Project Contacts: TRS/SCL  
 Project Number: 8881-81A  
 Scale: 1"=100'      Date: 07/24/15  
 Sheet Number  
**3 OF 7**