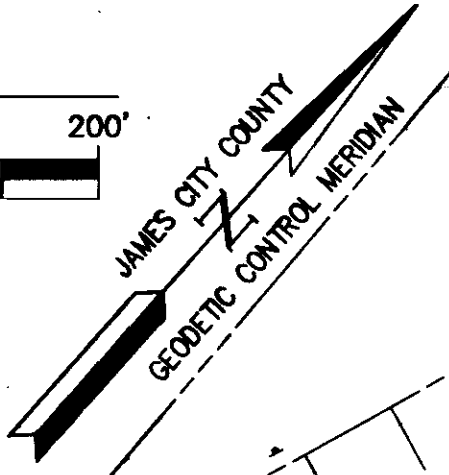
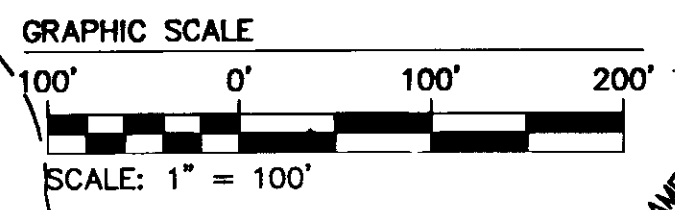


160001776



| CURVE TABLE | | | | | | |
|-------------|------------|---------|---------|---------|---------|---------------|
| CURVE # | DELTA | RADIUS | LENGTH | TANGENT | CHORD | CHORD BEARING |
| B1 | 36°46'45" | 320.00' | 205.41' | 106.39' | 201.90' | N89°27'13"W |
| B2 | 102°08'32" | 35.00' | 62.40' | 43.33' | 54.45' | S21°05'09"W |
| B3 | 102°07'36" | 35.00' | 62.39' | 43.32' | 54.45' | N81°05'10"W |
| B4 | 6°15'22" | 320.00' | 34.94' | 17.49' | 34.92' | S44°43'21"W |
| B5 | 3°50'35" | 370.00' | 24.82' | 12.41' | 24.81' | N43°30'57"E |
| B6 | 1°51'42" | 175.00' | 5.69' | 2.84' | 5.69' | N18°20'52"E |
| B7 | 5°44'35" | 125.00' | 12.53' | 6.27' | 12.52' | S16°24'26"W |

| CURVE TABLE | | | | | | |
|-------------|------------|---------|--------|---------|--------|---------------|
| CURVE # | DELTA | RADIUS | LENGTH | TANGENT | CHORD | CHORD BEARING |
| B8 | 27°51'13" | 160.00' | 77.78' | 39.68' | 77.02' | N68°44'12"E |
| B9 | 119°27'04" | 35.00' | 72.97' | 59.96' | 60.45' | N22°56'17"E |
| B10 | 45°05'57" | 35.00' | 27.55' | 14.53' | 26.84' | N59°20'13"W |
| B12 | 29°42'58" | 125.00' | 64.83' | 33.16' | 64.11' | S56°37'42"E |
| B13 | 6°04'19" | 175.00' | 18.55' | 9.28' | 18.54' | N44°48'22"W |

LEGEND:

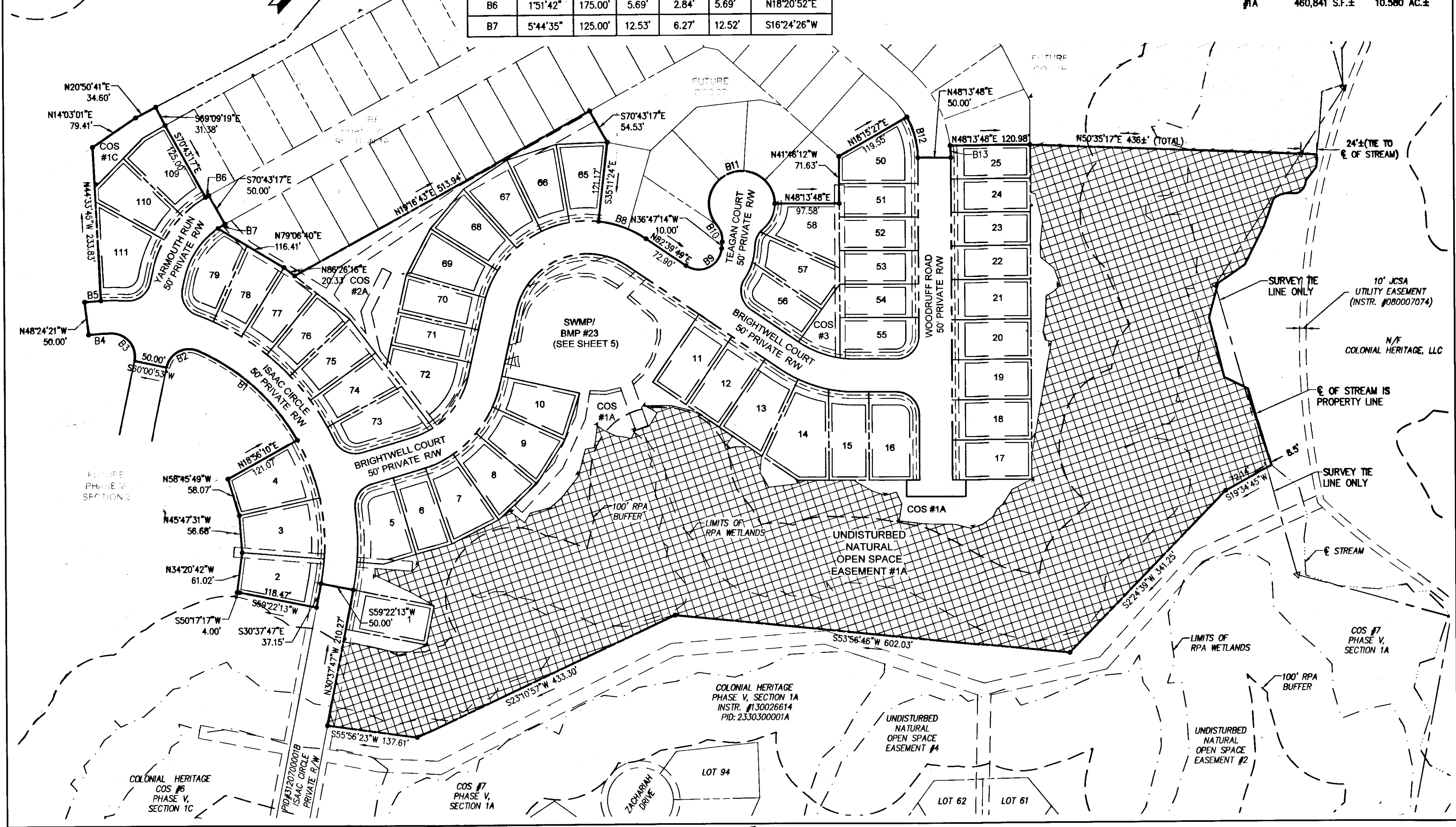
UNDISTURBED NATURAL OPEN SPACE EASEMENT AND CONSERVATION AREA

LEGEND:

FUTURE UNDISTURBED NATURAL OPEN SPACE EASEMENT AND CONSERVATION AREA

UNDISTURBED NATURAL OPEN SPACE EASEMENT AREA TABULATION

#1A 460,841 S.F.± 10.580 AC.±



City of Williamsburg & County of James City Circuit Court: This PLAT was recorded on 8-3-2016

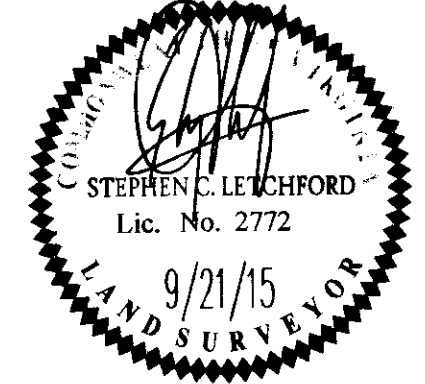
at 10:16 AM/PW, PB PG

Document # 160001776

MONA A. FOLEY, CLERK

Mona A. Foley Clerk

| Rev. | Date | Description | Revised By |
|------|----------|-----------------------------|------------|
| 1 | 09/21/15 | REVISED PER COUNTY COMMENTS | PAWS |



7 Large/Small Plat(s) Recorded herewith as # 160001776

AES CONSULTING ENGINEERS

614 Moorefield Park Drive
Richmond, Virginia 23236-3655
Phone: (804) 330-8040
Fax: (804) 330-9840
www.aesva.com

Hampton Roads | Central Virginia | Middle Peninsula

PLAT OF SUBDIVISION
LOTS 1-25, 50-58, 65-79 AND 109-111

**COLONIAL HERITAGE
PHASE VI - SECTION 1A**

OWNER / DEVELOPER: COLONIAL HERITAGE, L.L.C.

STONEHOUSE DISTRICT JAMES CITY COUNTY VIRGINIA

Project Contacts: TRS/SCL

Project Number: 8881-61A

Scale: 1"=100' Date: 07/24/15

Sheet Number

2 OF 7