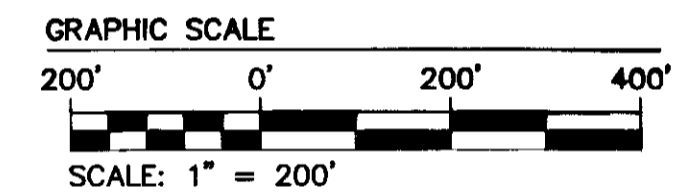
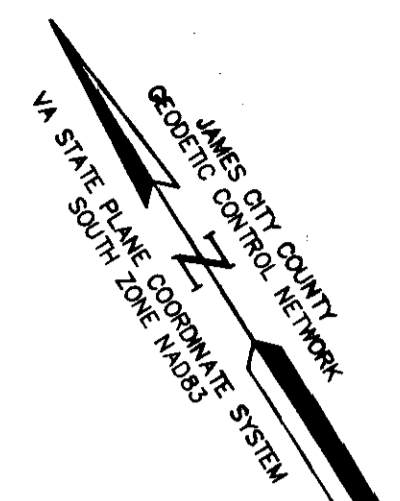
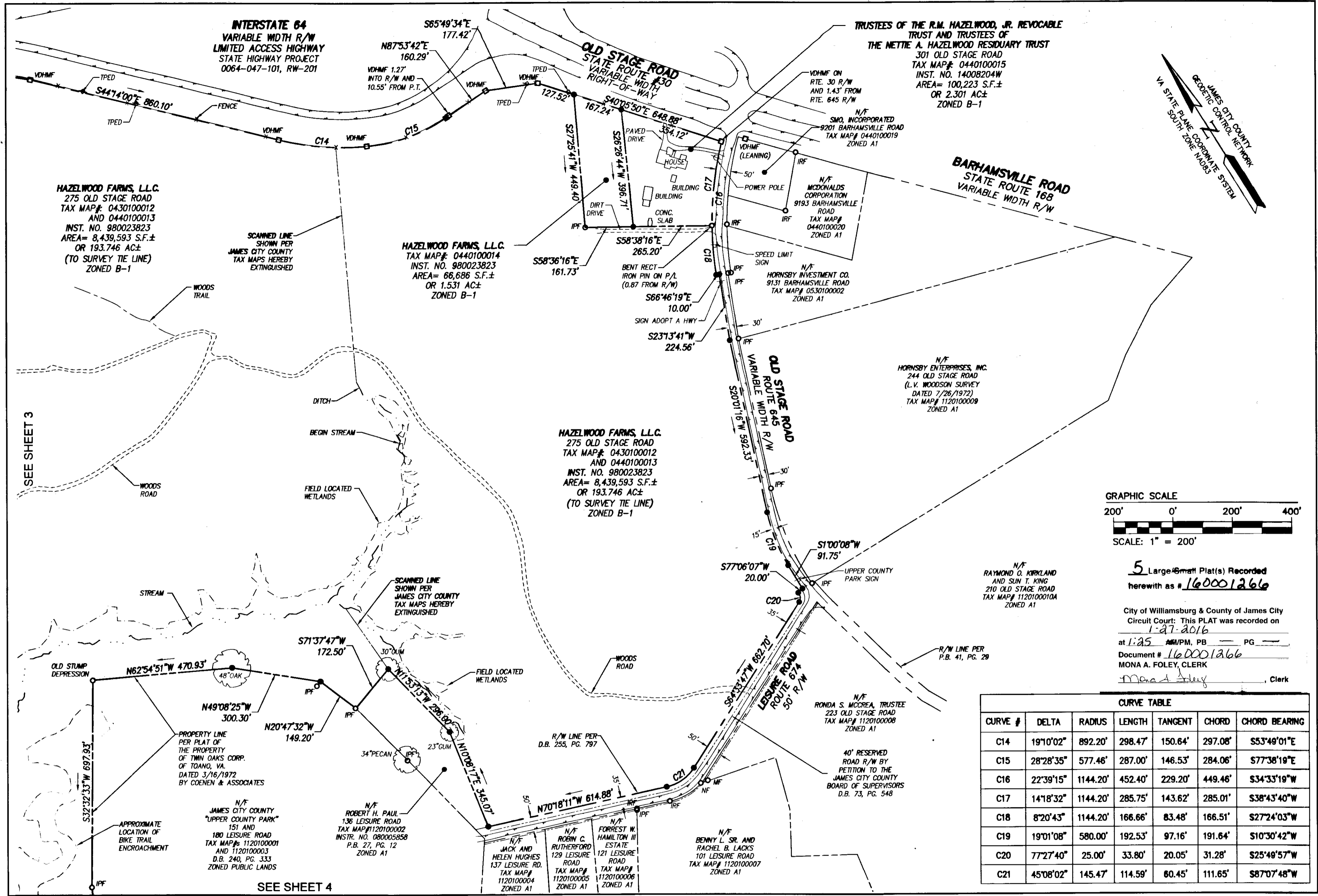


160001266



5 Large 6" x 6" Plat(s) Recorded herewith as # 160001266

City of Williamsburg & County of James City  
 Circuit Court: This PLAT was recorded on  
 1-27-2016  
 at 1:25 AM/PM, PB PG  
 Document # 160001266  
 MONA A. FOLEY, CLERK  
*Mona A. Foley*, Clerk

CURVE TABLE						
CURVE #	DELTA	RADIUS	LENGTH	TANGENT	CHORD	CHORD BEARING
C14	19°10'02"	892.20'	298.47'	150.64'	297.08'	S53°49'01"E
C15	28°28'35"	577.46'	287.00'	146.53'	284.06'	S77°38'19"E
C16	22°39'15"	1144.20'	452.40'	229.20'	449.46'	S34°33'19"W
C17	14°18'32"	1144.20'	285.75'	143.62'	285.01'	S38°43'40"W
C18	8°20'43"	1144.20'	166.66'	83.48'	166.51'	S27°24'03"W
C19	19°01'08"	580.00'	192.53'	97.16'	191.64'	S10°30'42"W
C20	77°27'40"	25.00'	33.80'	20.05'	31.28'	S25°49'57"W
C21	45°08'02"	145.47'	114.59'	60.45'	111.65'	S87°07'48"W

Rev.	Date	Description	Revised By



5248 Old Towne Road, Suite 1  
 Williamsburg, Virginia 23188  
 Phone: (757) 253-0040  
 Fax: (757) 220-8994  
 www.aesva.com

Hampton Roads | Central Virginia | Middle Peninsula

**PLAT OF SURVEY**  
**EIGHT PARCELS OF LAND CONTAINING A TOTAL AREA OF 407.236 ACRES±**  
 PREPARED FOR HAZELWOOD FARMS, L.L.C.  
 A VIRGINIA CORPORATION  
 STONEHOUSE DISTRICT | JAMES CITY COUNTY | VIRGINIA

Project Contacts: SCL / JFB  
 Project Number: W10325-00  
 Scale: 1"=200' | Date: 1-04-2016  
 Sheet Number  
**5 OF 5**