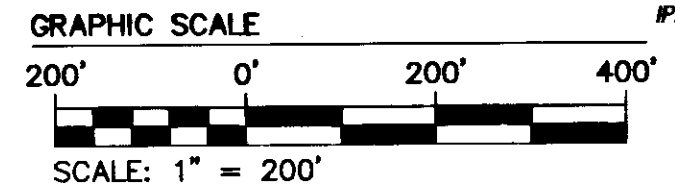
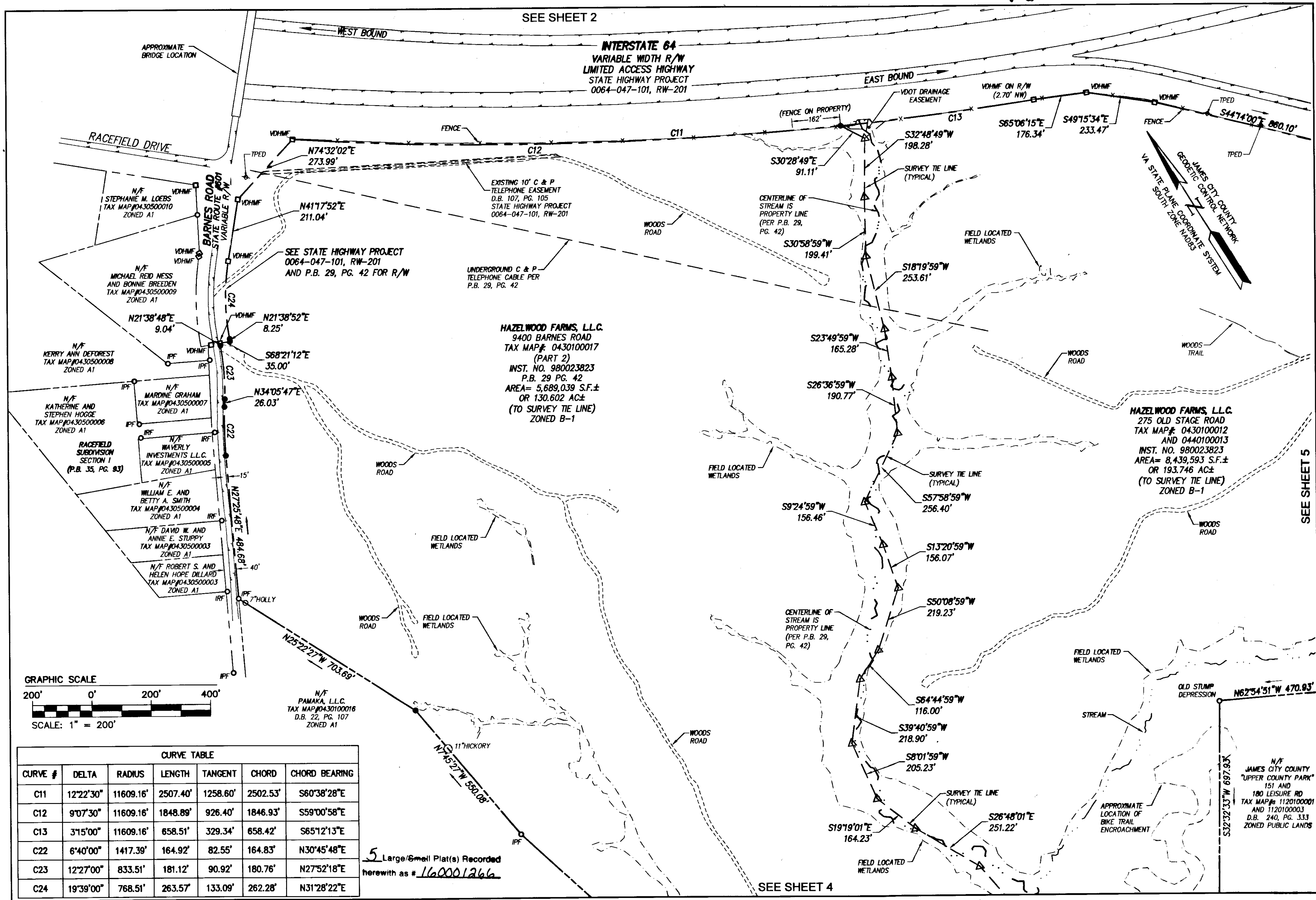


160001266

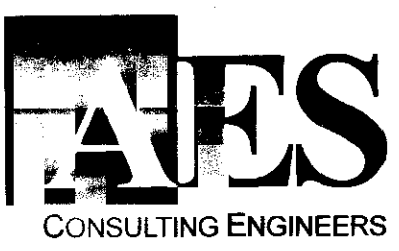
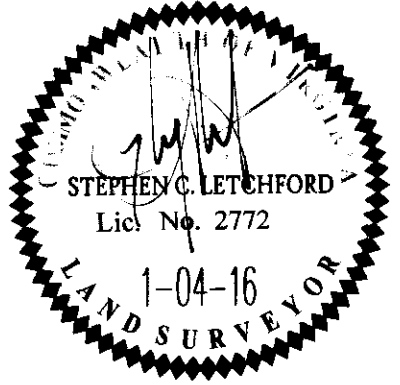


CURVE TABLE						
CURVE #	DELTA	RADIUS	LENGTH	TANGENT	CHORD	CHORD BEARING
C11	12°22'30"	11609.16'	2507.40'	1258.60'	2502.53'	S60°38'28"E
C12	9°07'30"	11609.16'	1848.89'	926.40'	1846.93'	S59°00'58"E
C13	3°15'00"	11609.16'	658.51'	329.34'	658.42'	S65°12'13"E
C22	6°40'00"	1417.39'	164.92'	82.55'	164.83'	N30°45'48"E
C23	12°27'00"	833.51'	181.12'	90.92'	180.76'	N27°52'18"E
C24	19°39'00"	768.51'	263.57'	133.09'	262.28'	N31°28'22"E

5 Large/Small Plat(s) Recorded herewith as # 160001266

City of Williamsburg & County of James City
 Circuit Court: This PLAT was recorded on
 1-27-2016
 at 1:25 AM/PM, PG. _____
 Document # 160001266
 MONA A. FOLEY, CLERK
 _____ Clerk

Rev.	Date	Description	Revised By



5248 Olde Towne Road, Suite 1
 Williamsburg, Virginia 23188
 Phone: (757) 253-0040
 Fax: (757) 220-8994
 www.aesva.com

Hampton Roads | Central Virginia | Middle Peninsula

PLAT OF SURVEY
 EIGHT PARCELS OF LAND CONTAINING A TOTAL AREA
 OF 407.236 ACRES±
 PREPARED FOR HAZELWOOD FARMS, L.L.C.
 A VIRGINIA CORPORATION

Project Contacts: SCL / JFS
 Project Number: W10325-00
 Scale: 1"=200' Date: 1-04-2016
 Sheet Number
3 OF 5