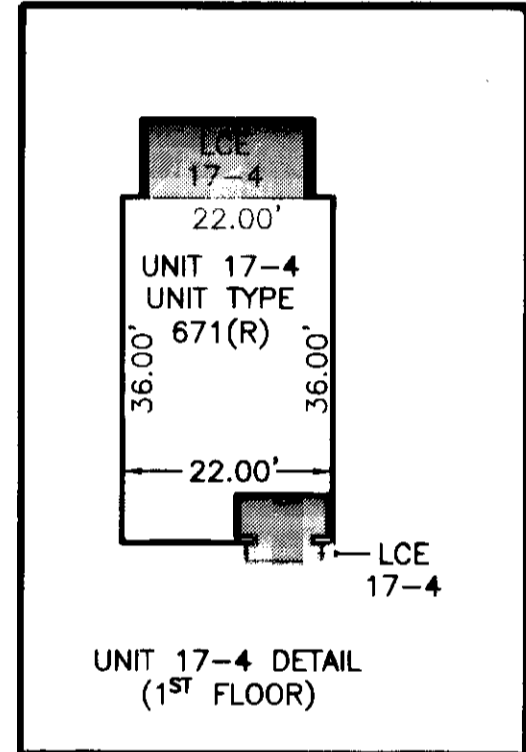
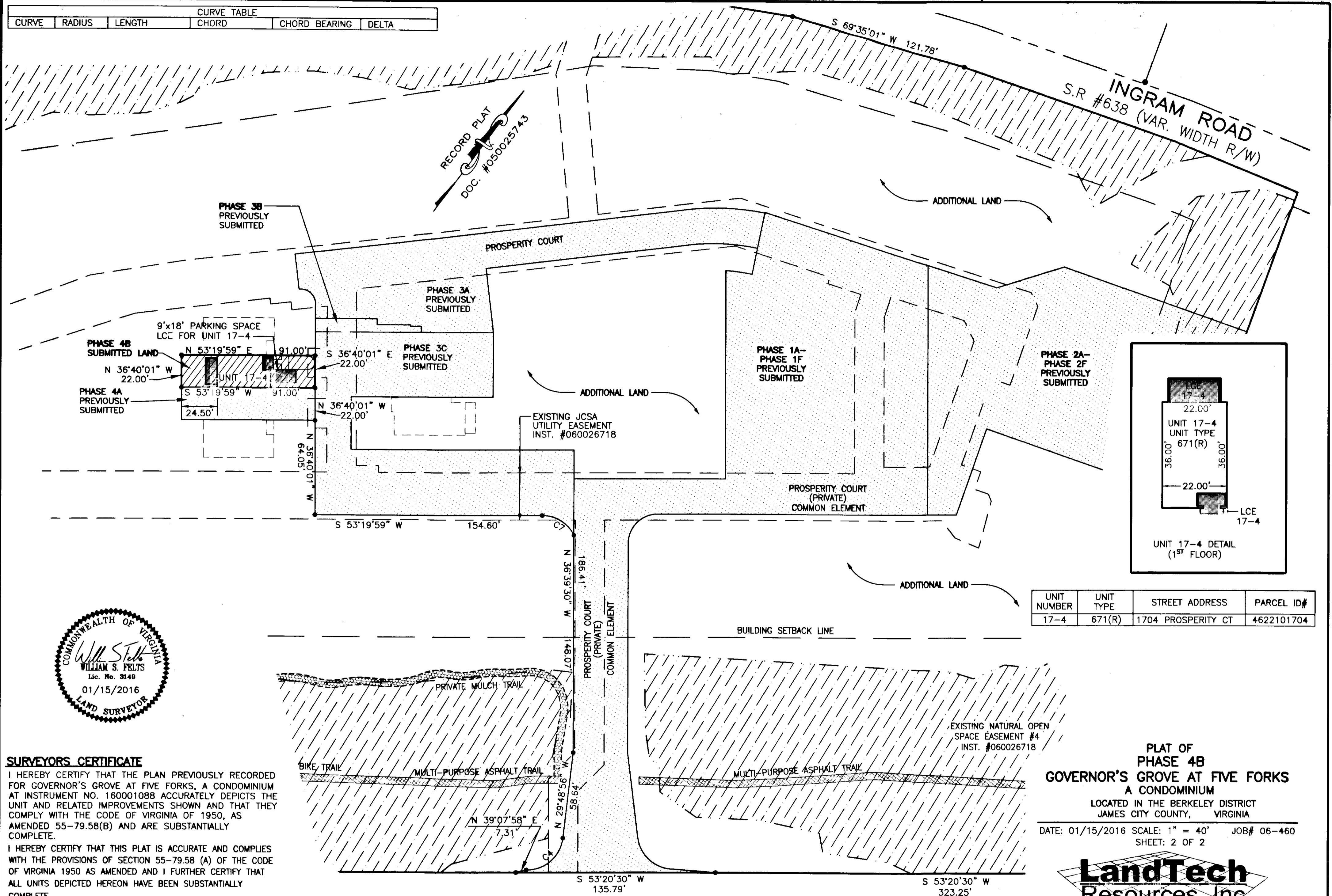
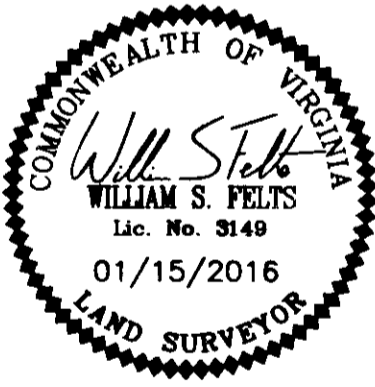


160001172

CURVE TABLE					
CURVE	RADIUS	LENGTH	CHORD	CHORD BEARING	DELTA



UNIT NUMBER	UNIT TYPE	STREET ADDRESS	PARCEL ID#
17-4	671(R)	1704 PROSPERITY CT	4622101704



**SURVEYORS CERTIFICATE**  
 I HEREBY CERTIFY THAT THE PLAN PREVIOUSLY RECORDED FOR GOVERNOR'S GROVE AT FIVE FORKS, A CONDOMINIUM AT INSTRUMENT NO. 160001088 ACCURATELY DEPICTS THE UNIT AND RELATED IMPROVEMENTS SHOWN AND THAT THEY COMPLY WITH THE CODE OF VIRGINIA OF 1950, AS AMENDED 55-79.58(B) AND ARE SUBSTANTIALLY COMPLETE.  
 I HEREBY CERTIFY THAT THIS PLAT IS ACCURATE AND COMPLIES WITH THE PROVISIONS OF SECTION 55-79.58 (A) OF THE CODE OF VIRGINIA 1950 AS AMENDED AND I FURTHER CERTIFY THAT ALL UNITS DEPICTED HEREON HAVE BEEN SUBSTANTIALLY COMPLETE.

*William S. Felts*  
 WILLIAM S. FELTS LIC. #3149  
 DATE 01/15/16

JOHN TYLER HIGHWAY  
 STATE ROUTE #5  
 (VARIABLE WIDTH PUBLIC R/W)

City of Williamsburg & County of James City  
 Circuit Court: This PLAT was recorded on 1-26-2016 at 1:36 AM/PM, PB PG Document # 160001172 MONA A. FOLEY, CLERK

2 Large/Small Prints  
 herewith as 160001172

PLAT OF  
 PHASE 4B  
 GOVERNOR'S GROVE AT FIVE FORKS  
 A CONDOMINIUM  
 LOCATED IN THE BERKELEY DISTRICT  
 JAMES CITY COUNTY, VIRGINIA  
 DATE: 01/15/2016 SCALE: 1" = 40' JOB# 06-460  
 SHEET: 2 OF 2

**LandTech Resources, Inc.**  
 Surveying • Engineering • GPS  
 3925 Midlands Road, Williamsburg, VA 23188  
 Phone: (757) 565-1677 Fax: (757) 565-0782  
 web: landtechresources.com