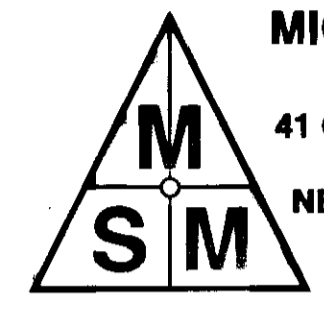


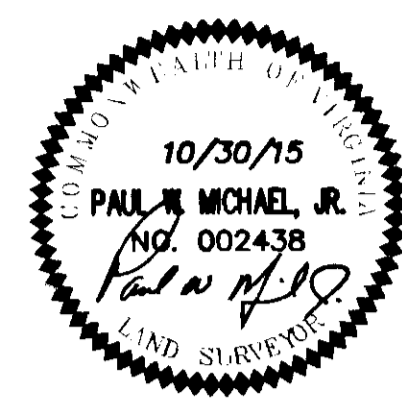
160000079

PLAT OF SUBDIVISION
SHOWING
LOTS 1, 8, 9, 12,
13, 14 &
NATURAL OPEN SPACE

JAMES CITY COUNTY, VIRGINIA
DATE: OCTOBER 30, 2015 SCALE: 1"=40'
SHEET 2 OF 3
PROJECT NUMBER: 13-070
REVISED: DECEMBER 10, 2015



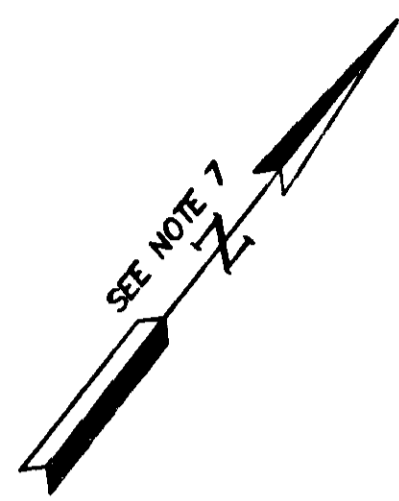
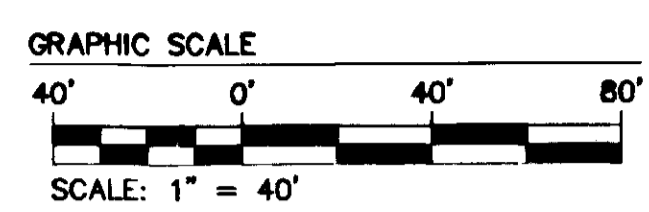
**MICHAEL SURVEYING
& MAPPING, P.C.**
41 OLD OYSTER POINT ROAD
SUITE B
NEWPORT NEWS, VA. 23602
TEL 757.873.1762
FAX 757.873.1772



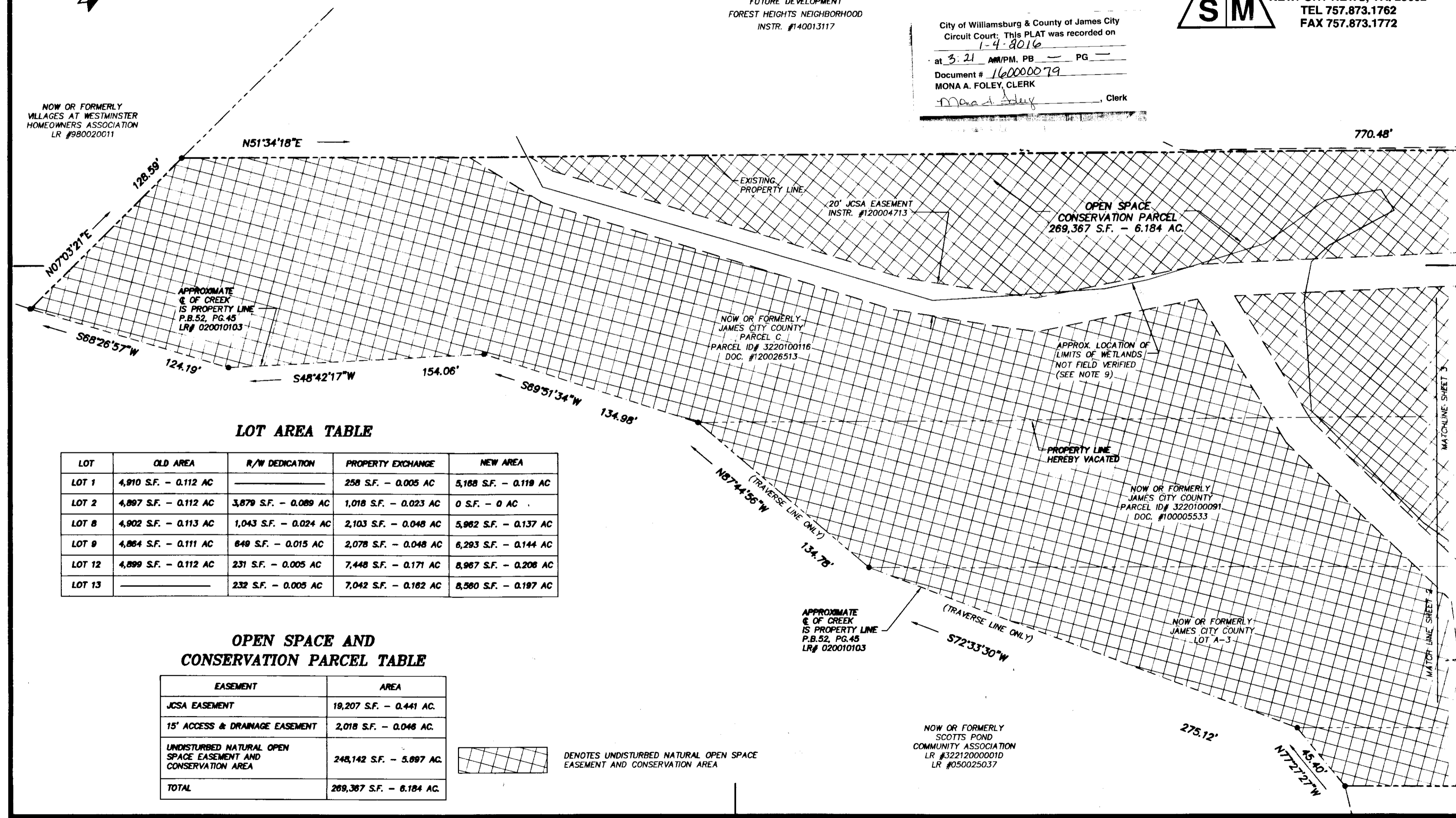
3 Large Small Plat(s) Recorded
herewith as # 160000079

City of Williamsburg & County of James City
Circuit Court: This PLAT was recorded on
1-4-2016
at 3:21 AM/PM. PB PG
Document # 160000079
MONA A. FOLEY, CLERK
Mona Foley, Clerk

FUTURE DEVELOPMENT
FOREST HEIGHTS NEIGHBORHOOD
INSTR. #140013117



NOW OR FORMERLY
VILLAGES AT WESTMINSTER
HOMEOWNERS ASSOCIATION
LR #980020011



LOT AREA TABLE

LOT	OLD AREA	R/W DEDICATION	PROPERTY EXCHANGE	NEW AREA
LOT 1	4,910 S.F. - 0.112 AC		258 S.F. - 0.005 AC	5,168 S.F. - 0.119 AC
LOT 2	4,897 S.F. - 0.112 AC	3,879 S.F. - 0.089 AC	1,018 S.F. - 0.023 AC	0 S.F. - 0 AC
LOT 8	4,902 S.F. - 0.113 AC	1,043 S.F. - 0.024 AC	2,103 S.F. - 0.048 AC	5,962 S.F. - 0.137 AC
LOT 9	4,864 S.F. - 0.111 AC	849 S.F. - 0.019 AC	2,078 S.F. - 0.046 AC	6,293 S.F. - 0.144 AC
LOT 12	4,899 S.F. - 0.112 AC	231 S.F. - 0.005 AC	7,448 S.F. - 0.171 AC	8,967 S.F. - 0.206 AC
LOT 13		232 S.F. - 0.005 AC	7,042 S.F. - 0.162 AC	8,560 S.F. - 0.197 AC

OPEN SPACE AND
CONSERVATION PARCEL TABLE

EASEMENT	AREA
JCSA EASEMENT	19,207 S.F. - 0.441 AC
15' ACCESS & DRAINAGE EASEMENT	2,018 S.F. - 0.046 AC
UNDISTURBED NATURAL OPEN SPACE EASEMENT AND CONSERVATION AREA	248,142 S.F. - 5.697 AC
TOTAL	269,367 S.F. - 6.184 AC

DENOTES UNDISTURBED NATURAL OPEN SPACE EASEMENT AND CONSERVATION AREA

NOW OR FORMERLY
SCOTTS POND
COMMUNITY ASSOCIATION
LR #3221200001D
LR #050025037