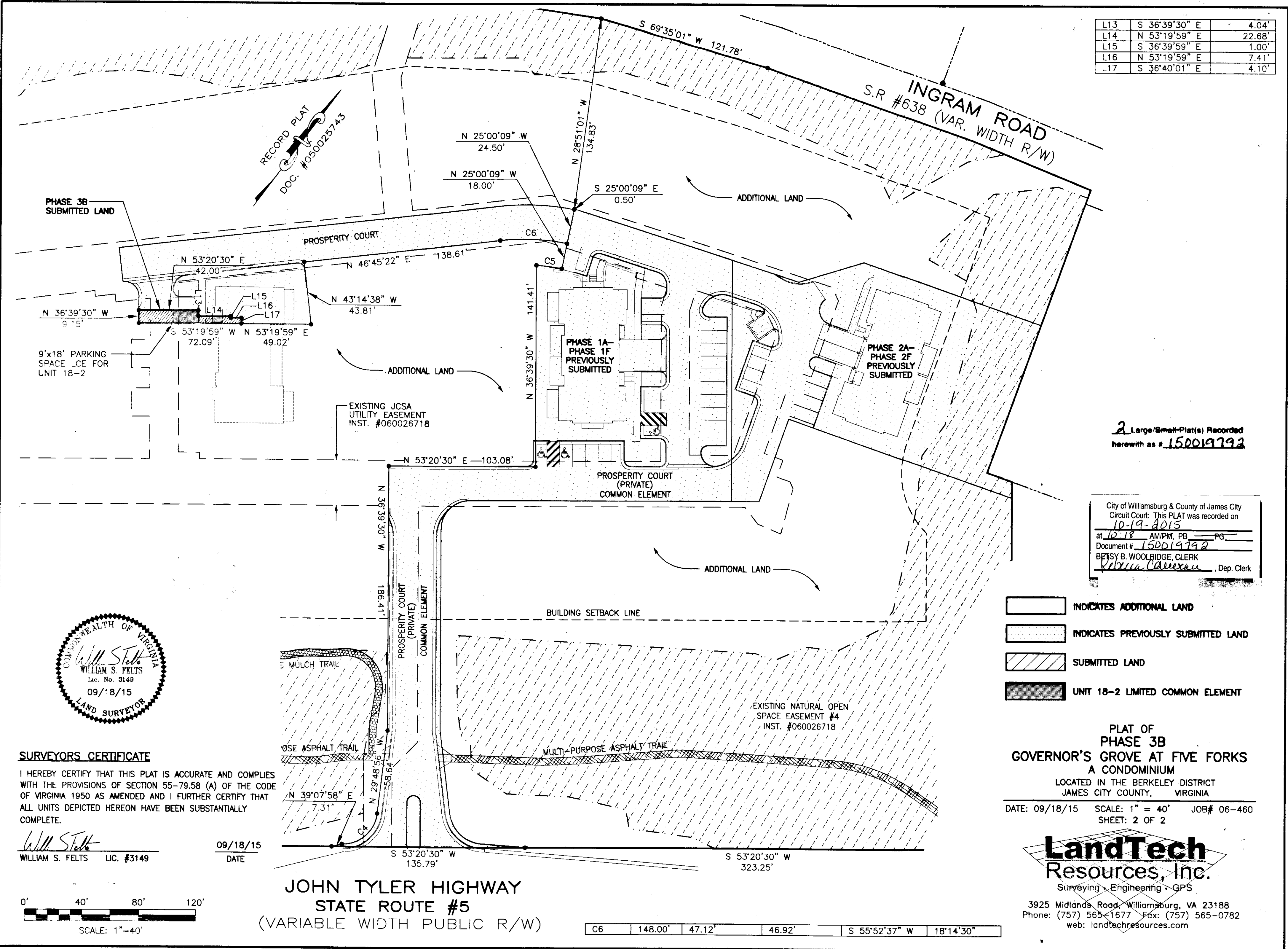


150019792

L13	S 36°39'30" E	4.04'
L14	N 53°19'59" E	22.68'
L15	S 36°39'59" E	1.00'
L16	N 53°19'59" E	7.41'
L17	S 36°40'01" E	4.10'



2 Large/Small-Plat(s) Recorded herewith as # 150019792

City of Williamsburg & County of James City
 Circuit Court: This PLAT was recorded on
 10-19-2015
 at 10:18 AM/PM, PB PG
 Document # 150019792
 BETSY B. WOOLRIDGE, CLERK
 Victoria Cameron, Dep. Clerk

- INDICATES ADDITIONAL LAND
- INDICATES PREVIOUSLY SUBMITTED LAND
- SUBMITTED LAND
- UNIT 18-2 LIMITED COMMON ELEMENT

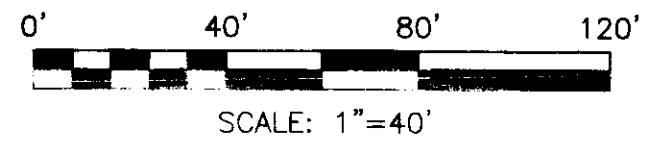
PLAT OF
 PHASE 3B
 GOVERNOR'S GROVE AT FIVE FORKS
 A CONDOMINIUM
 LOCATED IN THE BERKELEY DISTRICT
 JAMES CITY COUNTY, VIRGINIA
 DATE: 09/18/15 SCALE: 1" = 40' JOB# 06-460
 SHEET: 2 OF 2

LandTech
 Resources, Inc.
 Surveying • Engineering • GPS
 3925 Midlands Road, Williamsburg, VA 23188
 Phone: (757) 565-1677 Fax: (757) 565-0782
 web: landtechresources.com



SURVEYORS CERTIFICATE
 I HEREBY CERTIFY THAT THIS PLAT IS ACCURATE AND COMPLIES WITH THE PROVISIONS OF SECTION 55-79.58 (A) OF THE CODE OF VIRGINIA 1950 AS AMENDED AND I FURTHER CERTIFY THAT ALL UNITS DEPICTED HEREON HAVE BEEN SUBSTANTIALLY COMPLETE.

William S. Felts
 WILLIAM S. FELTS LIC. #3149
 09/18/15
 DATE



JOHN TYLER HIGHWAY
 STATE ROUTE #5
 (VARIABLE WIDTH PUBLIC R/W)

C6	148.00'	47.12'	46.92'	S 55°52'37" W	18°14'30"
----	---------	--------	--------	---------------	-----------