

150017978

CONSERVATION EASEMENT PLAT

FOR NATURAL OPEN SPACE

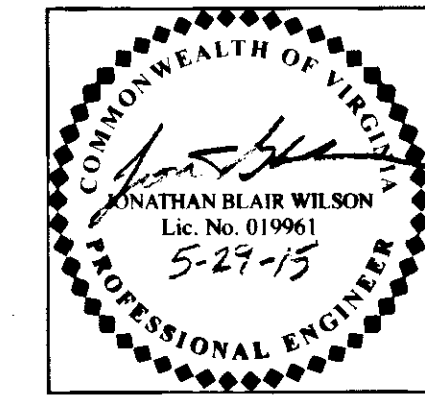
ON PROPERTY STANDING IN THE NAME OF CATHOLIC DIOCESE OF RICHMOND BEING TAX PARCEL No. 3830100018 KNOWN AS

SAINT BEDE CATHOLIC CHURCH 3686 IRONBOUND ROAD JAMESTOWN MAGISTERIAL DISTRICT JAME CITY COUNTY, VIRGINIA

DATE: MAY 29, 2015 SCALE: 1" = 200'

SHEET 1 OF 1 PREPARED BY:

WILSON ENGINEERS, LLC CIVIL & ENVIRONMENTAL ENGINEERING 3560 KING WILLIAM AVENUE P.O. BOX 1269 WEST POINT, VIRGINIA 23181 (804) 843-9744



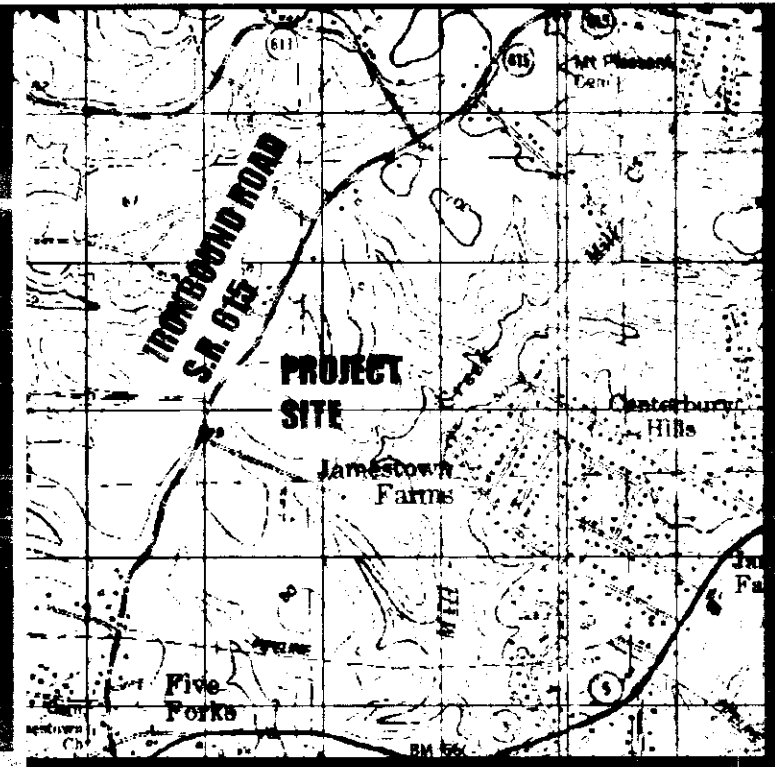
GENERAL NOTES:

- THIS PLAT HEREBY MODIFIES AND AMENDS THE CONSERVATION EASEMENT FOR NATURAL OPEN SPACE AS SHOWN ON THAT PLAT RECORDED ON AUGUST 17, 2005 WITH INSTRUMENT No. 050019008 IN THE CITY OF WILLIAMSBURG AND JAMES CITY COUNTY CIRCUIT COURT CLERK'S OFFICE
- FORMER CONSERVATION EASEMENT AREA = 21.5 ACRES +/-
- NEW CONSERVATION EASEMENT AREA = 19.822 ACRES +/-
- AREA OF CONSERVATION EASEMENT VACATED = 1.678 ACRES +/-
- REFERENCES:  
INSTRUMENT No. 050019008  
INSTRUMENT No. 010019411  
PLAT BOOK 72, PAGE 85

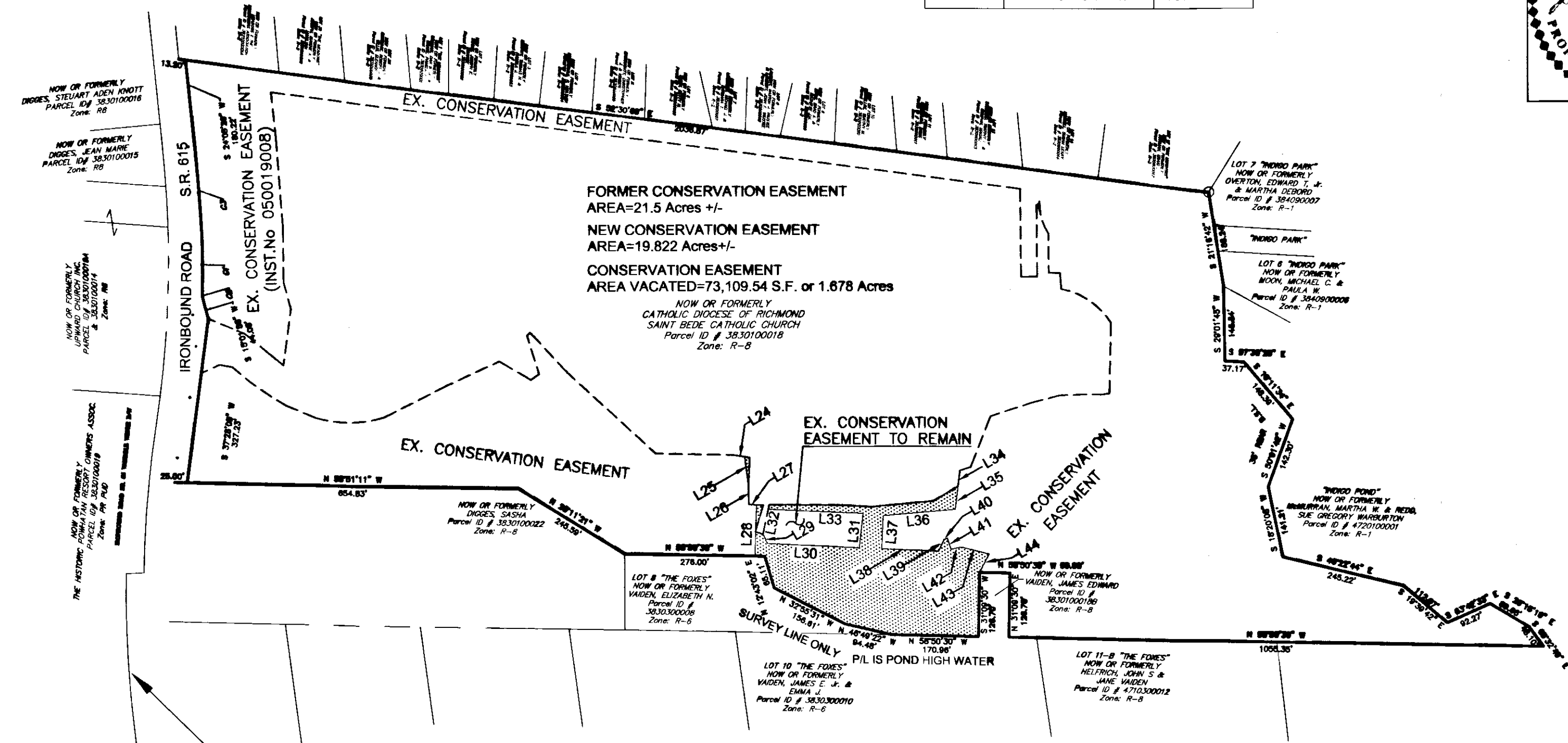
LEGEND

- CONSERVATION EASEMENT AREA VACATED
- PROPERTY LINE
- EXISTING CONSERVATION EASEMENT
- NEW CONSERVATION EASEMENT

NUMBER	BEARING	DISTANCE
L24	S 50°16'55" E	21.04'
L25	S 22°19'07" W	60.51'
L26	S 29°03'47" W	34.12'
L27	S 56°29'53" E	15.24'
L28	S 31°51'19" W	101.27'
L29	S 05°32'03" W	20.11'
L30	S 57°15'29" E	182.40'
L31	N 36°19'12" E	68.18'
L32	S 42°16'15" W	49.95'
L33	N 57°32'11" W	187.58'
L34	S 37°13'33" W	31.66'
L35	S 37°14'40" W	46.41'
L36	N 65°01'03" W	142.89'
L37	S 32°36'04" W	65.00'
L38	S 57°23'56" E	112.35'
L39	N 53°51'40" E	25.59'
L40	S 76°20'04" E	7.60'
L41	S 12°13'38" W	22.70'
L42	S 72°19'00" E	20.77'
L43	S 46°06'48" E	56.24'
L44	S 57°31'54" W	40.75'



VICINITY MAP SCALE: 1" = 2000'



PROJECT BENCHMARK  
GEODETTIC CONTROL MONUMENT STA-321-RESET  
EASTING 3624001.5890  
ELEVATION 78.72  
PROJECT CONTROL POINT No. 3000

NUMBER	DELTA ANGLE	RADIUS	ARC LENGTH	TANGENT	CHORD LENGTH	CHORD BEARING
C1	05°03'39"	1329.79	117.46	58.77	117.42	N 29°40'33" E
C2	10°29'54"	33.83	6.20	3.11	6.19	S 26°55'49" W
C3	02°55'00"	3297.43	167.86	83.95	167.84	N 25°41'14" E

Large/Small Plat(s) Recorded herewith as # 150017978

City of Williamsburg & County of James City Circuit Court: This PLAT was recorded on 9-16-2015 at 1:31 AM/PM, PG- Document # 150017978 BETSY B. WOOLRIDGE, CLERK