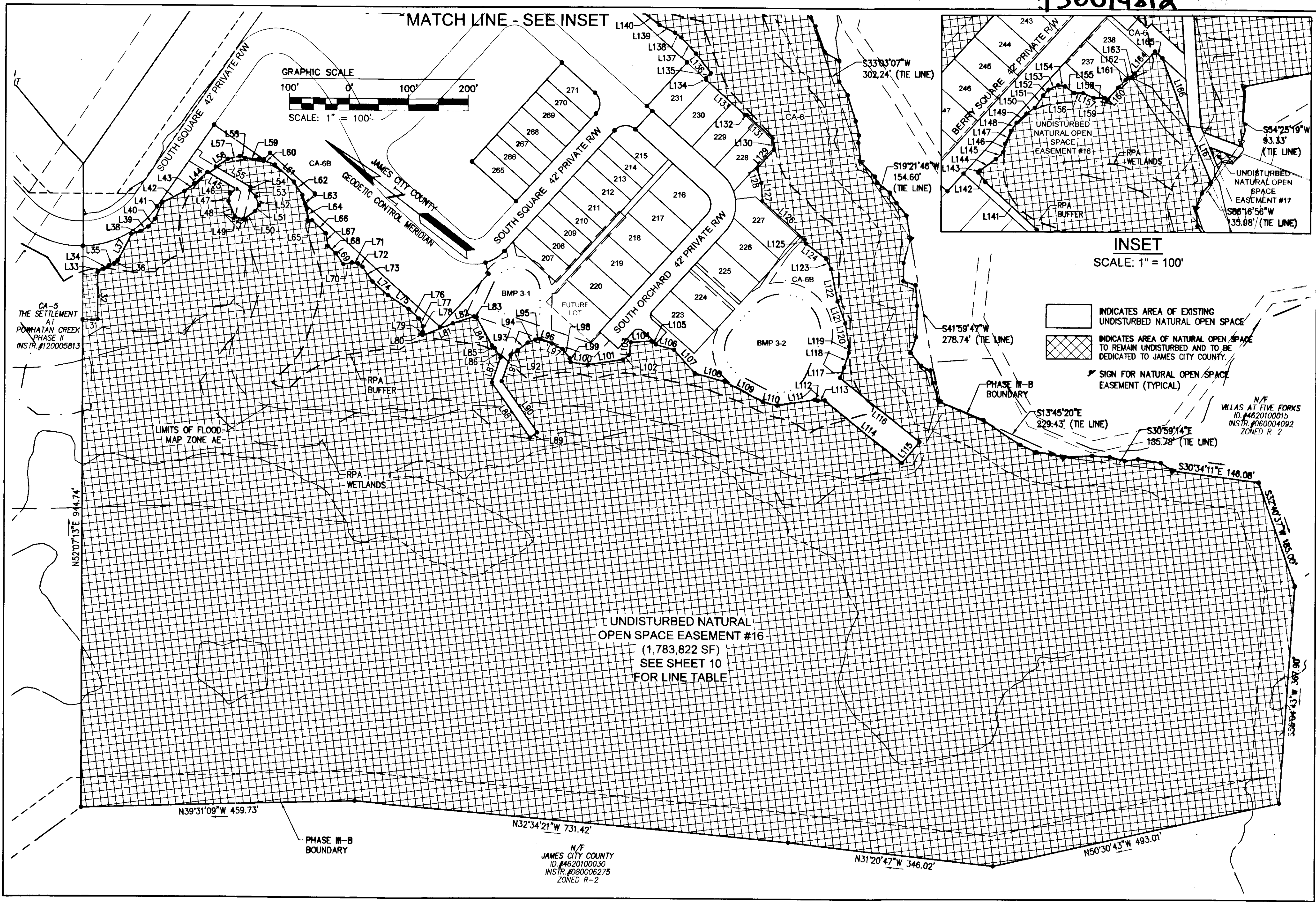
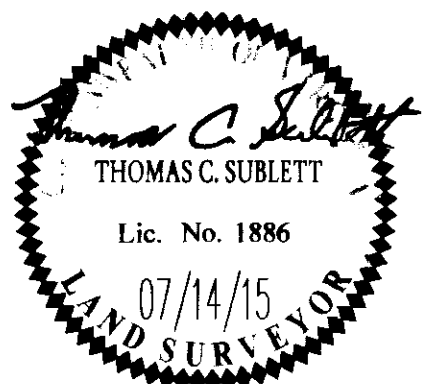


150014812



City of Williamsburg & County of James City		
Circuit Court. This PLAT was recorded on		
at <u>2:19</u> <u>July 28, 2015</u>		
Document # <u>150014812</u>	at <u>2:19</u> <u>July 28, 2015</u>	Recorded
BETSY B. WOOLRIDGE, CLERK	herewith as # <u>150014812</u>	
<u>Ed Conner</u> , Dep. Clerk	BACKS (LOT 238 THRU LOT 247)	RMS
	UNITY COMMENTS	RMS
Rev.	Date	Description
		Revised By



AES
CONSULTING ENGINEERS

5248 Old Towne Road, Suite 1
Williamsburg, Virginia 23188
Phone: (757) 253-0040
Fax: (757) 220-8994
www.aesva.com

Hampton Roads | Central Virginia | Middle Peninsula

AMENDED PLAT OF SUBDIVISION
THE SETTLEMENT AT POWHATAN CREEK
PHASE III-B
LOTS 207-220, 223-231, 237-248, 265-271 AND
COMMON AREA 6B

BERKELEY DISTRICT JAMES CITY COUNTY VIRGINIA

Project Contacts:	TCS
Project Number:	0254-118
Scale:	1"=100'
Date:	01/18/15
Sheet Number	9 of 10