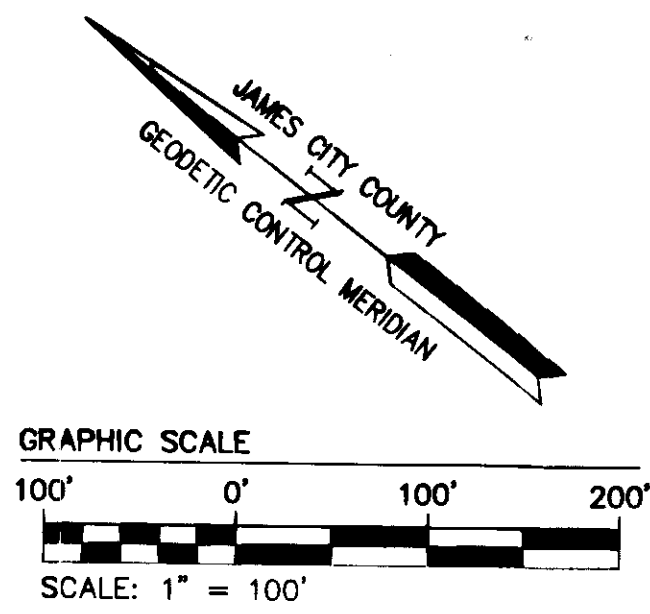


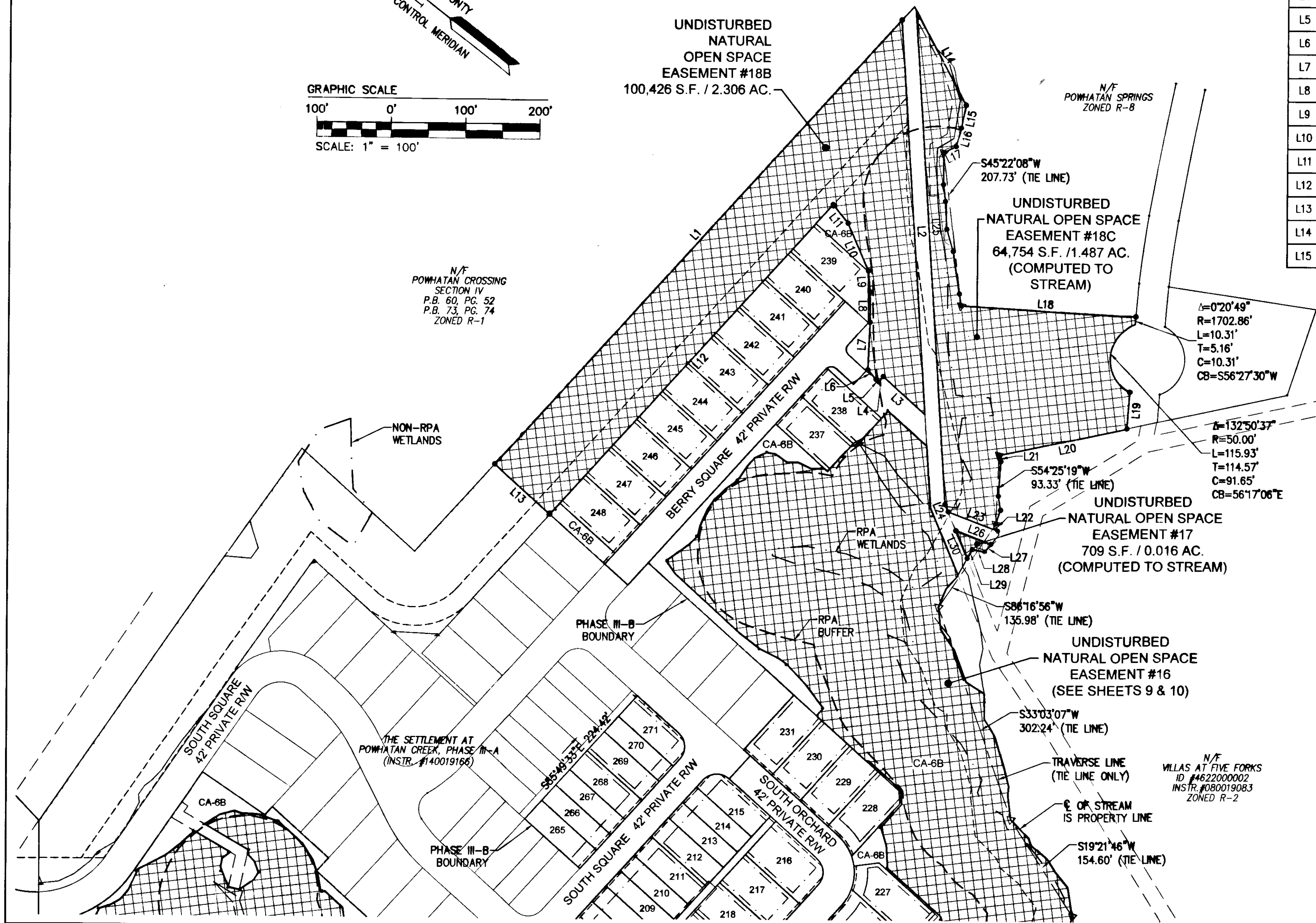
150014812



UNDISTURBED NATURAL OPEN SPACE EASEMENT #17 & 18B

LINE TABLE			LINE TABLE		
LINE	BEARING	LENGTH	LINE	BEARING	LENGTH
L1	S85°49'33"E	810.97'	L16	S67°01'22"W	25.94'
L2	N48°26'54"E	532.84'	L17	N64°48'24"W	18.84'
L3	N4°10'27"E	75.72'	L18	S34°41'24"E	235.46'
L4	N85°49'33"W	9.50'	L19	S56°17'06"W	49.47'
L5	N4°10'27"E	4.64'	L20	N50°01'24"W	175.61'
L6	N11°16'21"E	16.88'	L21	S34°55'33"W	6.85'
L7	N54°31'00"E	64.28'	L22	S34°56'58"W	9.35'
L8	N51°30'25"E	40.85'	L23	N17°15'11"W	71.50'
L9	N47°33'48"E	28.55'	L24	N29°23'38"E	10.68'
L10	N28°46'01"E	69.62*	L25	S48°26'54"W	667.20'
L11	N13°17'20"E	32.06'	L26	S17°15'11"E	50.48'
L12	N85°49'33"W	564.77'	L27	N88°46'22"W	13.27*
L13	N4°10'27"E	100.00'	L28	N27°22'40"W	17.01*
L14	S24°02'09"W	143.64'	L29	S80°53'03"W	13.78*
L15	S63°25'18"W	31.59'	L30	N29°23'38"E	40.18'

* COMPUTED TO STREAM

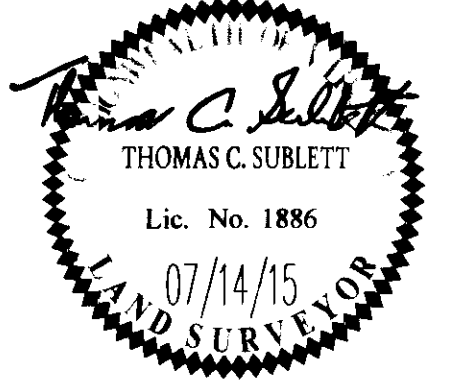


City of Williamsburg & County of James City
 Circuit Court: This PLAT was recorded on July 28, 2015
 at 2:19 AM (PM) PB PG
 Document # 150014812
 BETSY B. WOOLRIDGE, CLERK
 Ed Conner, Dep. Clerk

10 Large Plats Recorded herewith as # 150014812

BACKS (LOT 239 THRU LOT 247) RMS
 RNTY COMMENTS RMS
 Revised By

Rev.	Date	Description	Revised By



AES
 CONSULTING ENGINEERS
 Hampton Roads | Central Virginia | Middle Peninsula

5248 Olde Towne Road, Suite 1
 Williamsburg, Virginia 23188
 Phone: (757) 253-0040
 Fax: (757) 220-8994
 www.aesva.com

AMENDED PLAT OF SUBDIVISION
 THE SETTLEMENT AT POWHATAN CREEK
 PHASE III-B
 LOTS 207-220, 223-231, 237-248, 265-271 AND
 COMMON AREA 6B

BERKELEY DISTRICT JAMES CITY COUNTY VIRGINIA

Project Contacts: TCB
 Project Number: 9254-11B
 Scale: 1"=100'
 Date: 01/16/16
 Sheet Number
8 of 10