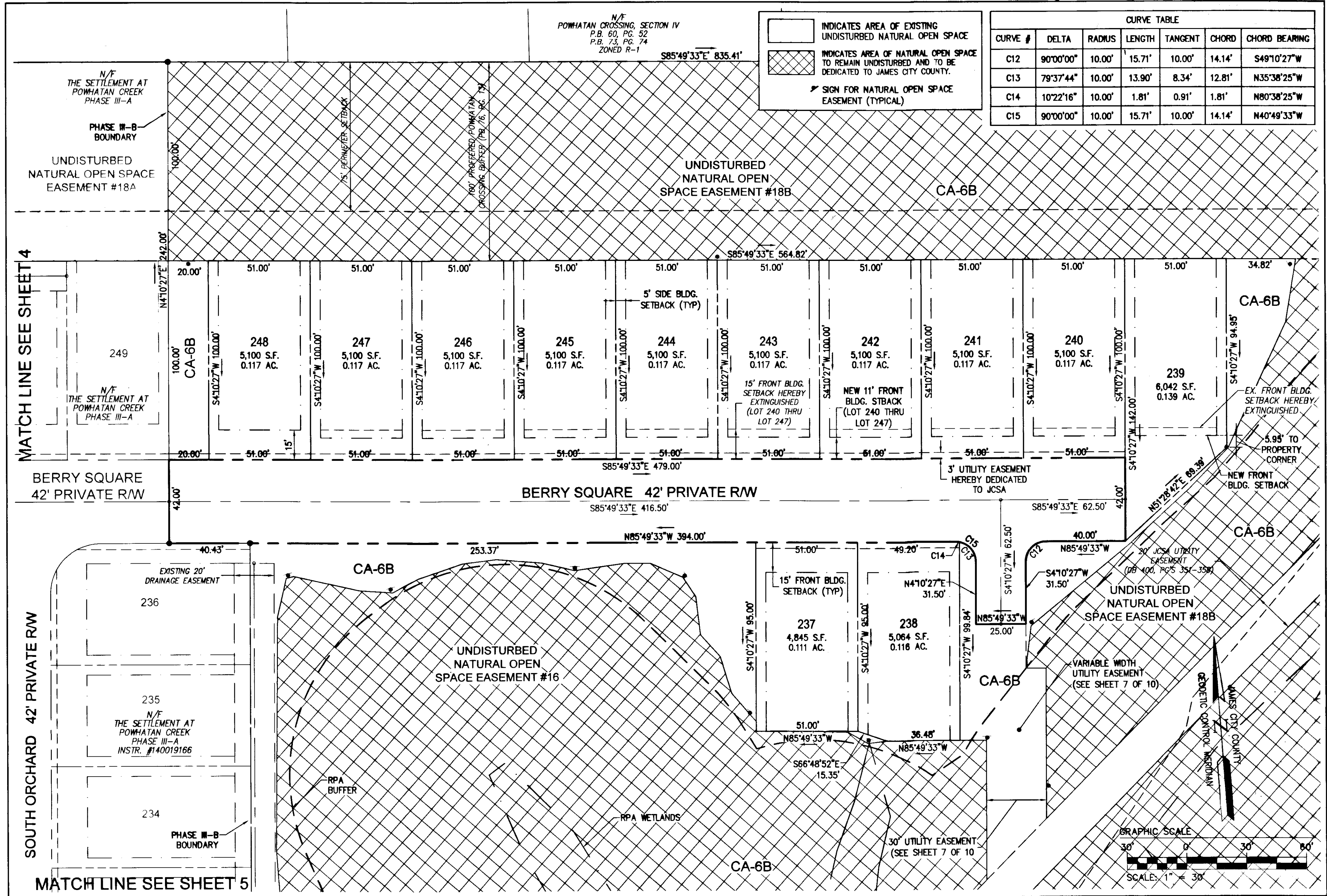
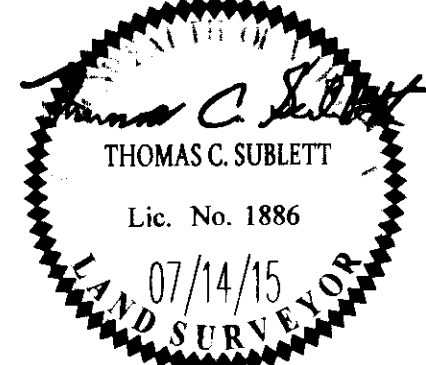


150014812



City of Williamsburg & County of James City Circuit Court. This PLAT was recorded on <u>July 28, 2015</u>	10 Large 9" Platts Recorded herewith as # <u>150014812</u>	Recorded
at <u>2:19</u> AM/PM PG <u>150014812</u>		
Document # <u>150014812</u>		
BETSY B. WOOLRIDGE, CLERK		
<u>Bo Connor</u> , Dep. Clerk		
	BOOKS (LOT 238 THRU LOT 247)	RMS
	NOTICE COMMENTS	RMS
		Revised By



NES
CONSULTING ENGINEERS
Hampton Roads | Central Virginia | Middle Peninsula

5248 Olde Towne Road, Suite 1
Williamsburg, Virginia 23188
Phone: (757) 253-0040
Fax: (757) 220-8994
www.aesva.com

AMENDED PLAT OF SUBDIVISION
THE SETTLEMENT AT POWHATAN CREEK
PHASE III-B
LOTS 207-220, 223-231, 237-248, 265-271 AND
COMMON AREA 6B
BERKELEY DISTRICT JAMES CITY COUNTY VIRGINIA

Project Contacts:	TCS
Project Number:	9254-11B
Scale:	1"=30'
Date:	01/16/18
Sheet Number	6 of 10