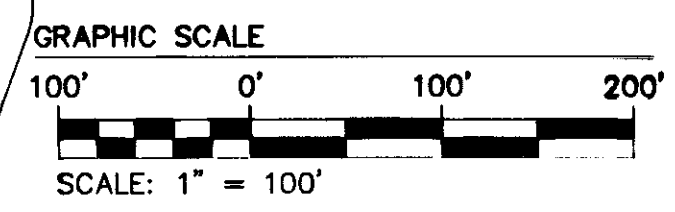
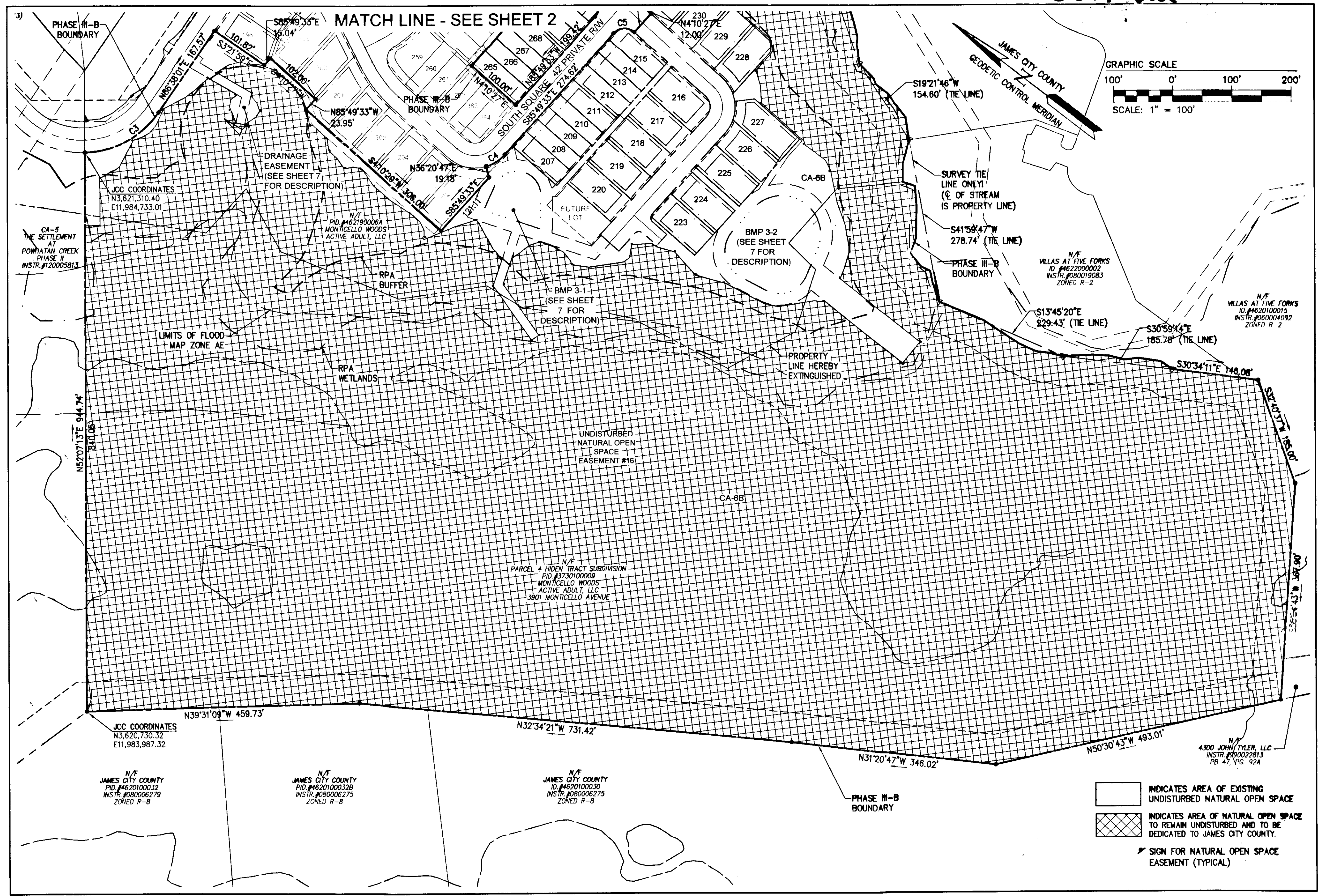


150014812

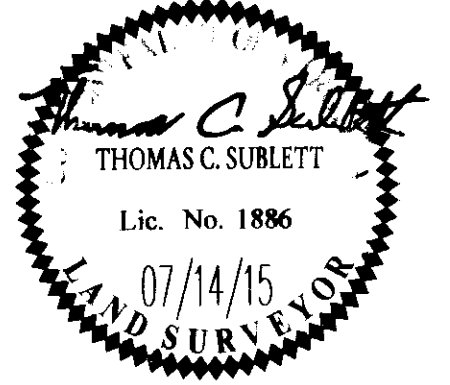


- INDICATES AREA OF EXISTING UNDISTURBED NATURAL OPEN SPACE
- INDICATES AREA OF NATURAL OPEN SPACE TO REMAIN UNDISTURBED AND TO BE DEDICATED TO JAMES CITY COUNTY.
- SIGN FOR NATURAL OPEN SPACE EASEMENT (TYPICAL)

City of Williamsburg & County of James City
 Circuit Court: This PLAT was recorded on July 28, 2015
 at 2:19 AM (P) PG PG
 Document # 150014812
 BETSY B. WOOLRIDGE, CLERK
 Dep. Clerk

10 Large 150014812 Platts Recorded herewith as # 150014812

REVISIONS	DATE	DESCRIPTION	BY



YES
 CONSULTING ENGINEERS
 Hampton Roads | Central Virginia | Middle Peninsula

5248 Olde Towne Road, Suite 1
 Williamsburg, Virginia 23188
 Phone: (757) 253-0040
 Fax: (757) 220-8994
 www.yesva.com

AMENDED PLAT OF SUBDIVISION
THE SETTLEMENT AT POWHATAN CREEK
PHASE III-B
LOTS 207-220, 223-231, 237-248, 265-271 AND
COMMON AREA 6B

BERKELEY DISTRICT JAMES CITY COUNTY VIRGINIA

Project Contacts: TCB
 Project Number: 9264-11B
 Scale: 1"=100' Date: 01/16/16
 Sheet Number:
3 of 10