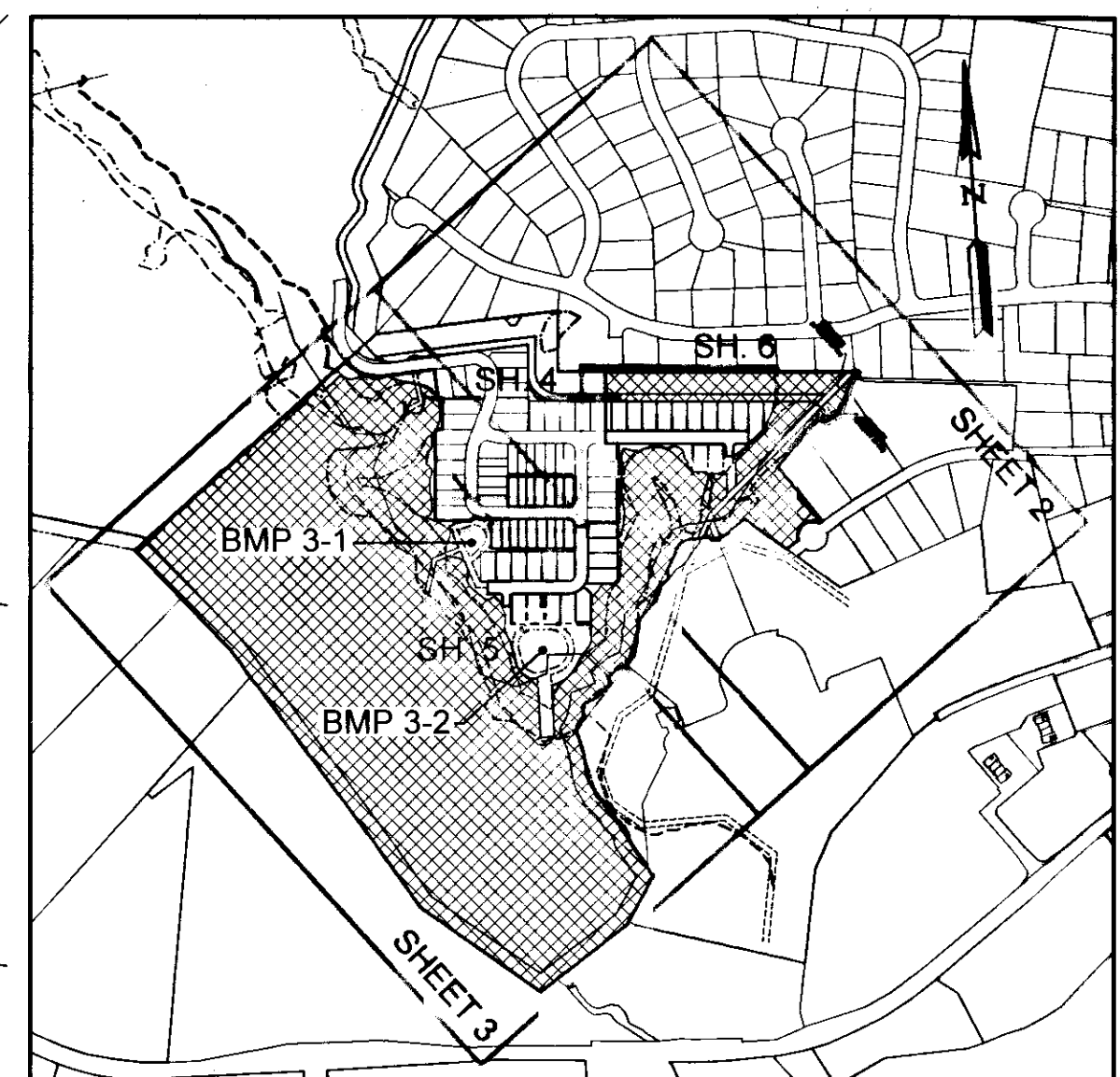
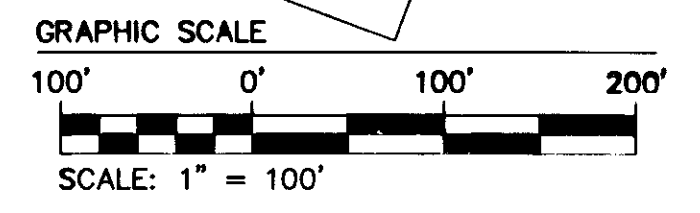
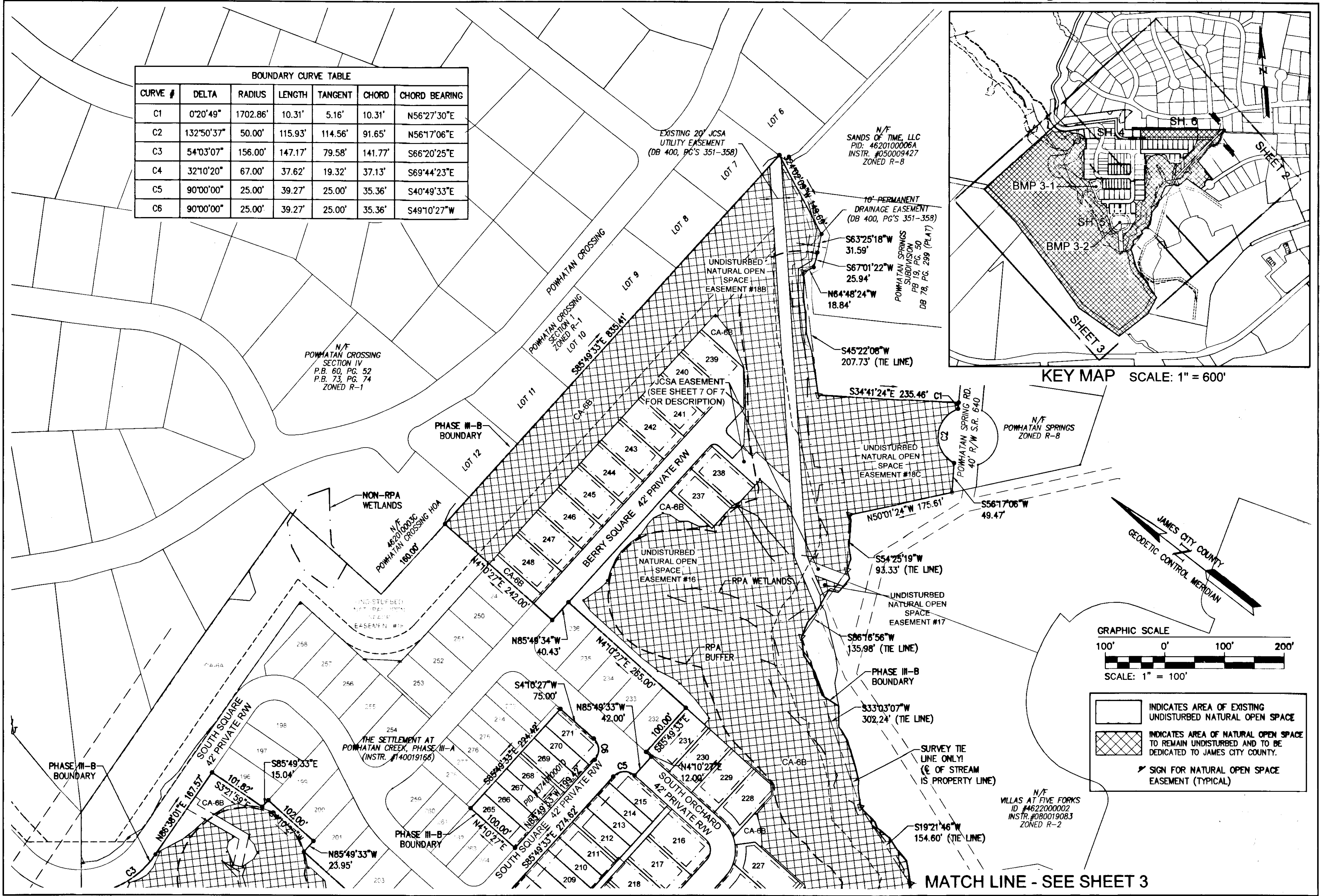


BOUNDARY CURVE TABLE						
CURVE #	DELTA	RADIUS	LENGTH	TANGENT	CHORD	CHORD BEARING
C1	0°20'49"	1702.86'	10.31'	5.16'	10.31'	N56°27'30"E
C2	132°50'37"	50.00'	115.93'	114.56'	91.65'	N56°17'06"E
C3	54°03'07"	156.00'	147.17'	79.58'	141.77'	S66°20'25"E
C4	32°10'20"	67.00'	37.62'	19.32'	37.13'	S69°44'23"E
C5	90°00'00"	25.00'	39.27'	25.00'	35.36'	S40°49'33"E
C6	90°00'00"	25.00'	39.27'	25.00'	35.36'	S49°10'27"W



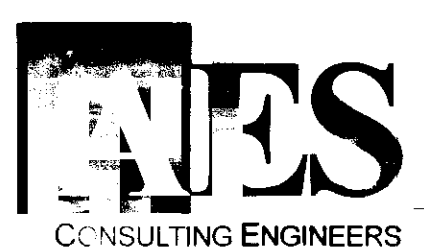
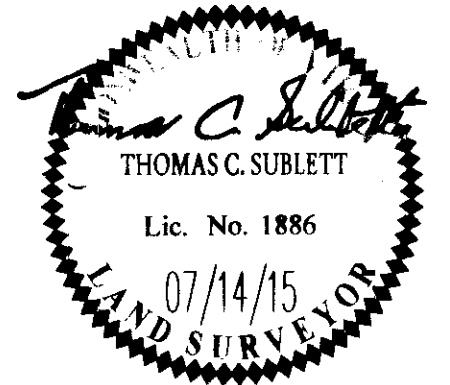
KEY MAP SCALE: 1" = 600'



INDICATES AREA OF EXISTING UNDISTURBED NATURAL OPEN SPACE
 INDICATES AREA OF NATURAL OPEN SPACE TO REMAIN UNDISTURBED AND TO BE DEDICATED TO JAMES CITY COUNTY.
 SIGN FOR NATURAL OPEN SPACE EASEMENT (TYPICAL)

MATCH LINE - SEE SHEET 3

City of Williamsburg & County of James City Circuit Court: This PLAT was recorded on July 28, 2015		10 Large Small Plat(s) Recorded herewith as # 150014812
at 2:19 AM P.M. PG. 1	BACKS (LOT 239 THRU LOT 247)	
Document # 150014812	RMS	
BETSY B. WOOLRIDGE, CLERK	RMS	
S.D. Connor , Dep. Clerk	Revised By	
Rev.	Date	Description



5248 Old Towne Road, Suite 1
Williamsburg, Virginia 23188
Phone: (757) 253-0040
Fax: (757) 220-8994
www.aesva.com

AMENDED PLAT OF SUBDIVISION
THE SETTLEMENT AT POWHATAN CREEK
 PHASE III-B
 LOTS 207-220, 223-231, 237-248, 265-271 AND
 COMMON AREA 6B
 BERKELEY DISTRICT JAMES CITY COUNTY VIRGINIA

Project Contacts:	T.C.B.
Project Number:	6254-11B
Scale:	1"=100'
Date:	01/16/16
Sheet Number	2 of 10