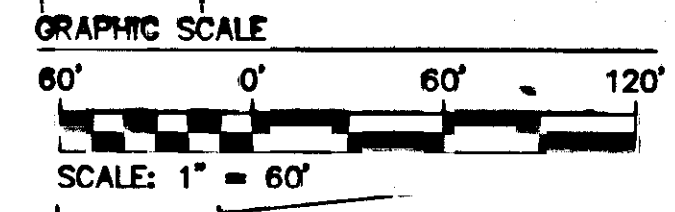
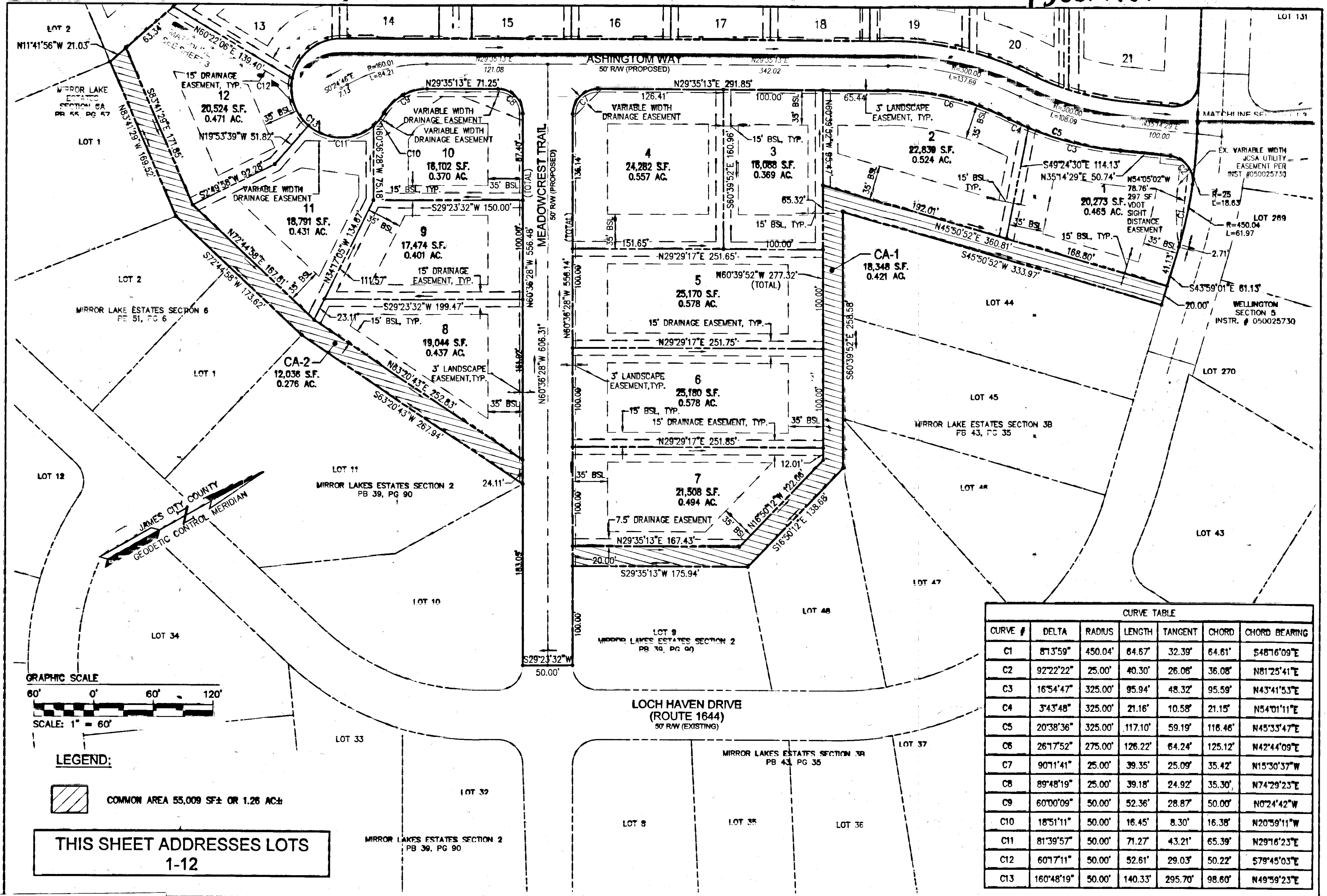


150014737



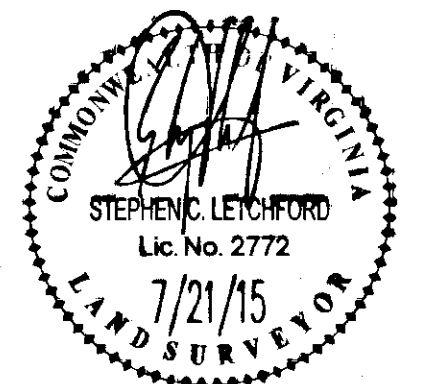
**LEGEND:**  
 COMMON AREA 55,009 SF ± OR 1.26 AC ±

**THIS SHEET ADDRESSES LOTS 1-12**

CURVE TABLE						
CURVE #	DELTA	RADIUS	LENGTH	TANGENT	CHORD	CHORD BEARING
C1	81°3'59"	450.04'	64.67'	32.39'	64.61'	S48°16'09"E
C2	92°22'22"	25.00'	40.30'	26.08'	36.08'	N81°25'41"E
C3	16°54'47"	325.00'	95.94'	48.32'	95.59'	N43°41'53"E
C4	3°43'48"	325.00'	21.16'	10.58'	21.15'	N54°01'11"E
C5	20°38'36"	325.00'	117.10'	59.19'	116.46'	N45°33'47"E
C6	26°17'52"	275.00'	126.22'	64.24'	125.12'	N42°44'09"E
C7	90°11'41"	25.00'	39.35'	25.09'	35.42'	N15°30'37"W
C8	89°48'19"	25.00'	39.18'	24.92'	35.30'	N74°29'23"E
C9	60°00'09"	50.00'	52.36'	28.87'	50.00'	N0°24'42"W
C10	18°51'11"	50.00'	16.45'	8.30'	16.38'	N20°59'11"W
C11	81°39'57"	50.00'	71.27'	43.21'	65.39'	N29°16'23"E
C12	60°17'11"	50.00'	52.61'	29.03'	50.22'	S79°45'03"E
C13	160°48'19"	50.00'	140.33'	295.70'	98.60'	N49°59'23"E

City of Williamsburg & County of James City  
 Circuit Court: This PLAT was recorded on 7-27-2015  
 at 2:52 AM/PM, PG. 3 Large (Small Plats) Redorded  
 Document # 150014737 herewith as # 150014737  
 BETSY B. WOOLRIDGE, CLERK  
 amy stouy, Dep. Clerk

Rev	Date	Description	Revised By
2	7/21/2015	REVISED PER JCC PLANNING COMMENTS	LBA
1	4/8/2015	REVISED PER COMMENTS	LBA



**AES**  
 CONSULTING ENGINEERS  
 8248 Old Towne Road, Suite 1  
 Williamsburg, Virginia 23108  
 Phone: (757) 253-0040  
 Fax: (757) 220-8994  
 www.aesva.com

**PLAT OF SUBDIVISION  
 WINDSOR RIDGE  
 SECTION 4**  
 LOTS 1-28 (28 LOTS)  
 BEING THE PROPERTY OF  
 BOCA LAND INVESTORS, LLC.  
 STONEHOUSE DISTRICT JAMES CITY COUNTY VIRGINIA

Project Contacts: BCL  
 Project Number: 8223-18  
 Scale: AS NOTED Date: 1/21/15  
 Sheet Number  
**2 OF 3**