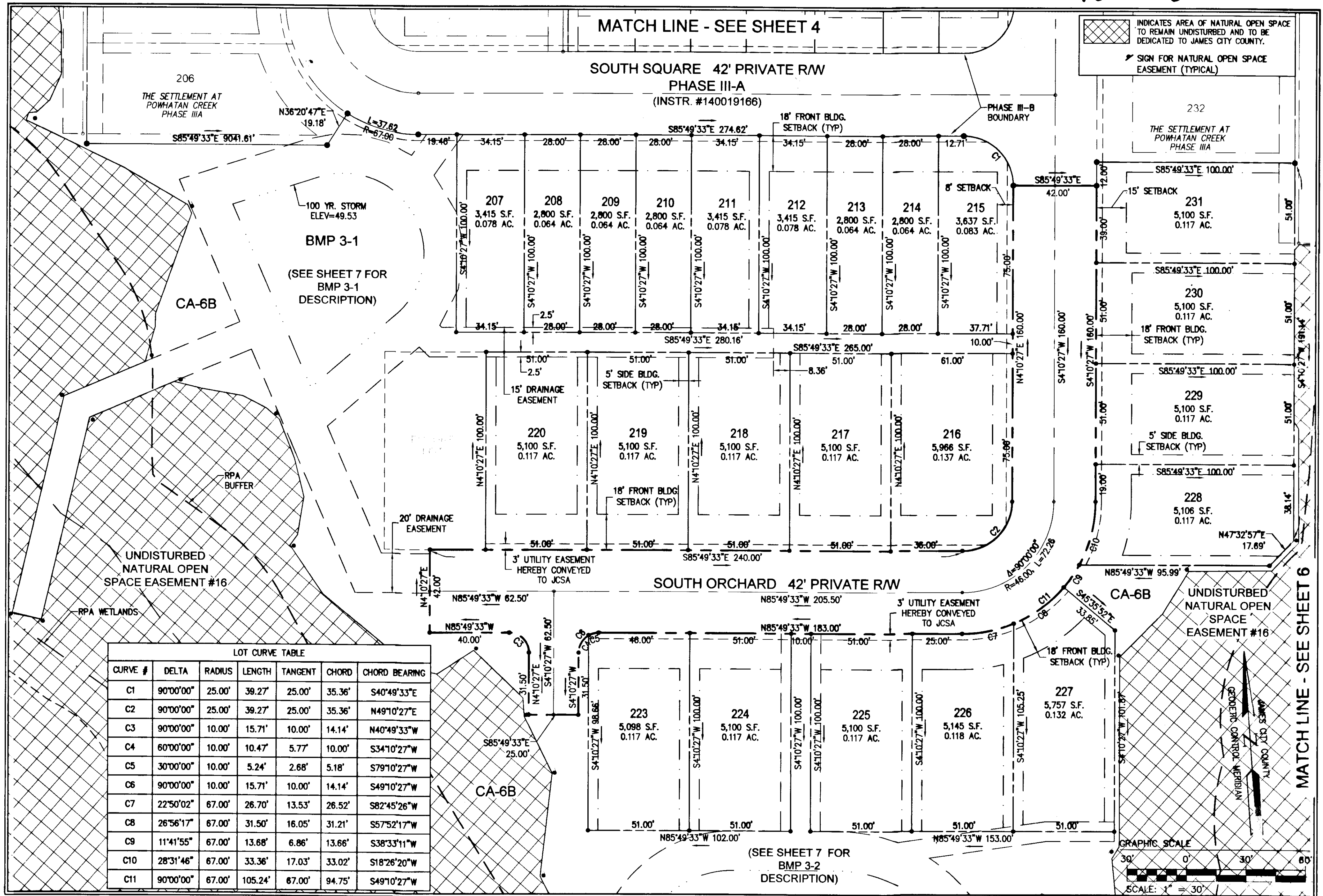


150011480



City of Williamsburg & County of James City  
 Circuit Court: This PLAT was recorded on  
June 10, 2015  
 at 2:26 AM/PM, PG. 1  
 Document # 150011480  
 BETSY B. WOOLRIDGE, CLERK  
 Dep. Clerk

**THOMAS C. SUBLETT**  
 Lic. No. 1886  
 04/01/15  
 LAND SURVEYOR

**AES**  
 CONSULTING ENGINEERS  
 5248 Olde Towne Road, Suite 1  
 Williamsburg, Virginia 23188  
 Phone: (757) 253-0040  
 Fax: (757) 220-8994  
 www.aesva.com

**PLAT OF SUBDIVISION**  
**THE SETTLEMENT AT POWHATAN CREEK**  
**PHASE III-B**  
**LOTS 207-220, 223-231, 237-248, 265-271 AND**  
**COMMON AREA 6B**  
 BERKELEY DISTRICT      JAMES CITY COUNTY      VIRGINIA

Project Contacts: TCB  
 Project Number: 0254-11B  
 Scale: 1"=30'  
 Date: 01/18/18  
 Sheet Number  
**5 of 10**

Rev	Date	Description	Revised By
1	04/01/15	REVISED PER COUNTY COMMENTS	