

150008767

CURVE TABLE						
LOT	DELTA	RADIUS	LENGTH	TANGENT	CHORD	CHORD BEARING
CA4 A	21°49'47"	309.00'	117.73'	59.59'	117.02'	N54°50'35"W
77 A	3°21'47"	309.00'	18.14'	9.07'	18.14'	N67°26'22"W
77 B	43°28'39"	191.00'	144.94'	76.16'	141.49'	N47°22'56"W
78	57°44'51"	191.00'	192.51'	105.33'	184.46'	N03°13'48"E
CA4 B	4°51'59"	191.00'	16.22'	8.12'	16.22'	N34°32'13"E
CA4 C	33°34'41"	50.00'	29.30'	15.09'	28.88'	N53°45'33"E
79 A	7°49'55"	50.00'	6.83'	3.42'	6.83'	N74°27'51"E
79 B	67°44'40"	50.00'	59.12'	33.56'	55.73'	N44°30'29"E
80	28°57'18"	50.00'	25.27'	12.91'	25.00'	N03°50'30"W
81	60°00'13"	50.00'	52.36'	28.87'	50.00'	N48°19'16"W
82	28°57'18"	50.00'	25.27'	12.91'	25.00'	S87°11'59"W
83	77°09'41"	50.00'	67.34'	39.89'	62.36'	S34°08'29"W
85	12°16'06"	241.00'	51.61'	25.90'	51.51'	S30°50'10"W
86	20°48'08"	241.00'	87.50'	44.24'	87.02'	S14°18'03"E
87	22°30'34"	241.00'	94.68'	47.96'	94.07'	S07°21'18"E
CA4 D	11°36'23"	241.00'	48.82'	24.49'	48.74'	S24°24'47"E
88	21°08'46"	241.00'	88.95'	44.99'	88.44'	S40°47'21"E
89	12°28'04"	241.00'	52.44'	26.33'	52.34'	S57°35'48"E
90 A	5°17'28"	241.00'	22.26'	11.14'	22.23'	S66°28'32"E
90 B	6°04'56"	259.00'	27.49'	13.76'	27.48'	S66°04'48"E
CA4 E	19°06'38"	259.00'	86.39'	43.60'	85.99'	S53°29'01"E

RIGHT OF WAY CURVE TABLE						
CURVE	DELTA	RADIUS	LENGTH	TANGENT	CHORD	CHORD BEARING
C8	25°11'34"	309.00'	135.87'	69.05'	134.78'	N56°31'29"W
C9	106°05'29"	191.00'	353.67'	253.89'	305.27'	N16°04'31"W
C10	41°24'36"	50.00'	36.13'	18.90'	35.36'	N57°40'31"E
C11	282°49'10"	50.00'	229.36'	75.00'	253.00'	N53°01'47"W
C12	41°24'36"	50.00'	36.14'	18.90'	35.36'	S16°15'56"W
C13	106°05'29"	241.00'	446.26'	320.36'	385.18'	S16°04'31"E
C14	25°11'34"	259.00'	113.88'	57.88'	112.97'	S56°31'29"E

EASEMENT LINE TABLE		
LINE	BEARING	LENGTH
L1	S27°46'33"W	56.48'
L2	S04°27'08"E	125.77'
L3	S51°38'28"E	157.93'

INDICATES AREA OF NATURAL OPEN SPACE TO REMAIN UNDISTURBED AND TO BE DEDICATED TO JAMES CITY COUNTY.

INDICATES AREA OF PRIVATE NATURAL OPEN SPACE TO REMAIN UNDISTURBED AND TO BE DEDICATED BY EASEMENT TO JAMES CITY COUNTY.

NOTE: LOTS 72-80 SHALL MAINTAIN A MINIMUM FINISH FLOOR ABOVE 57 FT MSL (UNLESS OTHERWISE NOTED) TO AVOID FLOOD HAZARD DURING A DAM BREAK FROM THE UPSTREAM FACILITY

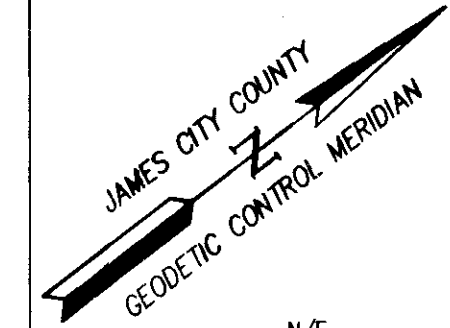
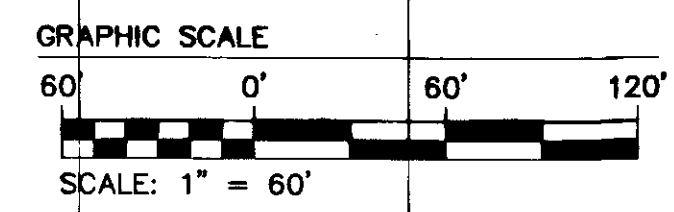
NOTE: CONSERVATION EASEMENT SIGNS TO BE INSTALLED AT THE INTERSECTION OF PROPERTY LINES AND EASEMENT AND AS SHOWN.

NOTE: 15' SEPARATION FROM 100' RPA BUFFER FOR INITIAL PRINCIPAL RESIDENTIAL DWELLING CONSTRUCTION (TYP.) LOT AREAS INCLUDE AREA OF PRIVATE NATURAL OPEN SPACE.

CA1 - COMMON AREA 1

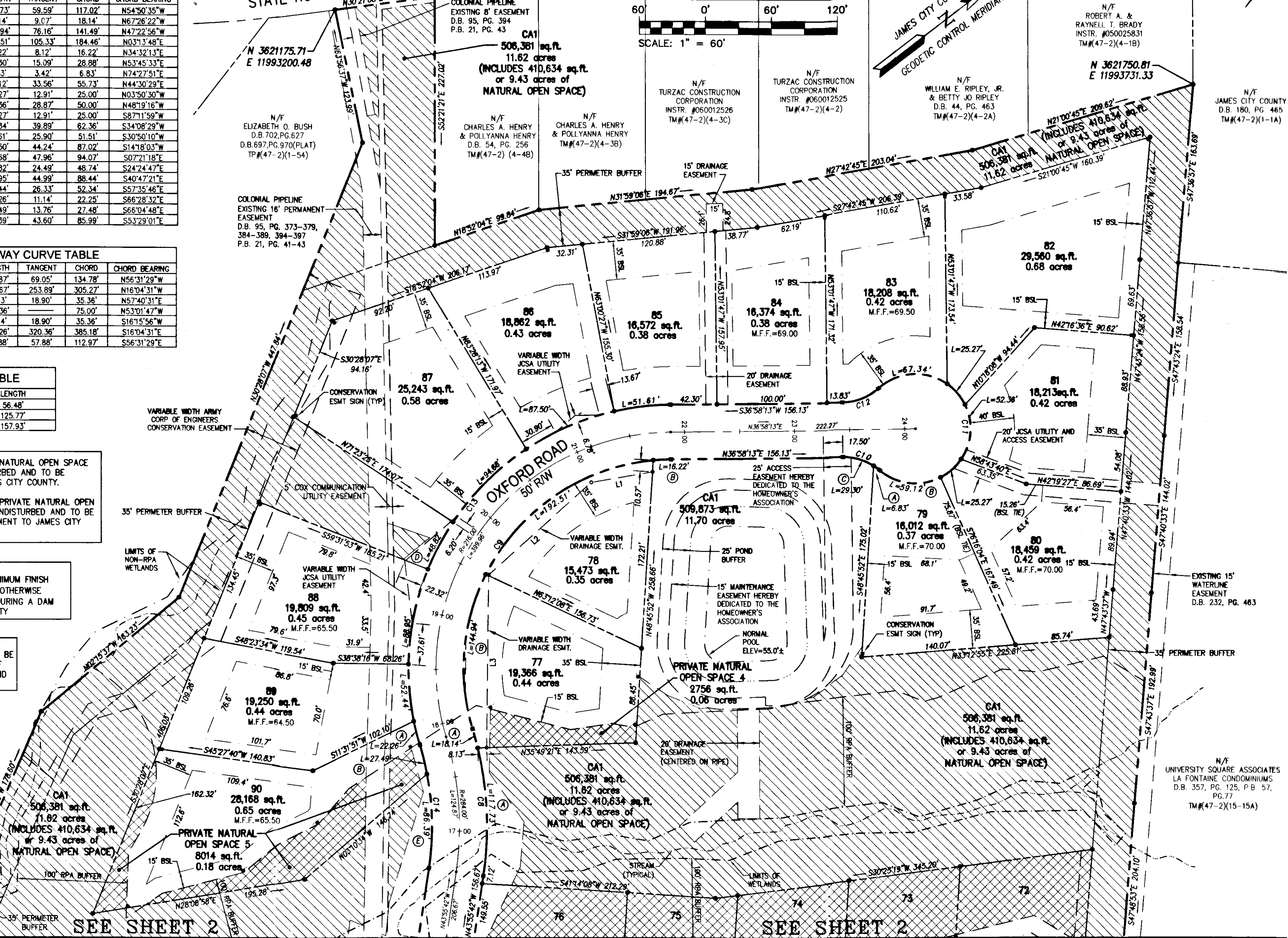
N/F ELIZABETH O. BUSH
D.B. 702, PG. 627
D.B. 697, PG. 970 (PLAT)
TP#(47-2)(1-54)

JOHN TYLER MEMORIAL HIGHWAY
STATE ROUTE 5



N/F ROBERT A. & RAYNELL T. BRADY
INSTR. #050025831
TM#(47-2)(4-18)

N/F JAMES CITY COUNTY
D.B. 180, PG. 465
TM#(47-2)(1-1A)



SEE SHEET 2

SEE SHEET 2

CONSULTING ENGINEERS
WILLIAMSBURG • RICHMOND • GLOUCESTER

City of Williamsburg & County of James City
Circuit Court: This PLAT was recorded on
May 11, 2015
at 3:06 PM, PG. 15
Document # 150008767
BETSY B. WOOLRIDGE, CLERK
amy stou, Dep. Clerk
3 Large Small Plat(s) Recorded
herewith as # **150008767**

PLAT OF SUBDIVISION
MARYWOOD
PHASE II
LOTS 64-90
PREPARED FOR CENTEX HOMES

JAMESTOWN DISTRICT JAMES CITY COUNTY VIRGINIA

No.	DATE	REVISION / COMMENT / NOTE	REVISOR	REVIEWED BY
4	3/23/15	REVIEWED PLAT AND UPDATED NOTES	JAG	
3	8/26/14	REVIEWED PLAT AND UPDATED NOTES	JFS	
2	4/3/09	REVISED UTILITY EASEMENTS PER JCSA COMMENTS	JFS	
1	2/9/09	REVISED PER COUNTY COMMENTS	JFS	

Designed	Drawn
JAG/MJR	JFS
Scale	Date
1"=60'	12/04/07
Project No.	
9272	
Drawing No.	
3 OF 3	