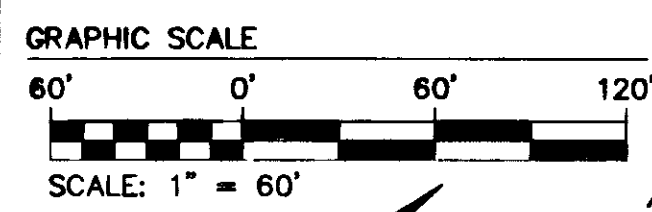
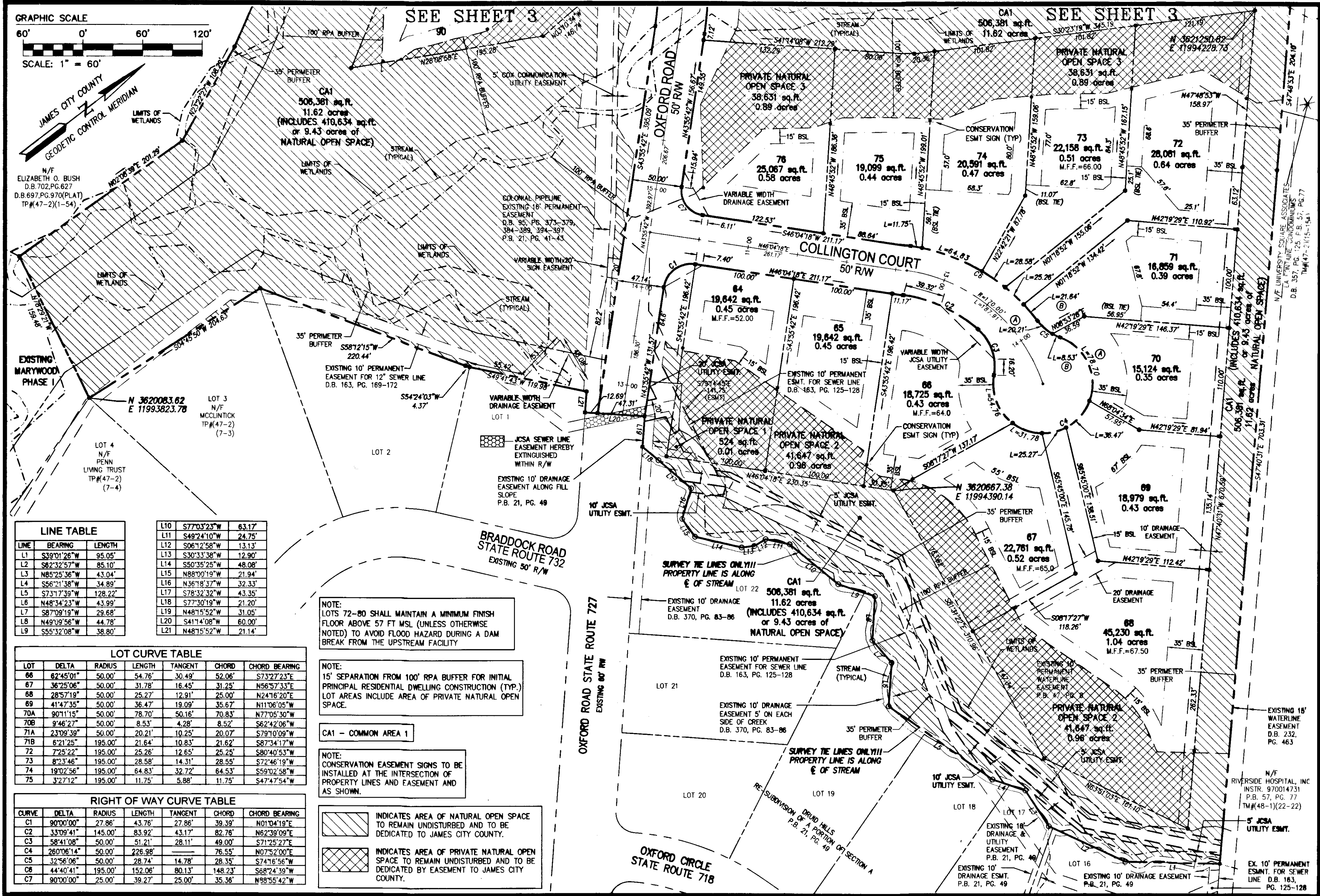


150008767



LINE TABLE

LINE	BEARING	LENGTH
L1	S39°01'26"W	95.05'
L2	S62°32'57"W	85.10'
L3	N85°25'36"W	43.04'
L4	S56°21'38"W	34.89'
L5	S73°17'39"W	128.22'
L6	N48°34'23"W	43.99'
L7	S87°09'19"W	29.68'
L8	N49°09'56"W	44.78'
L9	S55°32'08"W	38.80'

L10	S77°03'25"W	63.17'
L11	S49°24'10"W	24.75'
L12	S06°12'58"W	13.13'
L13	S30°33'38"W	12.90'
L14	S50°35'25"W	48.08'
L15	N88°09'19"W	21.94'
L16	N36°18'37"W	32.33'
L17	S78°32'32"W	43.35'
L18	S77°30'19"W	21.20'
L19	N48°15'52"W	31.05'
L20	S41°14'08"W	60.00'
L21	N48°15'52"W	21.14'

LOT CURVE TABLE

LOT	DELTA	RADIUS	LENGTH	TANGENT	CHORD	CHORD BEARING
66	82°45'01"	50.00'	54.76'	30.49'	52.06'	S73°27'23"E
67	36°25'06"	50.00'	31.78'	16.45'	31.25'	N56°57'33"E
68	28°57'19"	50.00'	25.27'	12.91'	25.00'	N24°16'20"E
69	41°47'35"	50.00'	36.47'	19.09'	35.67'	N11°06'05"W
70A	90°11'15"	50.00'	78.70'	50.16'	70.83'	N77°05'30"W
70B	9°46'27"	50.00'	8.53'	4.28'	8.52'	S62°42'06"W
71A	23°09'39"	50.00'	20.21'	10.25'	20.07'	S79°10'09"W
71B	6°21'25"	195.00'	21.64'	10.83'	21.82'	S87°34'17"W
72	7°25'22"	195.00'	25.26'	12.65'	25.25'	S80°40'53"W
73	8°23'46"	195.00'	28.58'	14.31'	28.55'	S72°46'19"W
74	19°02'56"	195.00'	64.83'	32.72'	64.53'	S59°02'58"W
75	3°27'12"	195.00'	11.75'	5.88'	11.75'	S47°47'54"W

RIGHT OF WAY CURVE TABLE

CURVE	DELTA	RADIUS	LENGTH	TANGENT	CHORD	CHORD BEARING
C1	90°00'00"	27.86'	43.76'	27.86'	39.39'	N01°04'19"E
C2	33°09'41"	145.00'	83.92'	43.17'	82.76'	N62°39'09"E
C3	58°41'08"	50.00'	51.21'	28.11'	49.00'	S71°25'27"E
C4	26°06'14"	50.00'	226.98'	76.55'	76.55'	N07°52'00"E
C5	32°56'06"	50.00'	28.74'	14.78'	28.35'	S74°16'56"W
C6	44°40'41"	195.00'	152.06'	80.13'	148.23'	S68°24'39"W
C7	90°00'00"	25.00'	39.27'	25.00'	35.36'	N88°55'42"W

NOTE:
LOTS 72-80 SHALL MAINTAIN A MINIMUM FINISH FLOOR ABOVE 57 FT MSL (UNLESS OTHERWISE NOTED) TO AVOID FLOOD HAZARD DURING A DAM BREAK FROM THE UPSTREAM FACILITY

NOTE:
15' SEPARATION FROM 100' RPA BUFFER FOR INITIAL PRINCIPAL RESIDENTIAL DWELLING CONSTRUCTION (TYP). LOT AREAS INCLUDE AREA OF PRIVATE NATURAL OPEN SPACE.

CA1 - COMMON AREA 1

NOTE:
CONSERVATION EASEMENT SIGNS TO BE INSTALLED AT THE INTERSECTION OF PROPERTY LINES AND EASEMENT AND AS SHOWN.

INDICATES AREA OF NATURAL OPEN SPACE TO REMAIN UNDISTURBED AND TO BE DEDICATED TO JAMES CITY COUNTY.

INDICATES AREA OF PRIVATE NATURAL OPEN SPACE TO REMAIN UNDISTURBED AND TO BE DEDICATED BY EASEMENT TO JAMES CITY COUNTY.

CONSULTING ENGINEERS
WILLIAMSBURG • RICHMOND • GLOUCESTER

City of Williamsburg & County of James City
Circuit Court: This PLAT was recorded on
May 11, 2015
at 3:30 AM/PM, PG.
Document # 150008767
BETSY B. WOOLRIDGE, CLERK
AMY STOLTS, Dep. Clerk

3 Large/Small Plats Recorded
herewith as # 150008767

PLAT OF SUBDIVISION
MARYWOOD
PHASE II
LOTS 64-90
PREPARED FOR CENTEX HOMES

JAMESTOWN DISTRICT JAMES CITY COUNTY VIRGINIA

Thomas C. Sorrett
THOMAS C. SORRETT
Lic. No. 1886
3/23/15
LAND SURVEYOR

No.	DATE	REVISION / COMMENT / NOTE	REVISED BY	REVIEWED BY
4	3/23/15	REVIEWED PLAT AND UPDATED NOTES	JAG	
3	8/26/14	REVIEWED PLAT AND UPDATED NOTES	JFS	
2	4/3/09	REVISED UTILITY EASEMENTS PER JCSA COMMENTS	JFS	
1	2/9/09	REVISED PER COUNTY COMMENTS	JFS	

Designed	JAG/MJR	Drawn	JFS
Scale	1"=60'	Date	12/04/07
Project No.	9272	Drawing No.	2 OF 3