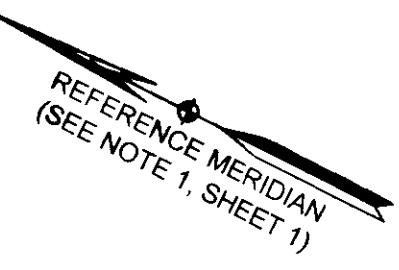


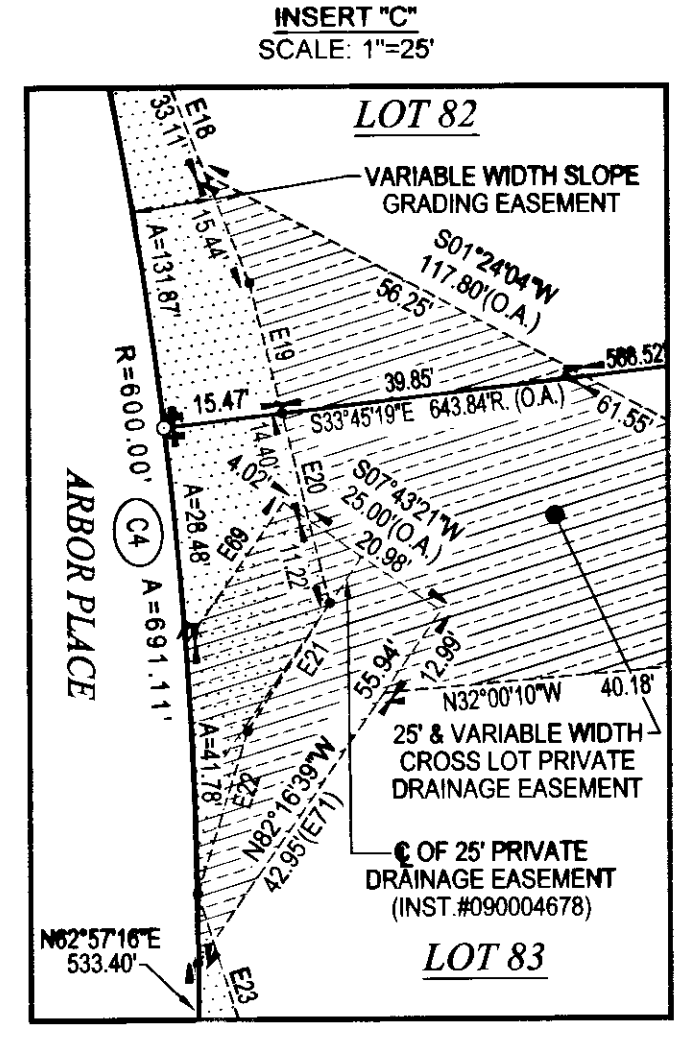
150006426



#	BEARING	DIST.
E16	S56°38'25"W	73.15'
E17	S43°20'57"W	68.16'
E18	S41°16'29"W	48.55'
E19	S49°14'01"W	17.60'
E20	S49°14'01"W	25.62'
E21	N84°11'02"W	19.89'
E22	S80°01'54"W	22.20'
E23	S45°39'31"W	21.34'
E24	S56°55'32"W	15.08'
E25	S62°06'27"W	80.01'
E26	S64°09'29"W	23.61'
E69	S82°16'39"E	22.48'
E70	N55°23'26"E	41.02'
E71	N82°16'39"W	42.95'

CURVE TABLE						
NO.	RADIUS	DELTA	ARC	TANGENT	CHORD	CH. BEARING
C3	723.94'	41°15'01"	521.20'	272.47'	510.02'	S58°15'08"W
C4	600.00'	65°59'45"	691.11'	389.61'	653.53'	N29°57'23"E

TABLE OF AREAS		
LOT	SQUARE FEET	ACRES
81	163,041	3.743
82	172,828	3.968

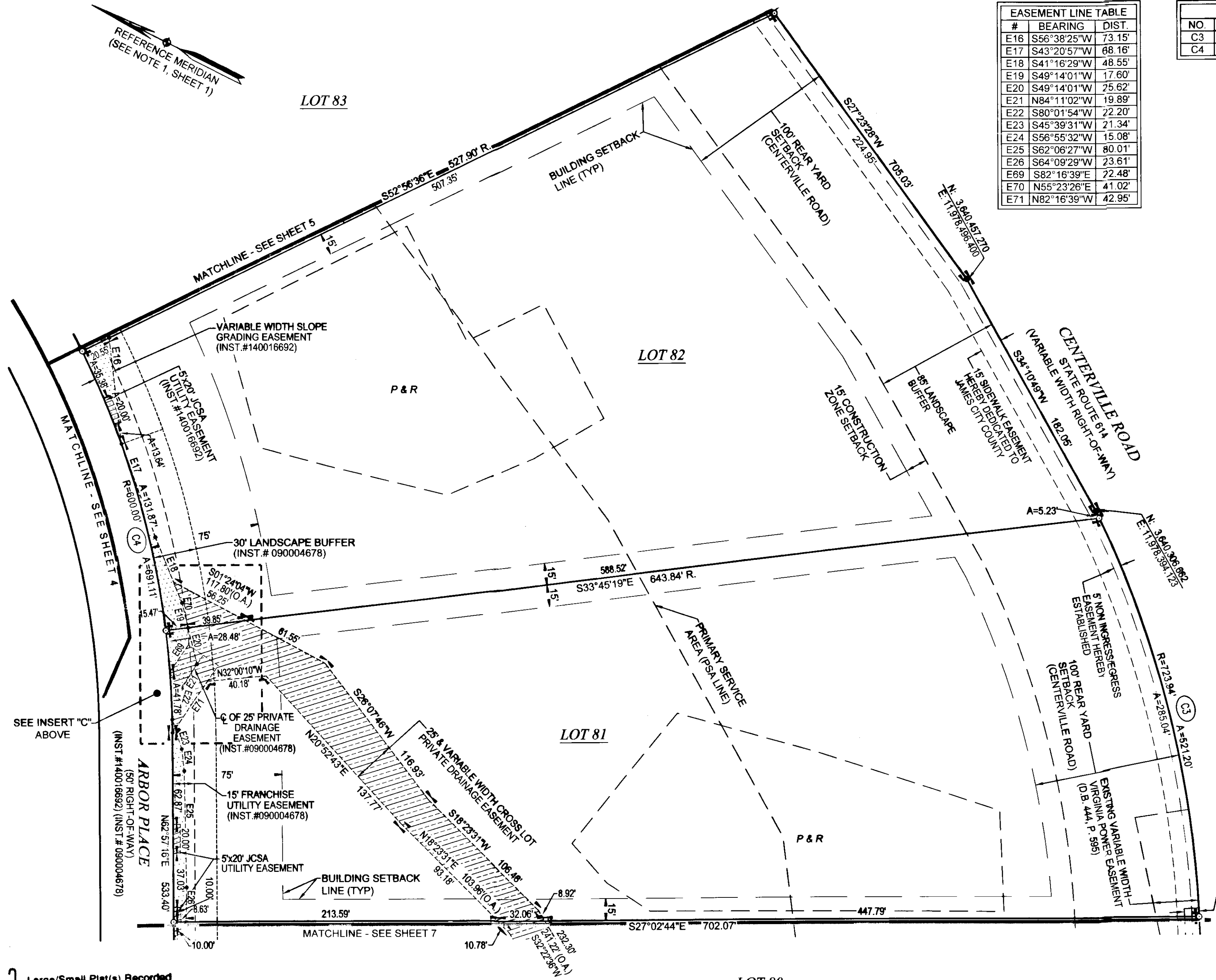
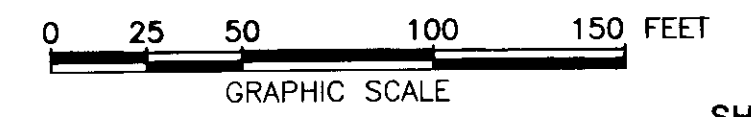


MONUMENT LEGEND
 ● DENOTES PIN FOUND
 ○ DENOTES PIN PLACED



SUBDIVISION PLAT OF
LIBERTY RIDGE
 BEING LOTS 79-86, 111 & 112 & OPEN SPACE #5,
 SECTION 1-B
 JAMES CITY COUNTY, VIRGINIA
 SCALE: 1"=50' FEBRUARY 13, 2015
 REVISED: MARCH 23, 2015

ROUSE-SIRINE ASSOCIATES, LTD.
 LAND SURVEYORS, MAPPING CONSULTANTS & S.U.E. QUALITY LEVELS "A-D"
 www.rouse-sirine.com
 333 OFFICE SQUARE LANE 362 McLAWS CIRCLE, SUITE 1
 VIRGINIA BEACH, VIRGINIA 23462 WILLIAMSBURG, VIRGINIA 23185
 TEL: (757) 490-2300 TEL: (757) 903-4695
 FAX: (757) 499-9136 FAX: (757) 903-4469



HATCH LEGEND
 [Dotted pattern] DENOTES VARIABLE WIDTH SLOPE GRADING EASEMENT
 [Diagonal lines] DENOTES 5'x20' JCSA UTILITY EASEMENT
 [Cross-hatch pattern] DENOTES DRAINAGE EASEMENT

SEPTIC DRAINFIELD LEGEND
 [Box with 'P'] PRIMARY DRAINFIELD (SEE NOTE 8, SHEET 1)
 [Box with 'R'] RESERVE DRAINFIELD

Large/Small Plat(s) Recorded herewith as # 150006426

COMMONWEALTH OF VIRGINIA
 CITY OF WILLIAMSBURG & COUNTY OF JAMES CITY CIRCUIT COURT.
 THIS 10 DAY OF April 2015.
 THE PLAT SHOWN HEREON WAS PRESENTED AND ADMITTED TO THE RECORD AS THE LAW DIRECTS AT 3:15 AM PM
 INSTRUMENT # 150006426

TESTE: Elizabeth O'Connor
 BETSY B. WOOLRIDGE, CLERK