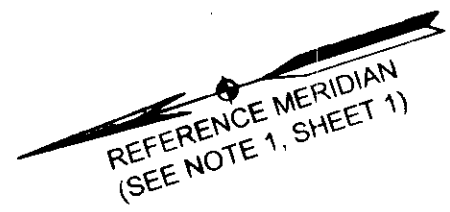


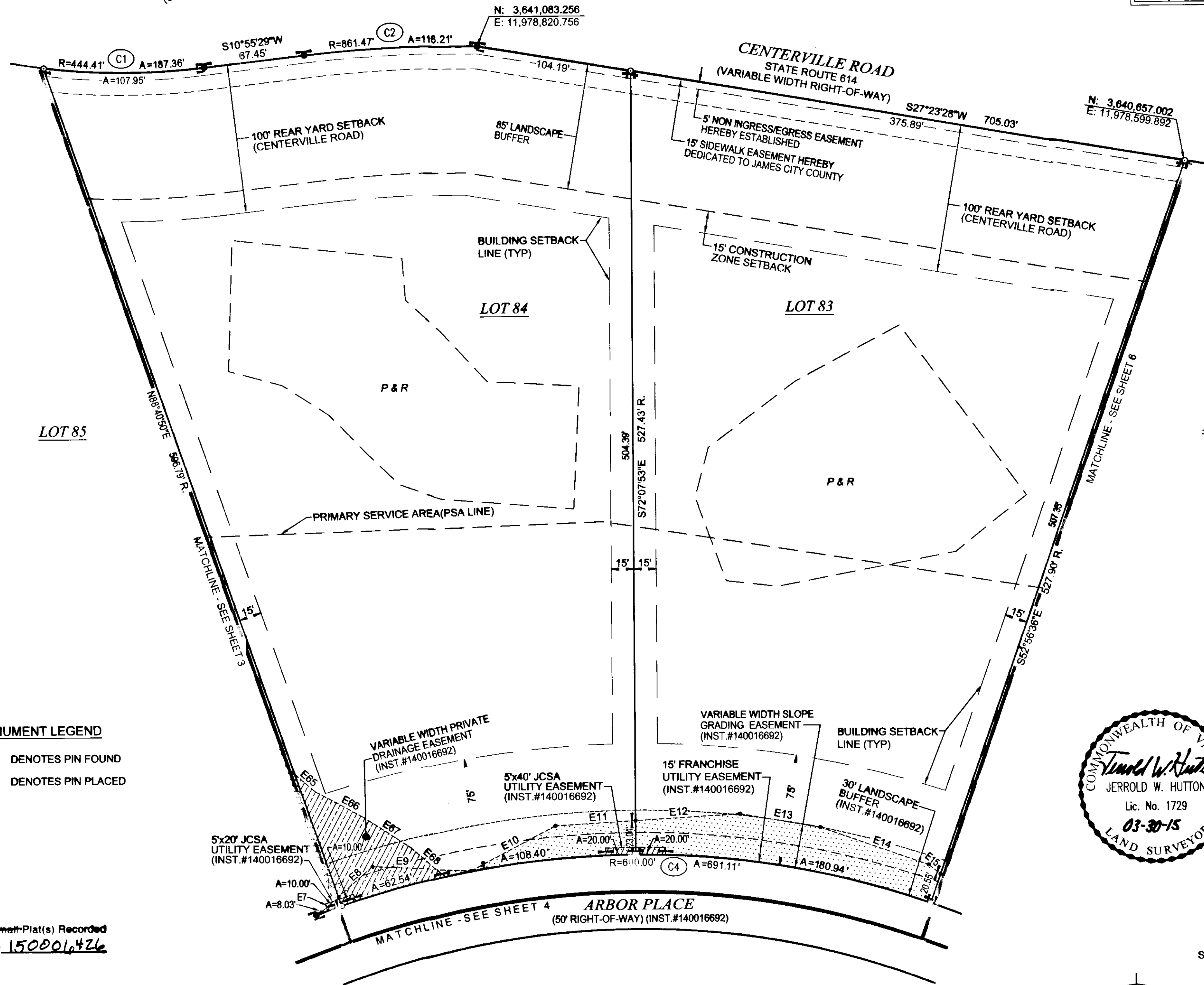
150006426



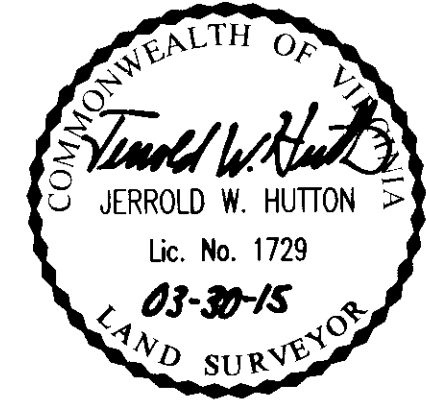
CURVE TABLE						
NO.	RADIUS	DELTA	ARC	TANGENT	CHORD	CH BEARING
C1	444.41'	24°09'18"	187.36'	95.09'	185.97'	S23°00'08"W
C2	861.47'	07°43'44"	116.21'	58.19'	116.12'	S14°47'21"W
C4	600.00'	65°59'45"	691.11'	389.61'	653.53'	N29°57'23"E

TABLE OF AREAS		
LOT	SQUARE FEET	ACRES
83	148,693	3.413
84	164,100	3.767

EASEMENT LINE TABLE		
#	BEARING	DIST.
E7	S23°37'19"E	15.44'
E8	S23°37'19"E	30.60'
E9	S20°20'26"W	66.16'
E10	S09°52'49"E	64.02'
E11	S14°37'22"W	53.74'
E12	S14°37'22"W	69.92'
E13	S27°41'22"W	54.81'
E14	S37°06'59"W	76.51'
E15	S56°38'25"W	10.14'
E65	S59°12'12"W	17.79'
E66	S46°04'48"W	37.08'
E67	S50°59'36"W	37.68'
E68	S57°38'39"W	30.01'



- MONUMENT LEGEND**
- DENOTES PIN FOUND
  - DENOTES PIN PLACED

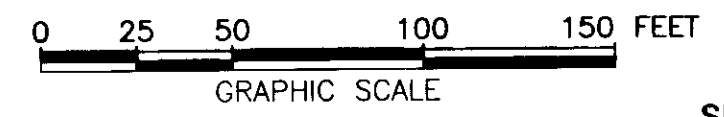


SUBDIVISION PLAT  
OF  
**LIBERTY RIDGE**  
BEING LOTS 79-86, 111 & 112 & OPEN SPACE #5,  
SECTION 1-B  
JAMES CITY COUNTY, VIRGINIA

SCALE: 1"=50' FEBRUARY 13, 2015  
REVISED: MARCH 23, 2015

**ROUSE-SIRINE ASSOCIATES, LTD.**  
LAND SURVEYORS, MAPPING CONSULTANTS & S.U.E. QUALITY LEVELS "A-D"  
www.rouse-sirine.com

333 OFFICE SQUARE LANE 362 McLAWS CIRCLE, SUITE 1  
VIRGINIA BEACH, VIRGINIA 23462 WILLIAMSBURG, VIRGINIA 23185  
TEL: (757) 490-2300 TEL: (757) 903-4695  
FAX: (757) 499-9136 FAX: (757) 903-4469



SHEET 5 OF 7

1 Large Small-Plat(s) Recorded  
herewith as # 150006426

COMMONWEALTH OF VIRGINIA  
CITY OF WILLIAMSBURG & COUNTY OF JAMES CITY CIRCUIT COURT.  
THIS 10 DAY OF April, 2015  
THE PLAT SHOWN HEREON WAS PRESENTED AND ADMITTED TO  
THE RECORD AS THE LAW DIRECTS. AT 3:15 AM PM  
INSTRUMENT # 150006426

TESTE: Elizabeth O'Connor  
BETSY B. WOOLRIDGE, CLERK

- HATCH LEGEND**
- DENOTES VARIABLE WIDTH SLOPE GRADING EASEMENT
  - DENOTES 5'x20' JCSA UTILITY EASEMENT
  - DENOTES DRAINAGE EASEMENT

- SEPTIC DRAINFIELD LEGEND**
- PRIMARY DRAINFIELD (SEE NOTE 8, SHEET 1)
  - RESERVE DRAINFIELD (SEE NOTE 8, SHEET 1)