

CURVE TABLE						
CURVE #	DELTA	RADIUS	LENGTH	TANGENT	CHORD	CHORD BEARING
C1	3°54'40"	145.00'	9.90'	4.95'	9.90'	S74°55'28"E
C2	16°53'52"	145.00'	42.76'	21.54'	42.61'	S64°31'12"E
C3	16°22'54"	145.00'	41.46'	20.87'	41.32'	S47°52'49"E
C4	14°17'22"	145.00'	36.16'	18.18'	36.07'	S32°32'41"E
C5	20°27'08"	145.00'	51.76'	26.16'	51.48'	N15°10'26"W
C6	3°34'06"	145.00'	9.03'	4.52'	9.03'	N3°09'49"W
C7	6°49'03"	50.00'	5.95'	2.98'	5.95'	N2°01'46"E
C8	41°42'17"	50.00'	36.39'	19.05'	35.60'	N26°17'26"E
C9	118°44'09"	50.00'	103.62'	84.44'	86.05'	S73°29'21"E
C10	63°55'24"	50.00'	55.78'	31.20'	52.94'	S17°50'25"W
C11	8°49'07"	50.00'	7.70'	3.86'	7.69'	S54°12'41"W
C12	60°00'01"	50.00'	52.36'	28.87'	50.00'	S28°37'14"W
C13	2°21'46"	95.00'	3.92'	1.96'	3.92'	S2°33'39"E
C14	32°12'58"	95.00'	53.42'	27.43'	52.72'	S19°51'01"E
C15	40°55'18"	95.00'	67.85'	35.44'	66.42'	S56°25'09"E

RIGHT-OF-WAY CURVE TABLE						
CURVE #	DELTA	RADIUS	LENGTH	TANGENT	CHORD	CHORD BEARING
RW 25	75°30'02"	145.00'	191.07'	112.27'	177.54'	N39°07'47"W
RW 26	240°00'00"	50.00'	209.44'	86.60'	86.60'	S61°22'46"E
RW 27	60°00'01"	50.00'	52.36'	28.87'	50.00'	S28°37'14"W
RW 28	75°30'00"	95.00'	116.32'	73.56'	125.18'	S39°07'47"E

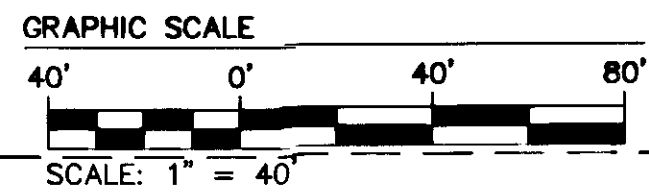
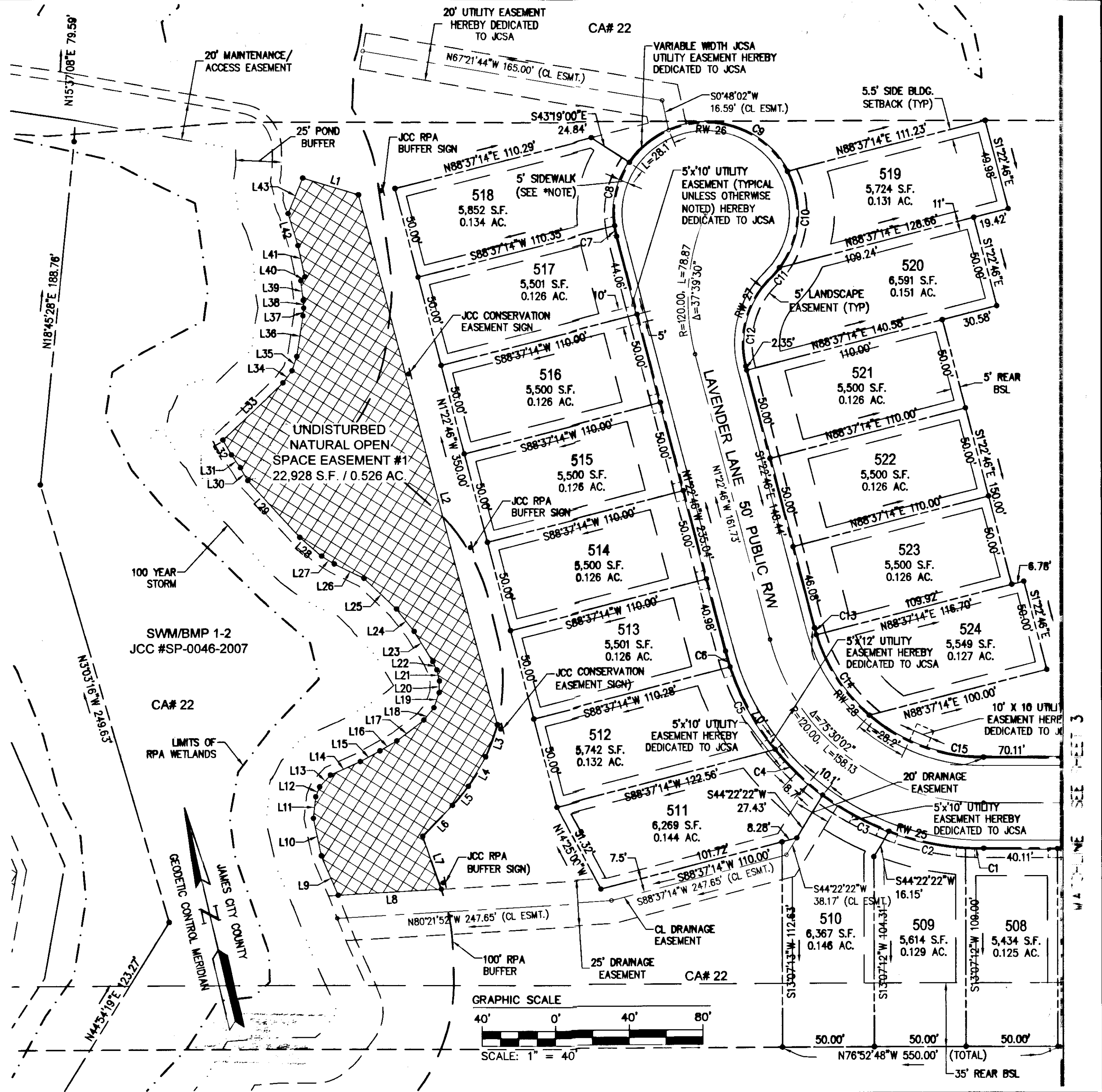
LINE TABLE		
LINE	BEARING	LENGTH
L1	S80°09'48"E	31.67'
L2	S1°22'46"E	299.64'
L3	S32°48'13"W	18.80'
L4	S43°33'04"W	18.66'
L5	S52°48'26"W	13.61'
L6	S56°42'34"W	23.54'
L7	S6°01'42"E	30.55'
L8	N80°21'52"W	56.09'
L9	N9°43'29"W	23.52'
L10	N1°21'43"E	20.86'
L11	N19°24'07"E	11.91'
L12	N34°45'40"E	5.83'
L13	N55°08'34"E	8.69'
L14	N78°40'35"E	17.88'
L15	N74°05'55"E	12.19'

LINE TABLE		
LINE	BEARING	LENGTH
L16	N72°20'00"E	10.74'
L17	N65°11'38"E	18.56'
L18	N52°12'50"E	8.76'
L19	N32°01'44"E	8.76'
L20	N14°42'12"E	6.30'
L21	N0°14'14"E	6.30'
L22	N12°42'53"W	4.98'
L23	N18°17'17"W	19.41'
L24	N24°50'24"W	15.49'
L25	N33°23'28"W	24.38'
L26	N50°50'23"W	17.93'
L27	N44°43'44"W	8.04'
L28	N36°07'40"W	15.71'
L29	N29°10'19"W	42.08'
L30	N16°16'30"W	8.12'

LINE TABLE		
LINE	BEARING	LENGTH
L31	N21°13'32"W	8.56'
L33	N59°29'06"E	45.34'
L34	N50°04'59"E	8.22'
L35	N31°09'02"E	8.22'
L36	N21°52'10"E	22.56'
L37	N18°37'20"E	4.27'
L38	N8°49'29"E	4.27'
L39	N6°13'43"E	10.81'
L40	N59°23'47"E	3.11'
L41	N0°48'57"E	17.53'
L42	N3°53'48"W	18.27'
L43	N35°16'23"E	21.03'

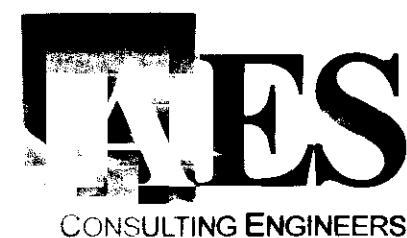
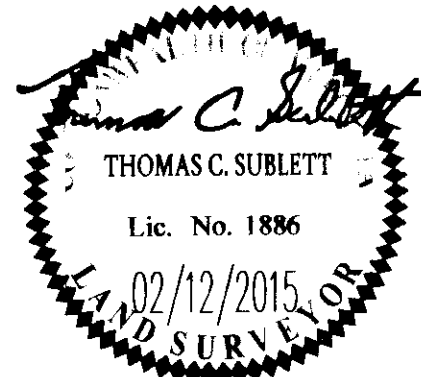
**NOTE:**  
ALL LOTS TO CONTAIN A 5' PERIMETER DRAINAGE EASEMENT TO BE DEDICATED TO THE HOMEOWNERS ASSOCIATION. THESE EASEMENTS ARE TO PROVIDE RELIEF OF LOT TO LOT DRAINAGE.

**\*NOTE:**  
IN THE AREAS WHERE THE 5' CONCRETE SIDEWALK IS NOT WITHIN THE RIGHT OF WAY THERE SHALL BE A 1' PEDESTRIAN ACCESS EASEMENT. THE SIDEWALKS ARE TO BE MAINTAINED BY THE WHITE HALL HOMEOWNER'S ASSOCIATION.



1	2/12/15	REVISED PER COUNTY COMMENTS DATED 2-8-2016	RMS
Rev.	Date	Description	Revised By

City of Williamsburg & County of James City  
Circuit Court: This PLAT was recorded on  
March 11, 2015  
at 9:48 AM/PM, PG PG  
Document # 15004500  
BETSY B. WOOLRIDGE, CLERK  
*Army Stealy*, Dep. Clerk



5248 Old Towne Road, Suite 1  
Williamsburg, Virginia 23188  
Phone: (757) 253-0040  
Fax: (757) 220-8994  
www.aesva.com

**PLAT OF SUBDIVISION**  
**WHITE HALL**  
**SECTION 5, LOTS 500-540 & CA#22**  
**JCC CASE NO. S-0053-2013**  
STONEHOUSE DISTRICT      JAMES CITY COUNTY      VIRGINIA

Project Contacts:	TCS/TRS
Project Number:	9848-26A
Scale:	Date: 11/10/2014
Sheet Number:	4 OF 4