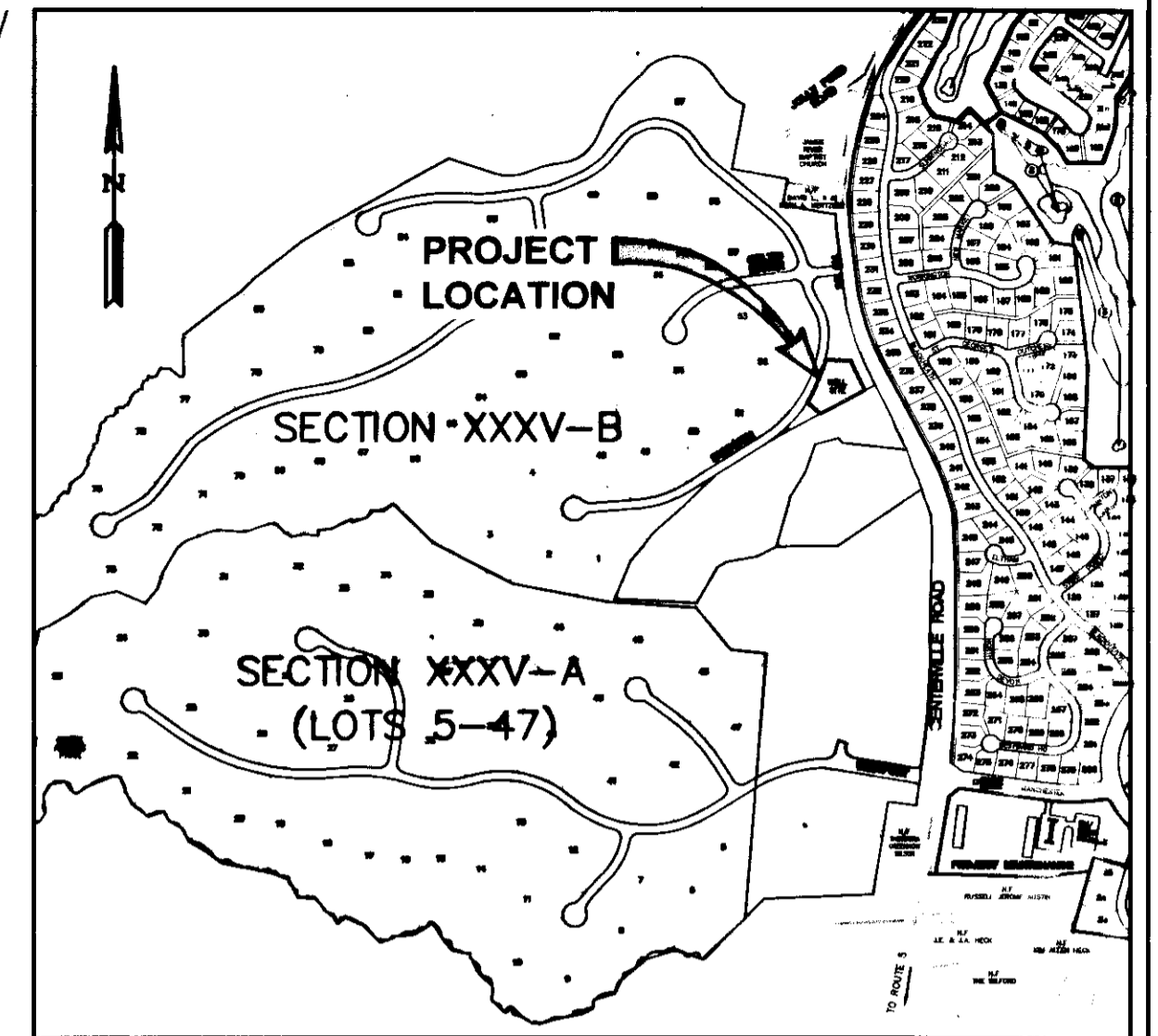
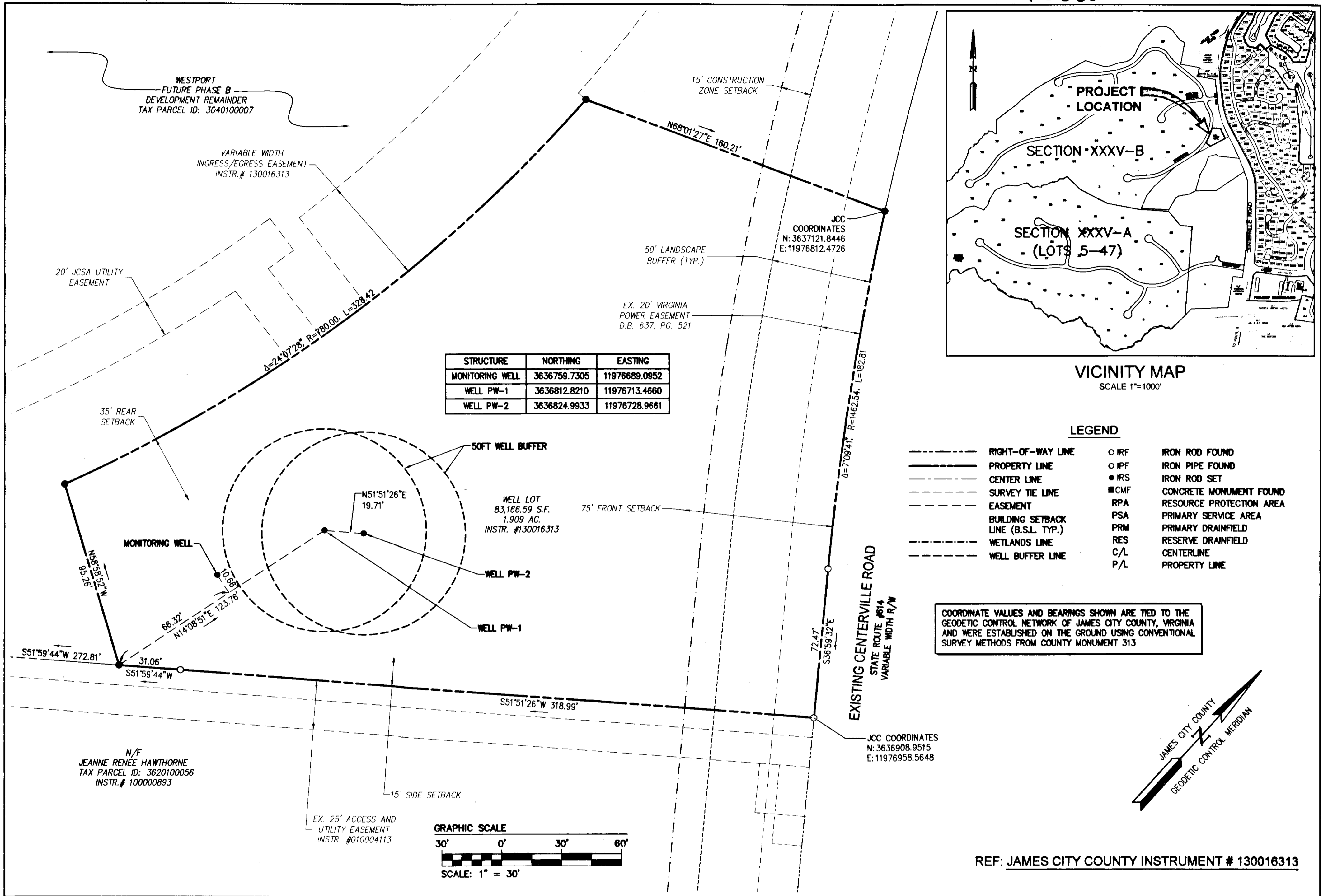


150002611

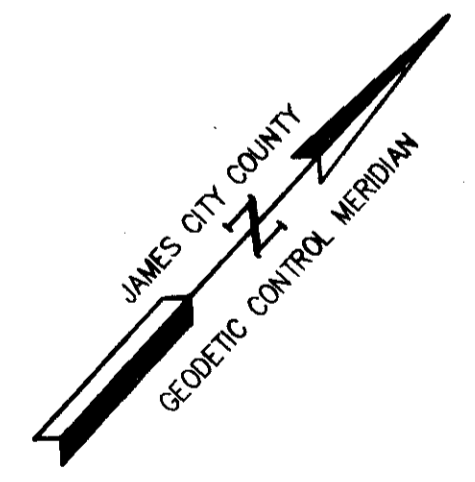


VICINITY MAP
SCALE 1"=1000'

LEGEND

- RIGHT-OF-WAY LINE
- PROPERTY LINE
- CENTER LINE
- SURVEY TIE LINE
- EASEMENT
- BUILDING SETBACK LINE (B.S.L. TYP.)
- WETLANDS LINE
- WELL BUFFER LINE
- IRF
- IPF
- IRS
- CMF
- RPA
- PSA
- PRM
- RES
- C/L
- P/L
- IRON ROD FOUND
- IRON PIPE FOUND
- IRON ROD SET
- CONCRETE MONUMENT FOUND
- RESOURCE PROTECTION AREA
- PRIMARY SERVICE AREA
- PRIMARY DRAINFIELD
- RESERVE DRAINFIELD
- CENTERLINE
- PROPERTY LINE

COORDINATE VALUES AND BEARINGS SHOWN ARE TIED TO THE GEODETIC CONTROL NETWORK OF JAMES CITY COUNTY, VIRGINIA AND WERE ESTABLISHED ON THE GROUND USING CONVENTIONAL SURVEY METHODS FROM COUNTY MONUMENT 313



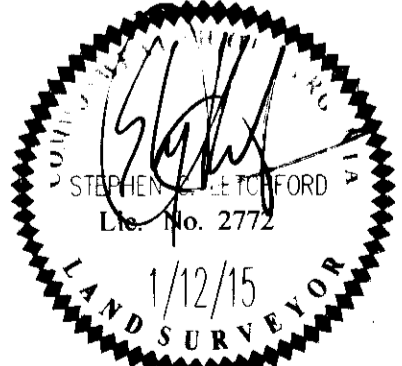
REF: JAMES CITY COUNTY INSTRUMENT # 130016313

S:\UOB\SW10145\00-Section 35\Survey\Plans\Plats\W10145-Well Location Plat.dwg, 2/12/2015 1:33:03 PM

City of Williamsburg & County of James City
Circuit Court: This PLAT was recorded on
February 13, 2015

at 8:47 AM/PM, PB _____ PG _____
Document # 150002611
BETSY B. WOOLRIDGE, CLERK
amy stull, Dep. Clerk

Rev	Date	Description	Revised By



INES
CONSULTING ENGINEERS
5248 Olde Towne Road, Suite 1
Williamsburg, Virginia 23188
Phone: (757) 253-0040
Fax: (757) 220-8994
www.inesva.com

Hampton Roads | Central Virginia | Middle Peninsula

PLAT OF CORRECTION
SHOWING WELL LOCATIONS AND RELATED BUFFERS
BEING A PORTION OF
WESTPORT
SECTION 35
AT FORD'S COLONY
POWHATAN DISTRICT JAMES CITY COUNTY VIRGINIA

Project Contacts: JAG
Project Number: W10145
Scale: 1"=30' Date: 1/12/15
Sheet Number
1 OF 1