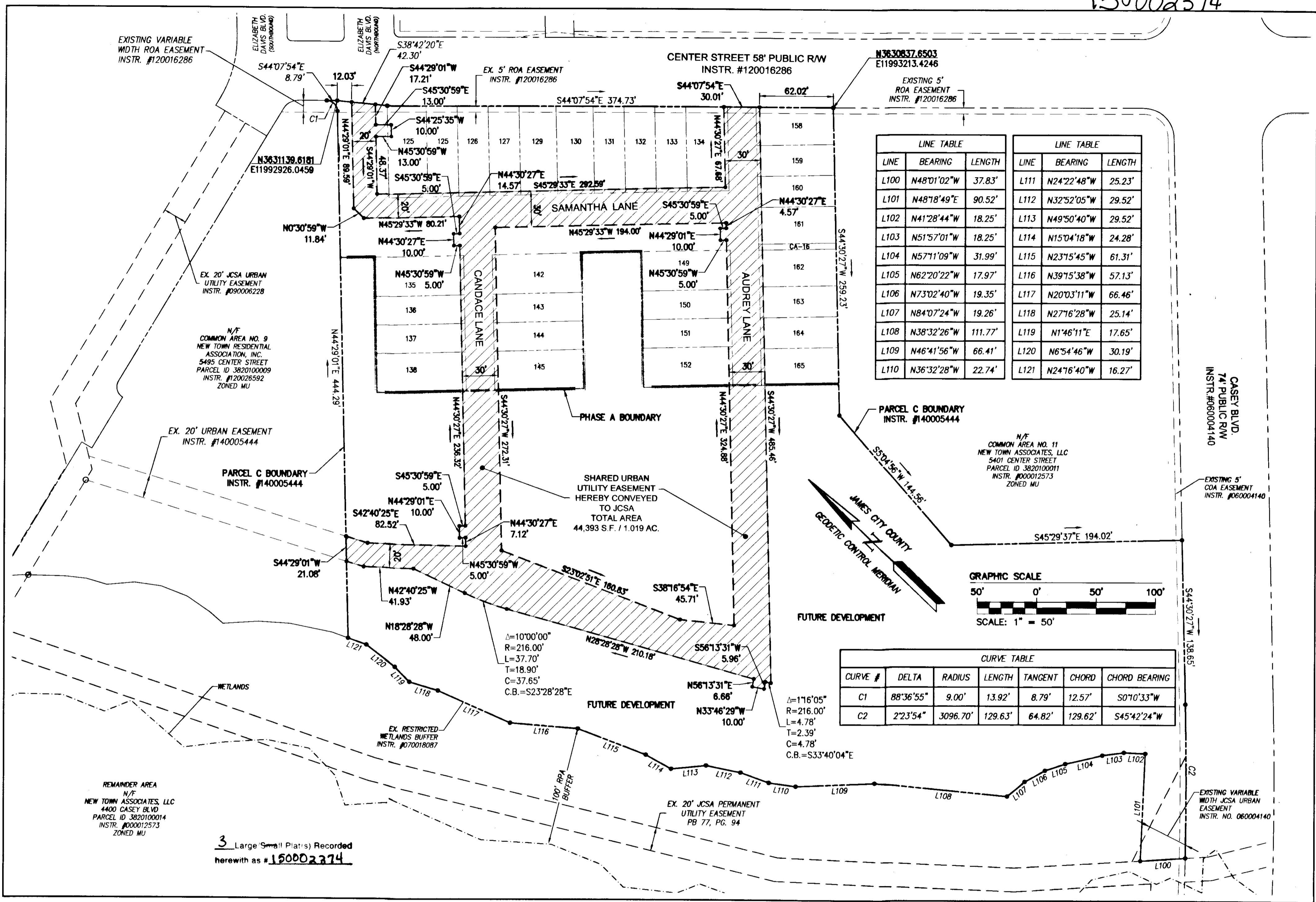
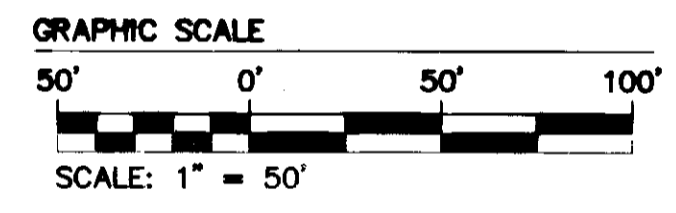


150002374



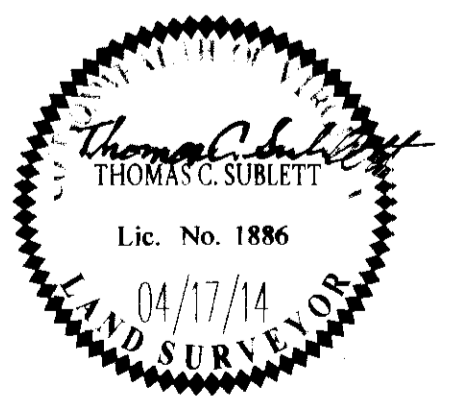
LINE TABLE			LINE TABLE		
LINE	BEARING	LENGTH	LINE	BEARING	LENGTH
L100	N48°01'02"W	37.83'	L111	N24°22'48"W	25.23'
L101	N48°18'49"E	90.52'	L112	N32°52'05"W	29.52'
L102	N41°28'44"W	18.25'	L113	N49°50'40"W	29.52'
L103	N51°57'01"W	18.25'	L114	N15°04'18"W	24.28'
L104	N57°11'09"W	31.99'	L115	N23°15'45"W	61.31'
L105	N62°20'22"W	17.97'	L116	N39°15'38"W	57.13'
L106	N73°02'40"W	19.35'	L117	N20°03'11"W	66.46'
L107	N84°07'24"W	19.26'	L118	N27°16'28"W	25.14'
L108	N38°32'26"W	111.77'	L119	N1°46'11"E	17.65'
L109	N46°41'56"W	66.41'	L120	N6°54'46"W	30.19'
L110	N36°32'28"W	22.74'	L121	N24°16'40"W	16.27'

CURVE TABLE						
CURVE #	DELTA	RADIUS	LENGTH	TANGENT	CHORD	CHORD BEARING
C1	88°36'55"	9.00'	13.92'	8.79'	12.57'	S07°03'33"W
C2	2°23'54"	3096.70'	129.63'	64.82'	129.62'	S45°42'24"W



3 Large (Small Plats) Recorded herewith as # 150002374

City of Williamsburg & County of James City		Circuit Court: This PLAT was recorded on	
at 9:18 AM/PM, PG. 1		2-10-2015	
Document # 150002374		BETSY B. WOOLRIDGE, CLERK	
1 5/09/14		JFS	



AES
CONSULTING ENGINEERS
5246 Olde Towne Road, Suite 1
Williamsburg, Virginia 23188
Phone: (757) 253-0040
Fax: (757) 220-8994
www.aesva.com

PLAT OF SUBDIVISION
SECTION 7, PARCEL C, PHASE A
NEW TOWN
LOTS 125-134, 135-138, 142-145, 149-152, 158-165
AND CA-16
OWNED BY NT DEVELOPMENT, LP
JAMESTOWN DISTRICT JAMES CITY COUNTY VIRGINIA

Project Contacts: REC/TCB
Project Number: 6632-07-06
Scale: 1"=50' Date: 4/17/2014
Sheet Number: 3 of 3