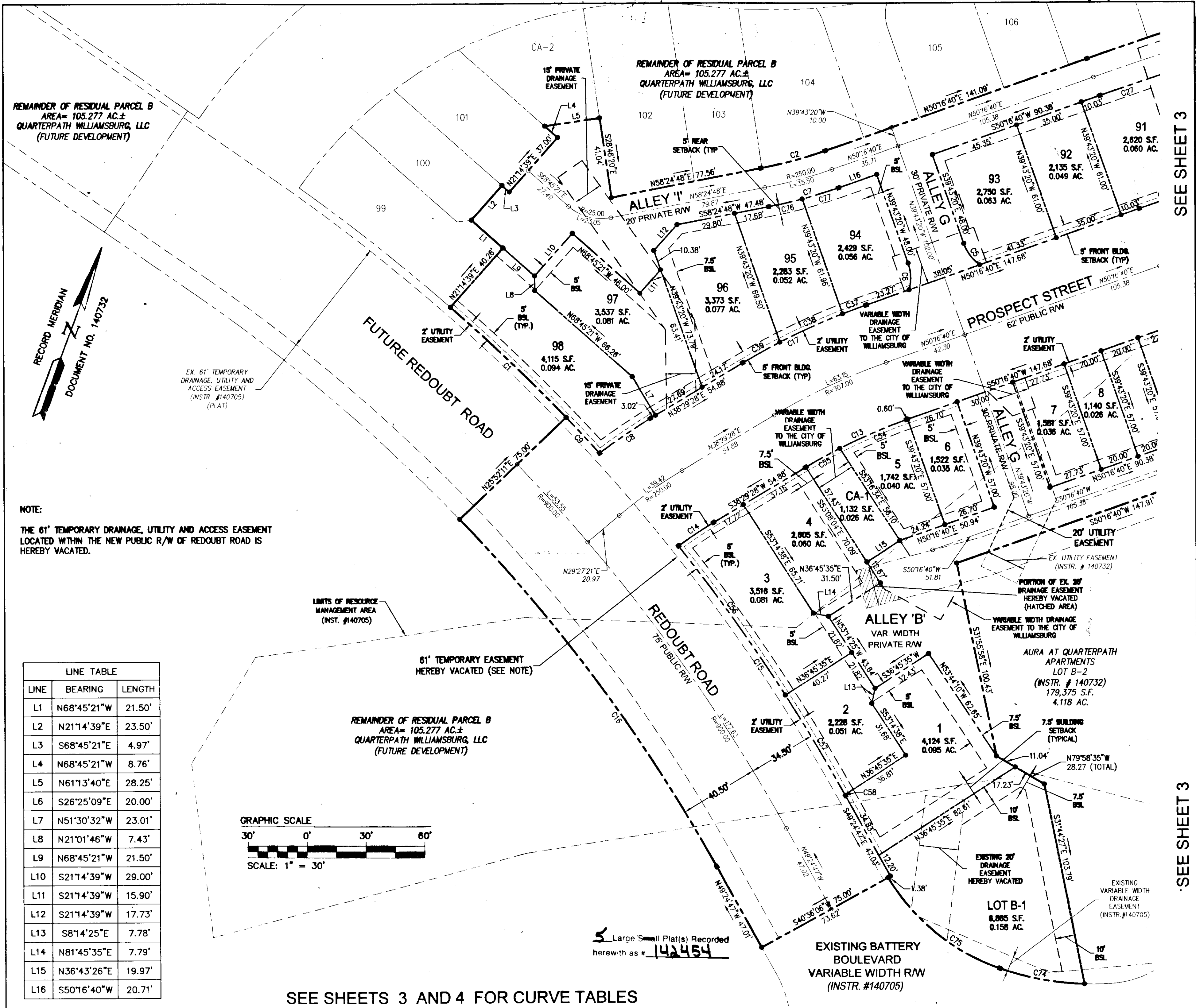
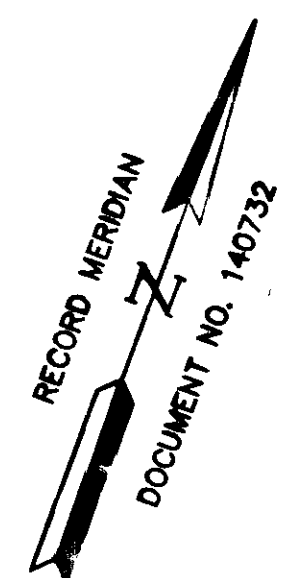


142454



REMAINDER OF RESIDUAL PARCEL B
AREA= 105.277 AC.±
QUARTERPATH WILLIAMSBURG, LLC
(FUTURE DEVELOPMENT)



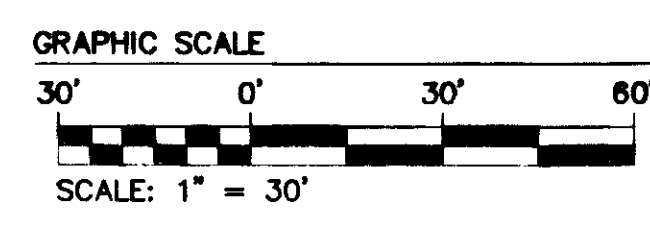
EX. 61' TEMPORARY
DRAINAGE, UTILITY AND
ACCESS EASEMENT
(INSTR. #140705)
(PLAT)

NOTE:
THE 61' TEMPORARY DRAINAGE, UTILITY AND ACCESS EASEMENT
LOCATED WITHIN THE NEW PUBLIC R/W OF REDOUBT ROAD IS
HEREBY VACATED.

LIMITS OF RESOURCE
MANAGEMENT AREA
(INST. #140705)

61' TEMPORARY EASEMENT
HEREBY VACATED (SEE NOTE)

REMAINDER OF RESIDUAL PARCEL B
AREA= 105.277 AC.±
QUARTERPATH WILLIAMSBURG, LLC
(FUTURE DEVELOPMENT)



LINE TABLE		
LINE	BEARING	LENGTH
L1	N68°45'21"W	21.50'
L2	N21°14'39"E	23.50'
L3	S68°45'21"E	4.97'
L4	N68°45'21"W	8.76'
L5	N61°13'40"E	28.25'
L6	S26°25'09"E	20.00'
L7	N51°30'32"W	23.01'
L8	N21°01'46"W	7.43'
L9	N68°45'21"W	21.50'
L10	S21°14'39"W	29.00'
L11	S21°14'39"W	15.90'
L12	S21°14'39"W	17.73'
L13	S8°14'25"E	7.78'
L14	N81°45'35"E	7.79'
L15	N36°43'26"E	19.97'
L16	S50°16'40"W	20.71'

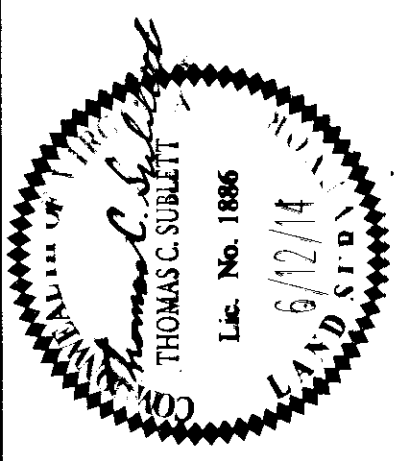
Large Small Plat(s) Recorded
herewith as # 142454

SEE SHEETS 3 AND 4 FOR CURVE TABLES

SEE SHEET 3

SEE SHEET 3

City of Williamsburg & County of James City
Circuit Court: This PLAT was recorded on
34 October 2014
at 3:31 AM PM PG
Document # 142454
BETSY B. WOOLRIDGE, CLERK
COURT CLERK



5248 Old Towne Road, Suite 1
Williamsburg, Virginia 23188
Phone: (757) 253-0040
Fax: (757) 220-8984
www.aesne.com

AES
CONSULTING ENGINEERS

Hampton Roads | Central Virginia | Middle Peninsula

PLAT OF SUBDIVISION
**VILLAGE GREEN NORTH
TOWNHOMES AT QUARTERPATH
PHASE ONE**
BEING THE PROPERTY OF
QUARTERPATH WILLIAMSBURG, LLC
VIRGINIA

Project Contacts: TCS/JFS
Project Number: W10219-01
Scale: 1"=30' Date: 6/12/14
Sheet Number
2 OF 5