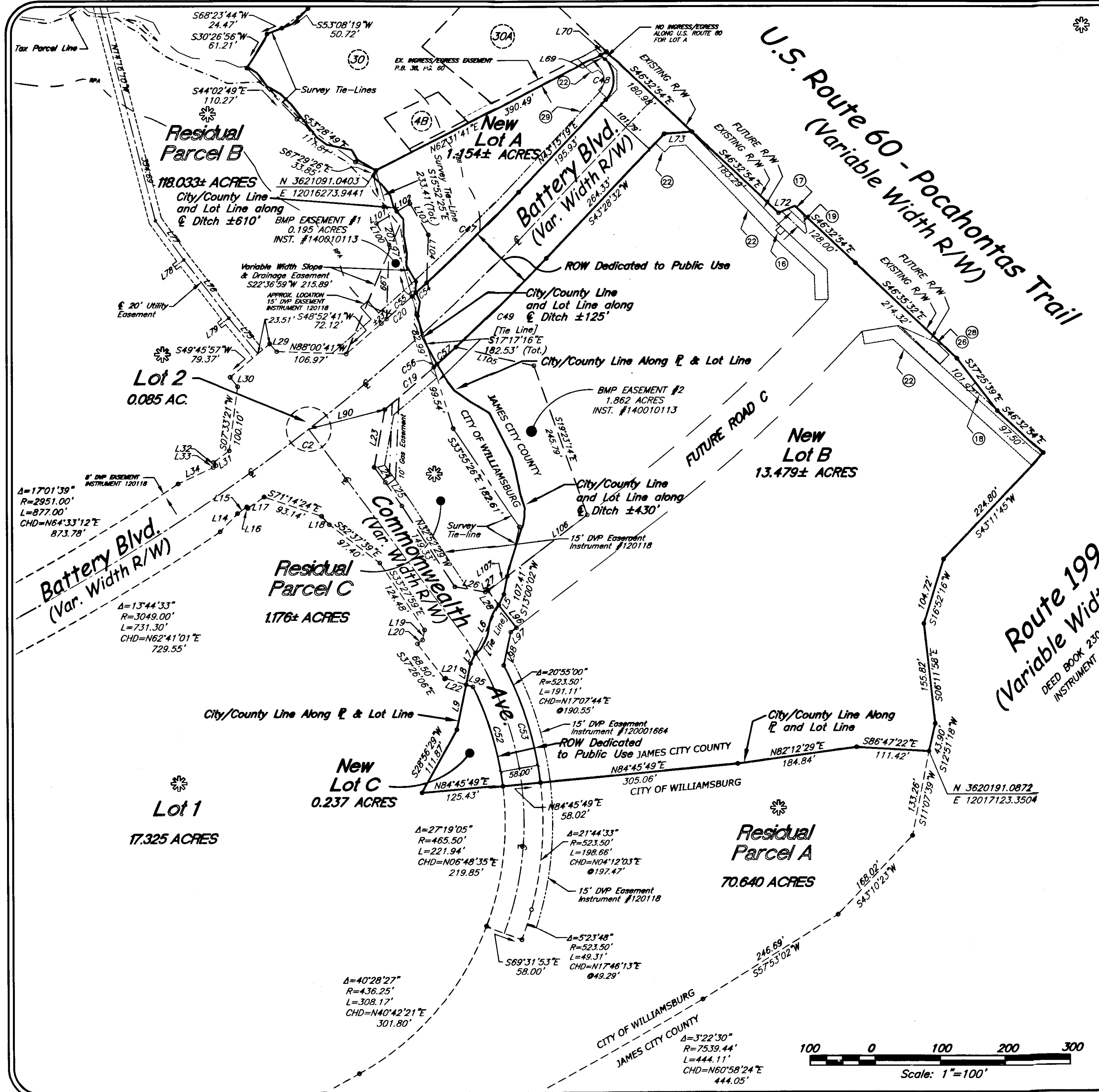


☼ - (Quarterpath at Williamsburg - City Portion)



- ☼ (30A) Southland Corporation
Deed Book 238, Page 187
Tax Parcel: 50-2-01-0-0030A
#7337 Pocahontas Trail
Zoned: B-1
- ☼ (30) Riverside Healthcare Association, Inc.
Instrument No. 050014379
Tax Parcel: 50-2-01-0-0030
#7327 Pocahontas Trail
Zoned: B-1
- ☼ (4B) Riverside Healthcare Association, Inc.
Instrument No. 050014379
Tax Parcel: 50-2-07-0-0004B
#7341 Pocahontas Trail
Zoned: B-1

- 16 10' VDOT DRAINAGE EASEMENT, DB. 134, PG. 564
- 17 10' JCSA SEWER EASEMENT, DB. 142, PG. 573
- 18 VAR. WIDTH JCSA SEWER & UTILITY EASEMENT, DB. 142, PG. 578
- 19 10' JCSA UTILITY EASEMENT, DB. 142, PG. 608
- 22 (45) (55) (62) (66) (79) (85) VAR. WIDTH VEPCO EASEMENT, INST. NO. 100024722
20' VEPCO EASEMENT, INST. NO. 100024722
- 26 VAR. WIDTH JCSA SEWER & UTILITY EASEMENT, INST. 110013555
- 28 VAR. WIDTH JCSA SEWER & UTILITY EASEMENT, INST. 110013555
- 29 20' VEPCO EASEMENT, INST. NO. 120001884



Route 199
(Variable Width R/W)
DEED BOOK 230, PAGE 632
INSTRUMENT #020-015393

City of Williamsburg & County of James City
Circuit Court: This PLAT was recorded on
December 30, 2014
at 3:12 AM, PM, PG. _____
Document # 140021471
BETSY B. WOOLRIDGE, CLERK
Amy Storey, Dep. Clerk

3 Large/6 Small Plat(s) Recorded
herewith as # 140021471

Quarterpath at Williamsburg Section 1

Roberts District, James City County, Virginia
SCALE: 1"=100' DATE: SEPTEMBER 29, 2014

Shadrach & Associates, LLC
LAND SURVEYING
430 Southlake Blvd., Suite 10-B • Richmond, Virginia 23258
Phone: (804)379-9300 • Fax: (804)379-9301

